



## **User Instruction & Installation Manual**

### **M9 & M10 Searchlight**



#### **Product Reference Number:**

**A2059 – M9 Deck Silver Finish**  
**A2060 – M9 Deck White Finish**  
**A2084 – M10 Cabin Silver Finish**  
**A2085 – M10 Cabin White Finish**  
**A3085 – M10 Cabin Black Finish**

#### **Manufacturer's details:**

Francis Searchlights Ltd  
Union Road, Bolton  
Lancashire, BL2 2HJ, UK  
Tel: +44 (0) 1204 558960  
Fax: +44 (0) 1204 558979  
<http://www.francis.co.uk>  
E-mail: [sales@francis.co.uk](mailto:sales@francis.co.uk)

#### **Distributor details:**

--

Manual Part Number: C24187  
Issue: 3      EC1990      29.11.23

# CONTENTS

- 1 - Introduction
- 2 - Safety Precautions
- 3 - Technical Information
- 4 - Unpacking and Installation Instructions
- 5 - Electrical Installation
- 6 - Operating Instructions
- 7 - Fault Finding
- 8 - Maintenance and Servicing
- 9 - General Assembly Drawing
- 10 - Spare Parts List

# 1 - Introduction

**It is imperative that this manual is read carefully and understood before installing your equipment. For your future reference please keep this manual in a safe place.**

Thank you for specifying a product from the Francis Searchlights range. All Francis products are designed to give complete customer satisfaction and are manufactured to the highest engineering standards to ensure optimum performance and service life.

The Francis Halogen range combines features proven over many years service in the most hazardous conditions in both marine and land installations.

To prolong the life and performance of your product, we recommend that you only specify Francis Searchlights spare parts. This will also ensure that any warranties on your equipment will not be invalidated. Information on spares ordering and parts is provided in this manual.

Should you ever need to contact Francis Searchlights Ltd. regarding your equipment, please always quote the Product Serial Number.

## 2 - Safety Precautions

The following instructions must be adhered to, to ensure a safe working environment and the safety of the user.

- Prevent rain, snow, condensation, and water droplets from contacting the lamp as this may cause bulb failure, and possible shattering.
- Quartz halogen lamps run with a high internal pressure more than atmospheric. Whilst the construction is inherently strong, there is a slight risk of the lamp shattering.
- Never look directly into an illuminated searchlight as this may cause severe damage to eyesight. If it is necessary to inspect a lamp whilst in operation, always wear suitable protective goggles.
- Should it be necessary to examine the lamp with the front bezel removed, always use a protective shield to ensure a safe working environment.
- Never attempt to clean the lamp when in use.
- Searchlights get hot. Never touch the unit when lit and always allow at least ten minutes for cooling down after turning off.
- Ensure the lamp has cooled sufficiently before removal. During the cooling down period avoid mechanical or thermal shock to the lamp as this may cause shattering.
- If undue force appears necessary to remove the lamp, the equipment should be inspected by a competent person, or contact the manufacturer.
- When breaking a lamp for disposal, care must be taken to ensure that the fragments are safely contained. Precautions must be taken against flying glass and other fragments. This operation should be performed outdoors or in a well-ventilated area. In ALL cases reference should be made to the lamp manufacturers instructions packed with the lamp.
- Due to the vast range of lamps available, it may appear possible that more powerful lamps can be used in the equipment for which it was designed. Even when the unit will physically accept a higher wattage lamp, this substitution is not recommended as it could be dangerous.

### 3 – Technical Information

This product has been designed to operate in accordance with the product specification. The M9 & M10 searchlights have the following features:

- Constructed from marine grade aluminium.
- Polished, electro-brightened super purity aluminium parabolic reflector.
- Stove enamel painted.
- Vertical movement +35° to -35°.
- Fixed focus.
- Toughened front glass.
- Sealing to IP65.
- Tungsten Halogen Lamps.
- Solas approved.
- Weight                      M9 – 1.7Kg              M10 – 2.2 Kg.

The searchlight also performs to the following optical data:

Volts	Watts	Range @ 1 Lux	P.B.C.P. x 1000	Div.	Lamp Life	Lamp Cap	Part Number
12v	50	405M	164	3.4	3000 Hrs	G6.35	D4051
12v	50	576M	332	3.0	50 Hrs	G6.35	D9849
12v	100	640M	409	4.0	50 Hrs	G6.35	D3018
12v	100	492M	242	4.6	2000 Hrs	G6.35	D9848
24v	100	438M	191	4.7	2000 Hrs	G6.35	D9850

In order that the searchlight operates correctly it is imperative that competent personnel are responsible for the installation, operation, and servicing of this equipment. Failure to adhere to this advice may cause premature failure or incorrect operation of the searchlight, which may damage the equipment or cause personal injury.

## 4 - Unpacking and Installation Instructions

The following instructions should be read and fully understood prior to installing the equipment to ensure that the correct procedures are followed, and all safety precautions are observed.

If the equipment has been in storage for a considerable time, it is advisable to conduct a routine maintenance check on all parts before installation.

Care should be taken when unpacking the searchlight, so as not to cause damage to the equipment or cause personal injury. A visual inspection of the equipment should be conducted to check for damage during transit or damaged lamps.

Enclosed in the packing is the flange sealing gasket. This should be retained for installation purposes.

### **Preparing the Mounting Position**

Mark out and drill 3 off holes  $\varnothing 6.4$  on a 108.0 P.C.D.

On underdeck models a central hole  $\varnothing 45.0$  will be required to accept the movement of the control handle. Make sure to fit the Base-sealing gasket, when in the desired position bolt the searchlight firmly down. On an UN-even surface, a suitable sealant maybe required to provide a weatherproof seal.

## 5 - Electrical Installation

For safety purposes, only competent personnel should perform the electrical installation. All equipment should be installed to current Electrical Regulations and Standards.

To obtain the maximum light output from the searchlight, it is essential that the full operating voltage of the lamp fitted be applied to the lampholder contacts.

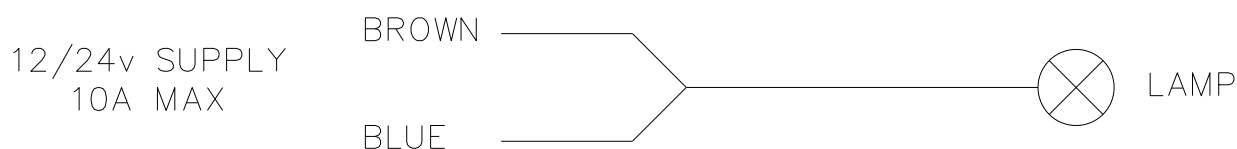
### Method of Electrical Connection

- 1) Disconnect the supply before working on the electrical system.
- 2) The searchlight must be connected to a fused electrical supply, using suitably sized cable.
- 3) If the searchlight is located a considerable distance from the supply, provision must be made in the cable size to overcome the voltage drop.

The following table should be used for indication purposes only:

Searchlight	12v 50w	12v 100w	24v 100w
Cable Size (mm <sup>2</sup> )	Distance Max	Distance Max	Distance Max
1.0	3 MTRS	1 MTR	6 MTRS

- 4) Whenever possible cable terminations should be made below deck and with approved terminal devices.
- 5) If a spare auxiliary fuse or circuit breaker is not available, one of the correct type/ratings should be fitted and connected to a positive supply. It is advisable to locate a bus bar or main connection and avoid any direct connection to the supply.
- 6) When wiring the negative supply, the direct connection to a battery or supply, or metal hull/object, should be avoided. It is advisable to use a suitable terminal block or connection.
- 7) For ease of use a single pole switch, of the appropriate rating, should be fitted in a convenient location. All cable lengths should be kept to a minimum.



## 6 - Operating Instructions

This equipment is designed for use out of doors, in free air. Never place anything on, or cover, the searchlight when in use as this may present a hazard.

### M9 Searchlight

The searchlight can be tilted  $\pm 35^\circ$  by using the rear handle mounted on the rear of the searchlight.

### M10 searchlight

The searchlight can be tilted  $\pm 35^\circ$  by pushing or pulling the underdeck handle.

**This product should not be used for any purpose other than for which it was designed. Any modifications to the product should not be undertaken without consulting the manufacturer.**

## Setting to Work

Safe service in use necessitates the strict observance of the following precautions.

- Any article fabricated from quartz or glass is inherently fragile and care should therefore be taken, always, when handling lamps.
- Eye protection must be worn when handling lamps that have been removed from their packaging materials. The protective sleeve should not be removed from the lamp for safety reasons, as there is a remote possibility of the lamp shattering violently, especially if it is subjected to mechanical shock or vibration.
- Quartz lamps should not become contaminated with oils, grease.

When fitting the lamp:

- Always isolate the equipment from the supply before inserting a lamp.
- Ensure the circuit is suitably fused.
- Ensure that the lamp is of the recommended type and rating.
- Check the lampholder is in good condition. If the contacts show any sign of corrosion the lamp holder should be replaced.
- Check that the lampholder is in a good dry condition. Never allow water to collect in the lamp fitting.

To fit the lamp:

- Loosen the two thumbscrews on the front of the searchlight.
- Remove the front bezel and glass.
- Cut open one end of the protective sleeve surrounding the lamp.
- Using the sleeve to prevent the fingers touching the lamp, position the two lamp pins in-line with the lamp holder.
- Gently push the lamp into the lampholder and discard the protective sleeve.
- Position the front bezel onto the searchlight and tighten the thumbscrews until hand tight.

**In all circumstances the lamp manufacturer's data should be referred to when dealing with lamps.**

## Testing

Upon correct installation and connection to an electrical supply, the equipment can be tested to ensure its correct performance. A competent person with some knowledge of electrical equipment must carry out this work.

Equipment required:

Multi-meter with leads.

Ammeter.

Using the equation  $P=VI$  the approximate power output of the equipment can be calculated in the following way.

- Using the multimeter take a voltage reading.
- Using the Ammeter, take an amp reading from the live cable to the lamp.
- Multiply these values together to give an approximate wattage.

For example:

Using a 24v 100w Tungsten Halogen lamp.

Voltage reading: 24v.

Amps reading: 4 amps.

Therefore:

$$\text{Wattage} = 24 \times 4 = 96 \text{ watts.}$$

## 7- Fault Finding

If a fault occurs the following procedures should be adopted. Any work to be carried out should be conducted by a competent person. A multimeter should be used for fault finding purposes.

### **Fault**

Lamp fails to light.

### **Causes**

- 1) Power not supplied.
- 2) Fuse blown.
- 3) Failed Lamp

### **Remedy**

- 1) Check voltage at supply / battery. If necessary, recharge battery. If supply is not present fault is at customer's supply. If power is present, see remedy 2.
- 2) Check fuse for visual failure. If non noticeable check fuse for continuity. If fuse found to be faulty, replace with new part. If found to be working correctly see remedy 3.
- 3) Firstly, check supply. If supply present, disconnect unit from power supply before removing lamp. If noticeable damage to filament is present, the lamp will have failed. The lamp can also be checked using a multimeter for continuity of the filament. Replace new lamp following all precautions mentioned previously and lamp manufacturers' instructions.

## 8 - Maintenance and Servicing

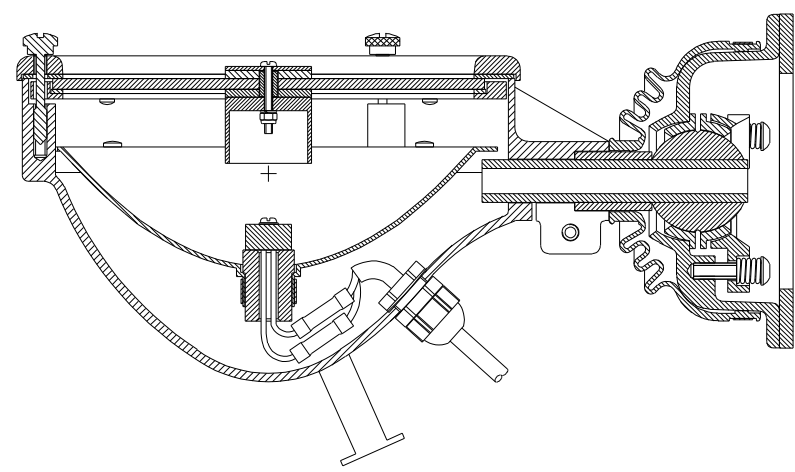
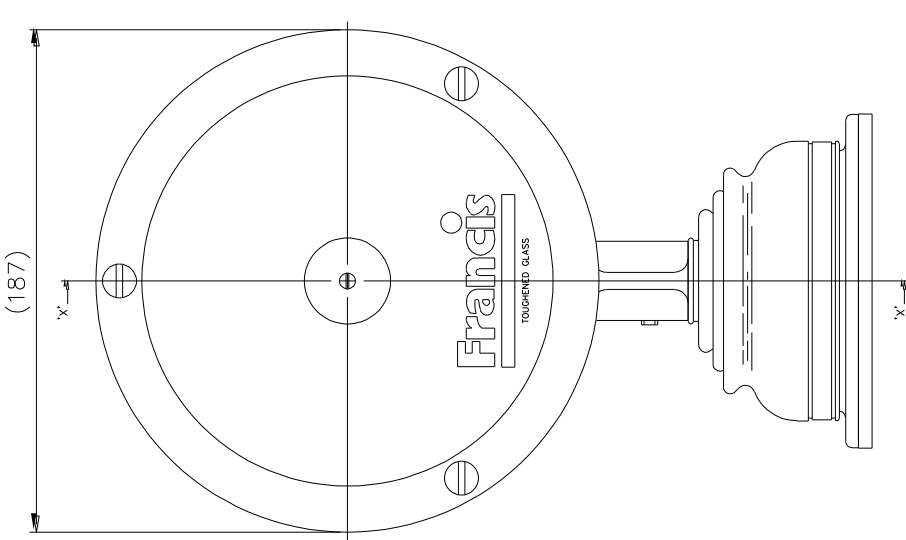
To prolong the service life and performance of your searchlight, the following maintenance guidelines are recommended:

- Maintenance checks should be conducted before every voyage or at least every three months.
- Before checking, disconnect the equipment from the supply.
- Visually inspect the condition of the equipment.
- Any major or minor structural damage should be rectified immediately.
- After inspection it may be necessary to clean the inside of the searchlight. The following procedure should be adhered to:
  - Remove the front bezel.
  - Clean the front glass inside and out using a proprietary glass cleaner.
  - Clean the reflector if required.
  - Ensure that the lampholder is free from corrosion or other damage.
- It is advisable to check all seals and gaskets for signs of degradation. Renew if necessary.
- Upon completing all maintenance requirements, the searchlight should be tested for full working order (approximately 20 minutes).

**If in any doubt as to the correct servicing procedures to adopt, please contact your distributor/agent or the manufacturer who will be able to advise the best course of action for your product.**

## 9 - General Assembly Drawing

<b>Drawing Number</b>	<b>Description</b>
A2060	M9 General Assembly
A2085	M10 General Assembly



SECTION ON 'XX'

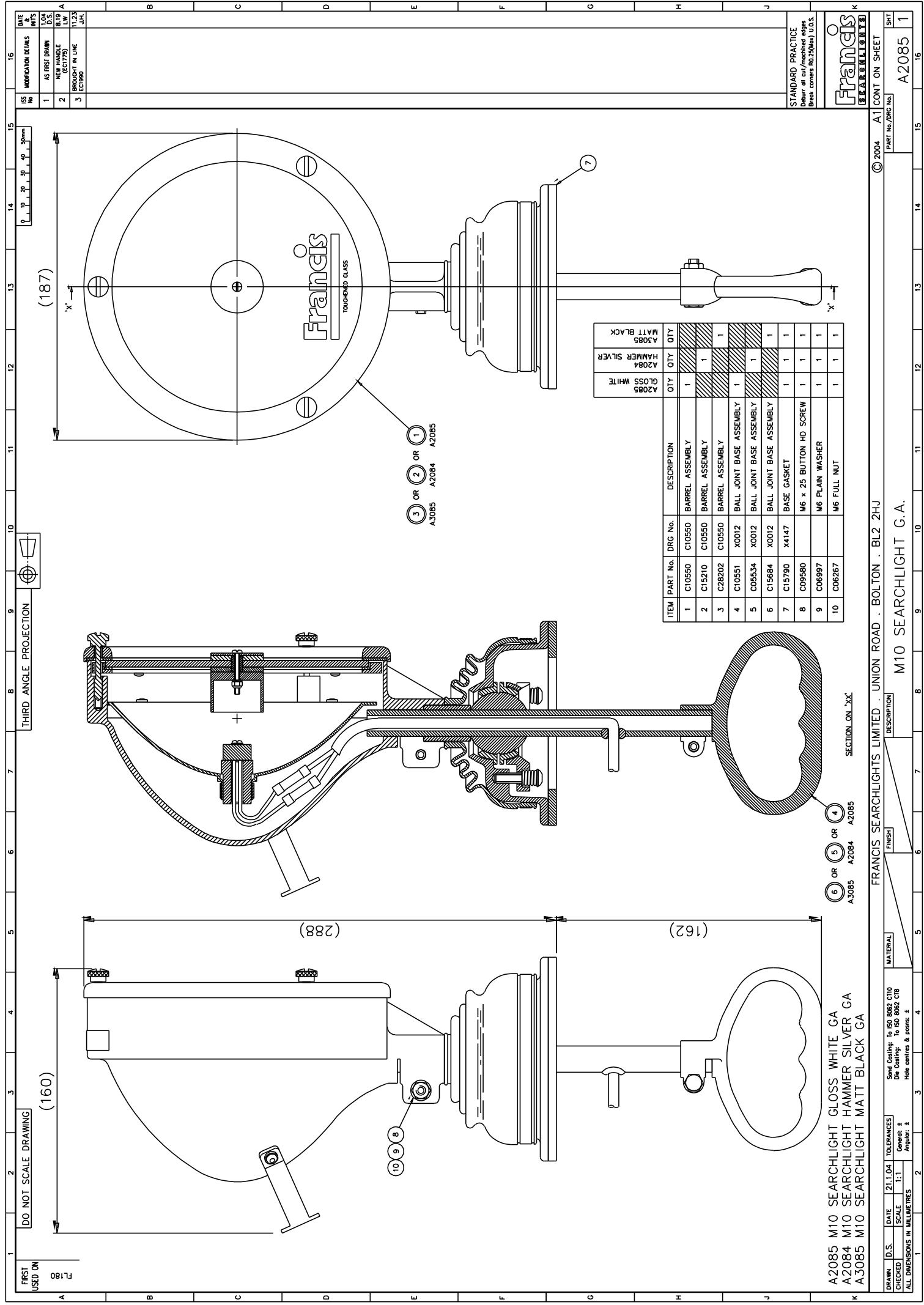
ITEM	PART No.	DRG No.	DESCRIPTION	QTY	QTY
1	C15209	C15209	BARREL ASSEMBLY	1	1
2	C15317	C15209	BARREL ASSEMBLY		
3	C10559	X0012	BALL JOINT BASE ASSEMBLY	1	1
4	C05528	X0012	BALL JOINT BASE ASSEMBLY	1	1
5	C15790	X4147	BASE GASKET	1	1
6	C09580		M6 x 25 HEX HD SCREW	1	1
7	C06997		M6 PLAIN WASHER	1	1
8	C06267		M6 FULL NUT	1	1

[illegible]

Francis

A2060 M9 SEARCHLIGHT GLOSS WHITE G.A.  
A2059 M9 SEARCHLIGHT HAMMER SILVER G.A.

FRANCIS SEARCHLIGHTS LIMITED . UNION ROAD . BOLTON . BL2 2HU									
DRAWN		D.S.	DATE	26.1.04	TOLERANCES		Sand Castings: To ISO 8062 C110 Die Castings: To ISO 8062 C18 Hole centres & posns: ± Angles: ±		
CHECKED		SCALE		1:1		GENERATOR			
ALL DIMENSIONS IN MILLIMETRES									
1		2		3		4		5	
6		7		8		9		10	
11		12		13		14		15	
16		17		18		19		20	
21		22		23		24		25	
26		27		28		29		30	
31		32		33		34		35	
36		37		38		39		40	
41		42		43		44		45	
46		47		48		49		50	
51		52		53		54		55	
56		57		58		59		60	
61		62		63		64		65	
66		67		68		69		70	
71		72		73		74		75	
76		77		78		79		80	
81		82		83		84		85	
86		87		88		89		90	
91		92		93		94		95	
96		97		98		99		100	
101		102		103		104		105	
106		107		108		109		110	
111		112		113		114		115	
116		117		118		119		120	
121		122		123		124		125	
126		127		128		129		130	
131		132		133		134		135	
136		137		138		139		140	
141		142		143		144		145	
146		147		148		149		150	
151		152		153		154		155	
156		157		158		159		160	
161		162		163		164		165	
166		167		168		169		170	
171		172		173		174		175	
176		177		178		179		180	
181		182		183		184		185	
186		187		188		189		190	
191		192		193		194		195	
196		197		198		199		200	
201		202		203		204		205	
206		207		208		209		210	
211		212		213		214		215	
216		217		218		219		220	
221		222		223		224		225	
226		227		228		229		230	
231		232		233		234		235	
236		237		238		239		240	
241		242		243		244		245	
246		247		248		249		250	
251		252		253		254		255	
256		257		258		259		260	
261		262		263		264		265	
266		267		268		269		270	
271		272		273		274		275	
276		277		278		279		280	
281		282		283		284		285	
286		287		288		289		290	
291		292		293		294		295	
296		297		298		299		300	
301		302		303		304		305	
306		307		308		309		310	
311		312		313		314		315	
316		317		318		319		320	
321		322		323		324		325	
326		327		328		329		330	
331		332		333		334		335	
336		337		338		339		340	
341		342		343		344		345	
346		347		348		349		350	
351		352		353		354		355	
356		357		358		359		360	
361		362		363		364		365	
366		367		368		369		370	
371		372		373		374		375	
376		377		378		379		380	
381		382		383		384		385	
386		387		388		389		390	
391		392		393		394		395	
396		397		398		399		400	
401		402		403		404		405	
406		407		408		409		410	
411		412		413		414		415	
416		417		418		419		420	
421		422		423		424		425	
426		427		428		429		430	
431		432		433		434		435	
436		437		438		439		440	
441		442		443		444		445	
446		447		448		449		450	
451		452		453		454		455	
456		457		458		459		460	
461		462		463		464		465	
466		467		468		469		470	
471		472		473		474		475	
476		477		478		479		480	
481		482		483		484		485	
486		487		488		489		490	
491		492		493		494		495	
496		497		498		499		500	
501		502		503		504		505	
506		507		508		509		510	
511		512		513		514		515	
516		517		518		519		520	
521		522		523		524		525	
526		527		528		529		530	
531		532		533		534		535	
536		537		538		539		540	
541		542		543		544		545	
546		547		548		549		550	
551		552		553		554		555	
556		557		558		559		560	
561		562		563		564		565	
566		567		568		569		570	
571		572		573		574		575	
576		577		578		579		580	
581		582		583		584		585	
586		587		588		589		590	
591		592		593		594		595	
596		597		598		599		600	
601		602		603		604		605	
606		607		608		609		610	
611		612		613		614		615	
616		617		618		619		620	
621		622		623		624		625	
626		627		628		629		630	
631		632		633		634		635	
636		637		638		639		640	
641		642		643		644		645	
646		647		648		649		650	
651		652		653		654		655	
656		657		658		659		660	
661		662		663		664		665	
666		667		668		669		670	
671		672		673		674		675	
676		677		678		679		680	
681		682		683		684		685	
686		687		688		689		690	
691		692		693		694		695	
696		697		698		699		700	
701		702		703		704		705	
706		707		708		709		710	
711		712		713		714		715	
716		717		718		719		720	
721		722		723		724		725	
726		727		728		729		730	
731		732		733		734		735	
736		737		738		739		740	
741		742		743		744		745	
746		747		748		749		750	
751		752		753		754		755	
756		757		758		759		760	
761		762		763		764		765	
766		767		768		769		770	
771		772		773		774		775	
776		777		778		779		780	
781		782		783		784		785	
786		787		788		789		790	
791		792		793		794		795	
796		797		798		799		800	
801		802		803		804		805	
806		807		808		809		810	
811		812		813		814		815	
816		817		818		819		820	
821		822		823		824		825	
826		827		828		829		830	
831		832		833		834		835	
836		837		838		839		840	
841		842		843		844		845	
846		847		848		849		850	
851		852		853		854		855	
856		857		858		859		860	
861		862		863		864		865	
866		867		868		869		870	
871		872		873		874		875	
876		877		878		879		880	
881		882		883		884		885	
886		887		888		889		890	
891		892		893		894		895	
896		897		898		899		900	
901		902		903		904		905	
906		907		908		909		910	
911		912		913		914		915	
916		917		918		919		920	
921		922		923		924		925	
926		927		928		929		930	
931		932		933		934		935	
936		937		938		939		940	
941		942		943		944		945	
946		947		948		949		950	
951		952		953		954		955	
956		957		958		959		960	
961		962		963		964		965	
966		967		968		969		970	
971		972		973		974		975	
976		977		978		979		980	
981		982		983		984		985	
986		987		988		989		990	
991		992		993		994		995	
996		997		998		999		1000	
1001		1002		1003		1004		1005	
1006		1007		1008		1009		1010	
1011		1012		1013		1014		1015	
1016		1017		1018		1019		1020	
1021		1022		1023		1024		1025	
1026		1027		1028		1029		1030	
1031		1032		1033		1034		1035	
1036		1037		1038					



FIRST USED ON  
FL160

DO NOT SCALE DRAWING

THIRD ANGLE PROJECTION

REV	DATE	DESCRIPTION
1	16	AS FIRST DRAWN
2	15	NEW HANDLE
3	14	REWORK IN LINE

REV	DATE	DESCRIPTION
1	16	AS FIRST DRAWN
2	15	NEW HANDLE
3	14	REWORK IN LINE

STANDARD PRACTICE  
Refer to callout 1 for details  
Drawn to scale 1:1

Francis  
SEARCHLIGHTS

© 2004 A1 CONT ON SHEET  
PART No./FIG No.  
A2085 1

FRANCIS SEARCHLIGHTS LIMITED · UNION ROAD · BOLTON · BL2 2HJ

M10 SEARCHLIGHT G.A.

ITEM	PART No.	DRG No.	DESCRIPTION	QTY	QTY
1	C10550	C10550	BARREL ASSEMBLY	1	1
2	C15210	C10550	BARREL ASSEMBLY	1	1
3	C28202	C10550	BARREL ASSEMBLY	1	1
4	C10551	X0012	BALL JOINT BASE ASSEMBLY	1	1
5	C05534	X0012	BALL JOINT BASE ASSEMBLY	1	1
6	C15684	X0012	BALL JOINT BASE ASSEMBLY	1	1
7	C15790	X4147	BASE GASKET	1	1
8	C09580		M6 x 25 BUTTON HD SCREW	1	1
9	C06997		M6 PLAIN WASHER	1	1
10	C06267		M6 FULL NUT	1	1

DRAWN	D.S.	DATE	21.1.04	TOLERANCES
CHECKED	SCALE	1:1	1:1	
ALL DIMENSIONS IN MILLIMETRES				
				2
				3
				4
				5
				MATERIAL
				Sand Coating: To ISO 8062 C10
				Oil Coating: To ISO 8062 C18
				Hole centres & posses: ±

FINISH	MATERIAL	DESCRIPTION
A2085	GLASS	SEARCHLIGHT GLASS
A2084	STEEL	SEARCHLIGHT BODY
A3085	STEEL	SEARCHLIGHT HANDLE

## 10 – Spare Parts List

The following spare parts can be ordered directly from the manufacturer:

<b>Part Number</b>	<b>Description</b>
C15790-00	Base Gasket
C01865-00	Reflector
C10739-00	Lampholder
C10552-00	Front Glass
C15557-00	Rubber Bellows
C15920-00	Bellows Locking Band
C02193-00	Base Spring
C17104-01	Gasket Seal Kit

To prolong the life and performance of your product, we recommend that you only specify Francis Searchlights spare parts. This will ensure that any warranties on your equipment will not be invalidated.

When ordering spare parts please contact the Sales Department at Francis Searchlights Limited. Please always quote searchlight model and serial number. This will enable a fast response to your spares' requirements.