



User Instruction & Installation Manual

L230 LED 90-Watt Searchlight



Product Reference Number:

A6138 – 240v DECK	A6144 – 24v DECK
A6161 – 240v CABIN	A6162 – 24v CABIN
A6163 – 240v DECK PEDESTAL	A6164 – 24v DECK PEDESTAL
A6165 – 240v CABIN PEDESTAL	A6166 – 24v CABIN PEDESTAL

Manufacturer's details:

Francis Searchlights Ltd
Union Road, Bolton
Lancashire, BL2 2HJ, UK
Tel: +44 (0) 1204 558960
Fax: +44 (0) 1204 558979
<http://www.francis.co.uk>
E-mail: sales@francis.co.uk

Distributor details:

A large, empty rectangular box with a green border, intended for the distributor's details.

Manual Part Number: C27703

Issue: 4 26.3.24

CONTENTS

- 1 - Introduction
- 2 - Safety Precautions
- 3 - Technical Information
- 4 - Unpacking and Installation Instructions
- 5 - Electrical Installation
- 6 - Operating Instructions
- 7 - Fault Finding
- 8 - Maintenance and Servicing
- 9 - Wiring Diagrams & General Assemblies
- 10 - Spare Parts List

1 - Introduction

It is imperative that this manual is read carefully and understood before installing your equipment. For your future reference please keep this manual in a safe place.

Thank you for specifying a product from the Francis Searchlights range. All Francis products are designed to give complete customer satisfaction and are manufactured to the highest engineering standards to ensure optimum performance and service life.

The Francis LED range combines features proven over many years service in the most hazardous conditions in both marine and land installations.

To prolong the life and performance of your product, we recommend that you only specify Francis Searchlights spare parts. This will also ensure that any warranties on your equipment will not be invalidated. Information on spares ordering and parts is provided in this manual.

Should you ever need to contact Francis Searchlights Ltd. regarding your equipment, please always quote the Product Serial Number.

2 - Safety Precautions

The following instructions must be adhered to, to ensure a safe working environment and the safety of the user.

Note: When unpacking or manoeuvring the searchlight into its fixing position, suitable lifting points must be used to prevent damage to the equipment or personal injury.

- The high luminance of the LED can cause severe damage to the eye if viewed directly. ALWAYS wear suitable protective goggles when viewing the LED.
- Searchlights get hot. Never touch the unit when lit and always allow 15 to 20 minutes for cooling down after turning the searchlight off.
- Never place anything on or cover the searchlight when in use.
- Ensure the LED has cooled sufficiently before removal.
- Due to the vast range of LED modules available it may appear possible that more powerful LED's can be used in the equipment than for which it was designed. Even when the unit will physically accept a higher wattage LED, this substitution is not recommended and is dangerous. This action will also void any warranties on the equipment.

3 – Technical Information

This product has been designed to operate in accordance with the product specification. The L230 LED 90w searchlight has the following features:

- All marine grade materials and fixings.
- Powder coated finish.
- Pan rotation 450°.
- Tilt movement $\pm 40^\circ$ (Deck & Deck Pedestal, $+30^\circ$ to -25° (Cabin & Cabin Pedestal);
- Economical 40,000-hour LED life.
- Toughened super clear Optiwhite front glass.
- Aluminium precision reflector.
- Up to 9,855 Lumens.
- Colour temperature 6500K.
- Searchlight Weight 8.4Kg Deck, Pedestal 4.6Kg.
- Cabin Control Assembly 2Kg, Cabin Pedestal Assembly 4.6Kg.
- PSU Weight 2.5Kg (HV) 3Kgs (LV).
- High quality control gear 50/60 Hz 1ph.
- Sealing – IP66 Searchlight, PSU IP66.

The searchlight also performs to the following optical data:

- Supply voltage – 100/240v or 24v.
- Range – 823 metres is based on 8° divergence.
- Divergence – 8° .
- Operational temperature: -50.

In order that the searchlight operates correctly it is imperative that competent personnel are responsible for the installation, operation, and servicing of this equipment. Failure to adhere to this advice may cause premature failure or incorrect operation of the searchlight, which may damage the equipment or cause personal injury.

4 - Unpacking and Installation Instructions

The following instructions should be read and fully understood prior to installing the equipment to ensure that the correct procedures are followed, and all safety precautions are observed.

Note: If the equipment has been in storage for a considerable amount of time, it is advisable to conduct a routine maintenance check on all parts before installation.

Safety Precautions

This equipment should not be connected to an electrical supply before being installed. Installation procedures should be adhered to, to ensure a safe working environment and reduce the risk of damage or personal injury.

Fitting Instructions for Lite Range Cabin Model

Preparing the Mounting Position

Using the template provided mark out and drill the fixing holes through the deck or cabin roof. In the case of cabin control models, a centre hole is also required to allow the mechanism to pass through.

Mounting the Searchlight

For Deck Models:

Fit the 'O' ring in position and bolt the searchlight base securely down. On an uneven surface it is necessary to use a suitable sealant, such as silicone, in order to ensure a weather proofed joint.

For Cabin/Cabin Pedestal Models:



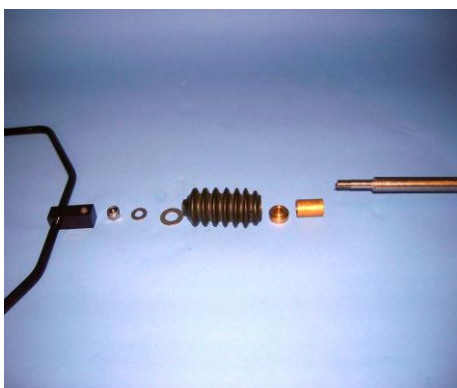
1. Remove the Base Lock Wheel.



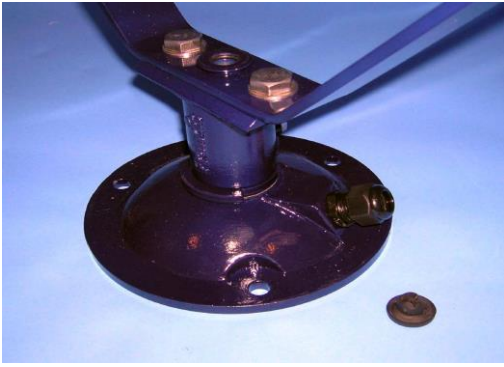
2. Replace Lock Wheel with M8 x 10 hexagon screw in the bottom fixing



3. Now remove the following items as these are only required on deck models Barrel Lock Wheels, Elevation Link and fixings



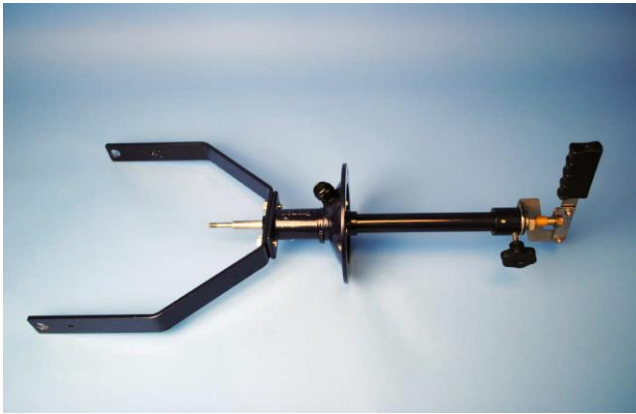
4. When installing the Underdeck mechanism, first separate the following items. U-Piece Assembly, M8 nyloc nut, M8 plain washer, M12 plain washer, Rubber Bellows, Bellows Top Bush and the Push Rod Top Bush



5. Remove the Blanking Plug from the Bellows Bottom Bush.



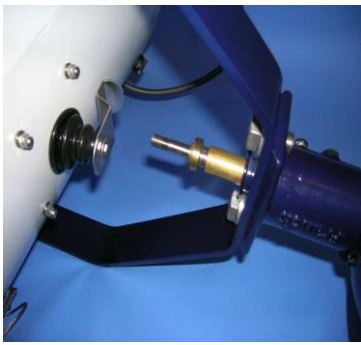
6. Insert the Under Deck through the centre hole making sure it's aligned as photos below



7. Fasten the Underdeck mechanism Using the 3 off M6 x 16 screws and spring washers



8. Re-Fit the following items:
Push Rod Top Bush



9. Bellows Top Bush.

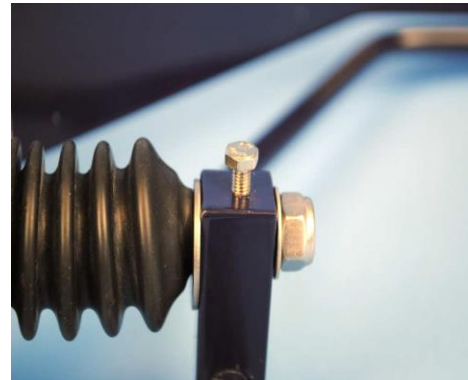


10. Bellows.



11. M12 plain washer.
U-Piece Assy. M8 plain
washer. M8 nyloc nut.

12. Make sure the mechanism is in this position before tightening the M5 x 8 hexagon screw onto the flat of the push rod



13. U-Piece fixings.



14. Fix the U-Piece Assembly using U-Piece fixings
make sure there is a plain washer
both sides of the U-Piece Bush.



15. Completed.
Make sure the Searchlight pans and tilts correctly.

For Pedestal Models:

Mark out and drill through cabin roof using the template provided.

Remove the cable gland in the base and replace with the blanking plug supplied.

Secure the pedestal to the deck using appropriate fixings and then mount the searchlight to the pedestal and secure using the fixings provided. A drilled hole is also required in the deck to allow for the connection to an electrical supply. The searchlight is supplied with 3 metres of supply cable so that the installer can choose a suitable connection point.

5 - Electrical Installation

For safety purposes, only competent personnel should perform the electrical installation. All equipment should be installed to current Electrical Regulations and Standards.

To obtain the maximum light output from the searchlight, it is essential that the full operating voltage of the LED fitted be applied to the LED contacts.

Method of Electrical Connection

- 1) Disconnect the supply before working on the electrical system.
- 2) The searchlight must be connected to a fused electrical supply, using suitably sized cable.
- 3) If the searchlight is located a considerable distance from the supply, provision must be made in the cable size to overcome the voltage drop.
- 4) Whenever possible cable terminations should be made below deck and with approved terminal devices.
- 5) If a spare auxiliary fuse or circuit breaker is not available, one of the correct type/ratings should be fitted and connected to a positive supply. It is advisable to locate a bus bar or main connection and avoid any direct connection to the supply:
- 6) For 110/220v AC products, the following colour coding system should be used for the customer supply cable:

Brown	- Live
Blue	- Negative
Green/Yellow	- Earth

Installation Guideline

A typical installation and connection routine for the L230 LED 110/240v searchlight is as follows:

Referring to wiring diagram C27105, a supply is fed into the Driver junction box, which then provides a common feed to the searchlight.

Cables required to be connected by the customer: -

Supply cable to the Driver junction box.

A typical installation and connection routine for the L230 LED 24v searchlight is as follows:

Referring to wiring diagram C27106, a supply is fed into the Driver junction box, which then provides a common feed to the searchlight.

Cables required to be connected by the customer: -

Supply cable to the Driver junction box.

6 - Operating Instructions

This equipment is designed for use out of doors, in free air. Never place anything on or cover the searchlight when in use as this may present a hazard.

The beam of the searchlight cannot be adjusted.

This product should not be used for any purpose other than for which it was designed. Any modifications to the product should not be undertaken without consulting the manufacturer.

7- Fault Finding

All fault finding must be conducted by a competent person or qualified Electrical Engineer.

Failure of LED to light.

In the event of the LED failing to light the following steps should be taken:

- 1) Check that the mains supply is connected to the input of the LED driver and check all connections as per the wiring diagram. On operation if the LED does not light, switch off mains supply and check all fuses.
- 2) Check output from the LED driver 38.5 volts.

8 - Maintenance and Servicing

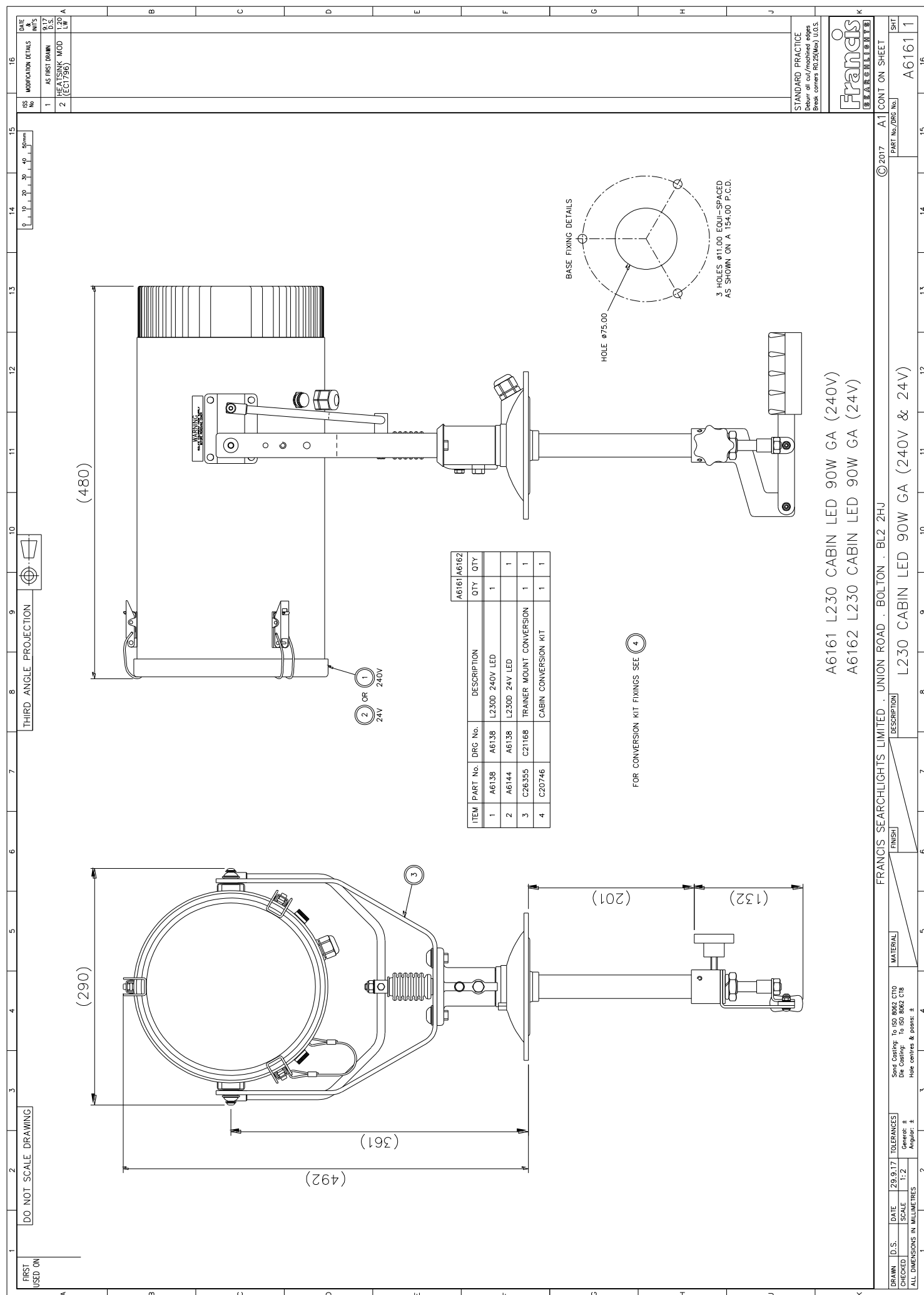
To prolong the service life and performance of your searchlight, the following maintenance guidelines are recommended:

- Maintenance checks should be conducted before every voyage or at least every three months.
- Before checking, disconnect the equipment from the supply.
- Visually inspect the condition of the equipment.
- Any major or minor structural damage should be rectified immediately to reduce sympathetic wear.
- After inspection it may be necessary to clean the inside of the searchlight. The following procedure should be adhered to:
 - Remove the front bezel.
 - Clean the front glass inside and out using a proprietary glass cleaner.
 - Clean the reflector if required.
- It is advisable to check all seals and gaskets for signs of degradation. Renew if necessary.
- Upon completing all maintenance requirements, the searchlight should be tested for full working order (approximately 20 minutes).
- Every six months the external movement mechanisms i.e., lockwheels, elevation and pan mechanisms, should be lightly lubricated.

If in any doubt as to the correct servicing procedures to adopt, please contact your distributor/agent or the manufacturer who will be able to advise the best course of action for your product.

9 - Wiring Diagrams & General Assemblies

Drawing Number	Description
A6138/A6144	L230 LED 90w Deck General Assembly
A6161/A6162	L230 LED 90w Cabin General Assembly
A6163/A6164	L230 LED 90w Deck Pedestal General Assembly
A6165/A6166	L230 LED 90w Cabin Pedestal General Assembly
C27105	Wiring Diagram 100-240v
C27106	Wiring Diagram 24v
C27704	Driver Box Assembly (HV)
C28484	Driver Box Assembly (LV)



DRAWN	D. S.	DATE	29.9.17	TOLERANCES											SHIT		
CHECKED				Customer	SCALE	1:2											
ALL DIMENSIONS IN MILLIMETRES																	
							L230 CABIN LED 90W GA (240V & 24V)										A6161 1
																	14
																	15
																	16
																	17
																	18
																	19
																	20
																	21
																	22
																	23
																	24
																	25
																	26
																	27
																	28
																	29
																	30
																	31
																	32
																	33
																	34
																	35
																	36
																	37
																	38
																	39
																	40
																	41
																	42
																	43
																	44
																	45
																	46
																	47
																	48
																	49
																	50
																	51
																	52
																	53
																	54
																	55
																	56
																	57
																	58
																	59
																	60
																	61
																	62
																	63
																	64
																	65
																	66
																	67
																	68
																	69
																	70
																	71
																	72
																	73
																	74
																	75
																	76
																	77
																	78
																	79
																	80
																	81
																	82
																	83
																	84
																	85
																	86
																	87
																	88
																	89
																	90
																	91
																	92
																	93
																	94
																	95
																	96
																	97
																	98
																	99
																	100
																	101
																	102
																	103
																	104
																	105
																	106
																	107
																	108
																	109
																	110
																	111
																	112
																	113
																	114
																	115
																	116
																	117
																	118
																	119
																	120
																	121
																	122
																	123
																	124
																	125
																	126
																	127
																	128
																	129
																	130
																	131
																	132
																	133
																	134
																	135
																	136
																	137
																	138
																	139
																	140
																	141
																	142
																	143
																	144
																	145
																	146
																	147
																	148
																	149
																	150
																	151
																	152
																	153
																	154
																	155
																	156
																	157
																	158
																	159
																	160
																	161
																	162
																	163
																	164
																	165
																	166
																	167
																	168
																	169
																	170
																	171
																	172
																	173
																	174
																	175
																	176
																	177
																	178
																	179
																	180
																	181
																	182
																	183
																	184
																	185
																	186
																	187
																	188
																	189
																	190
																	191
																	192
																	193
																	194
																	195
																	196
																	197
																	198
																	199
																	200
																	201
																	202
																	203
																	204
																	205
																	206
																	207
																	208
																	209
																	210
																	211
																	212
																	213
																	214
																	215
																	216
																	217
																	218
																	219
																	220
																	221
																	222
																	223
																	224
																	225
																	226
																	227
																	228
																	229
																	230
																	231
																	232
																	233
																	234
																	235
																	236
																	237
																	238
																	239
																	240
																	241
																	242
																	243
																	244
																	245
																	246
																	247
																	248
																	249
																	250
																	251
																	252
																	253
																	254
																	255
																	256
																	257
																	258
																	259
																	260
																	261
																	262
																	263
																	264
																	265
																	266
																	267
																	268
																	269
																	270
																	271
																	272
																	273
																	274
																	275
																	276
																	277
																	278
																	279
																	280
																	281
																	282
																	283
																	284
																	285
																	286
																	287
																	288
																	289
																	290
																	291
																	292
																	293
																	294
																	295
																	296
																	297
																	298
																	299
																	300
																	301
																	302
																	303
																	304
																	305
																	306
																	307
																	308
																	309
																	310
																	311
																	312
																	313
																	314
																	315
																	316
																	317
																	318
																	319
																	320
																	321
																	322
																	323
																	324
																	325
																	326
																	327
																	328
																	329
																	330
																	331
																	332
																	333
																	334
																	335
																	336
																	337
																	338
																	339
																	340
																	341
																	342
																	343
																	344
																	345
																	346
																	347
																	348
																	349
																	350
																	351
																	352
																	353
																	354
																	355
																	356
																	357
																	358
																	359
																	360
																	361
																	362
																	363
																	364
																	365
																	366
																	367
																	368
																	369
																	370
																	371
																	372
																	373
																	374
																	375
																	376
																	377
																	378
																	379
																	380
																	381
																	382
																	383
																	384
																	385
																	386
																	387
																	388
																	389
																	390
																	391
																	392
																	393
																	394
																	395
																	396
																	397
																	398
																	399
																	400
																	401
																	402
																	403
																	404
																	405
																	406
																	407
																	408
																	409
																	410
																	411
																	412
																	413
																	414
																	415
																	416
																	417
																	418
																	419
																	420
																	421
																	422
																	423
																	424
																	425
																	426
																	427
																	428
																	429
																	430
																	431
																	432
																	433
																	434
																	435
																	436
																	437
																	438
																	439
																	440
																	441
																	442
																	443
																	444
																	445
																	446
																	447
																	448
																	449
																	450
																	451
																	452
																	453
																	454
																	455
																	456
																	457
																	458
																	459
																	460
																	461
																	462
																	463
																	464
																	465
																	466
																	467

FIRST
USED ON

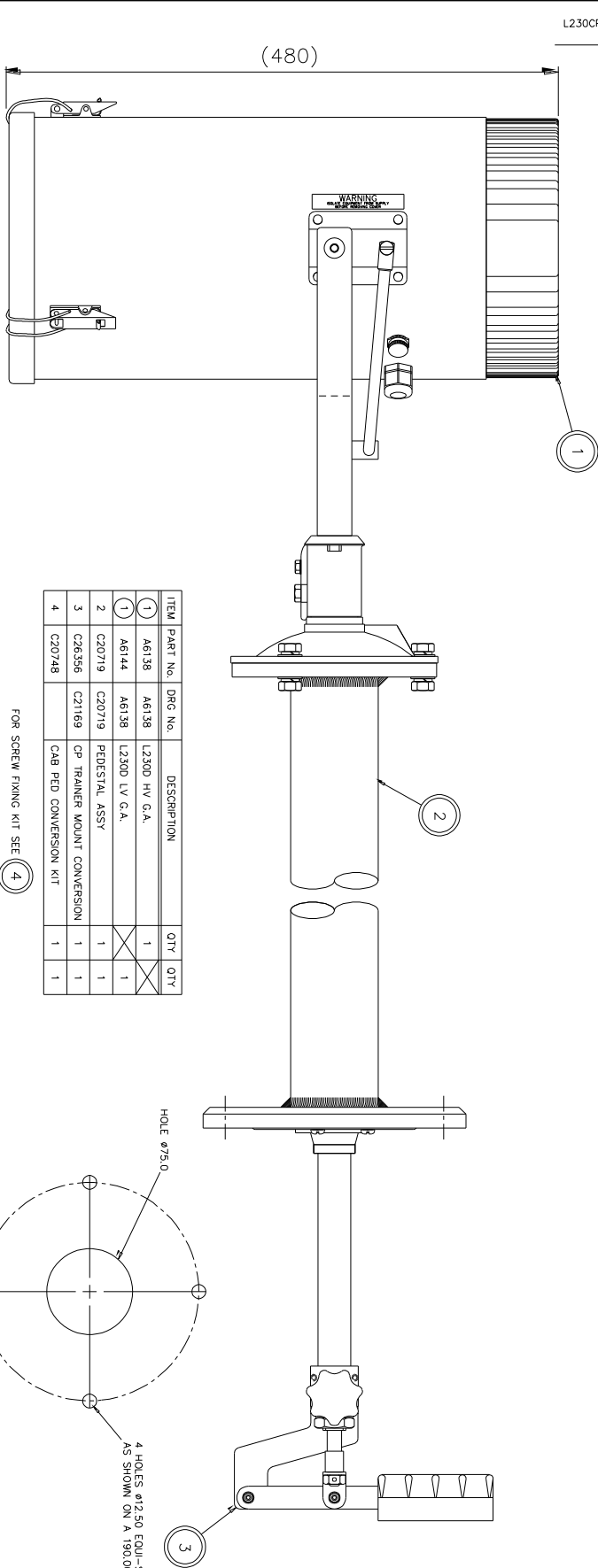
DO NOT SCALE DRAWING

THIRD ANGLE PROJECTION



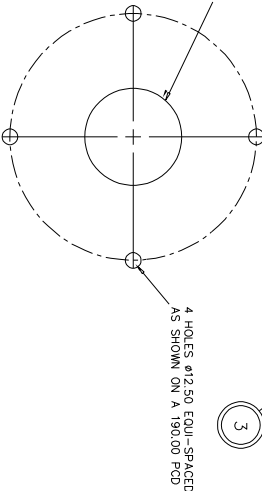
0 10 20 30 40 50mm

ISS No	MODIFICATION DETAILS	DATE INT'S
1	AS FIRST DRAWN	2.20 LW

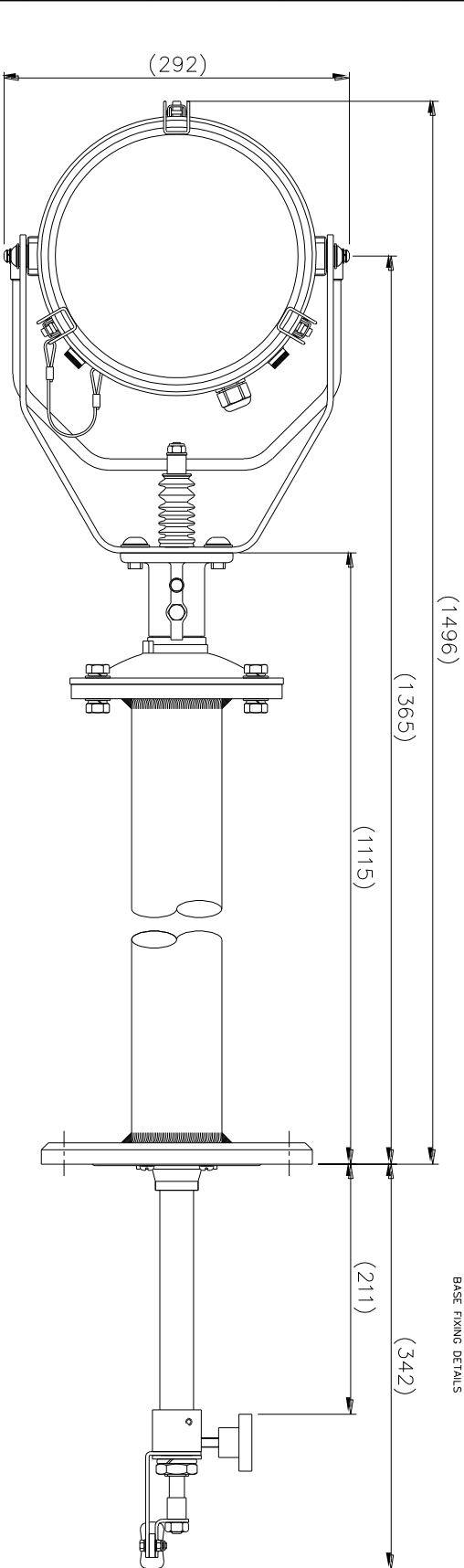


ITEM	PART No.	DRG No.	DESCRIPTION	QTY	QTY
1	A6138	A6138	L230D HV G.A.	1	1
1	A6144	A6138	L230D LV G.A.	1	1
2	C20719	C20719	PEDESTAL ASSY	1	1
3	C26356	C21169	CP TRAINER MOUNT CONVERSION	1	1
4	C20748		CAB PED CONVERSION KIT	1	1

FOR SCREW FIXING KIT SEE (4)



BASE FIXING DETAILS



A6165 (240V)
A6166 (24V)

STANDARD PRACTICE
Depict all cut/finished edges
with green 05245m) 1013.



FRANCIS SEARCHLIGHTS LIMITED . UNION ROAD . BOLTON . BL2 2HU

DRAWN	LW	DATE	2.20	TOLERANCES
CHECKED		SCALE	1:2	General: ± Angular: ±
ALL DIMENSIONS IN MILLIMETRES				
Send Castings: To ISO 8062 C1700 Die Castings: To ISO 8062 C18 Hole centres & posits: ±				

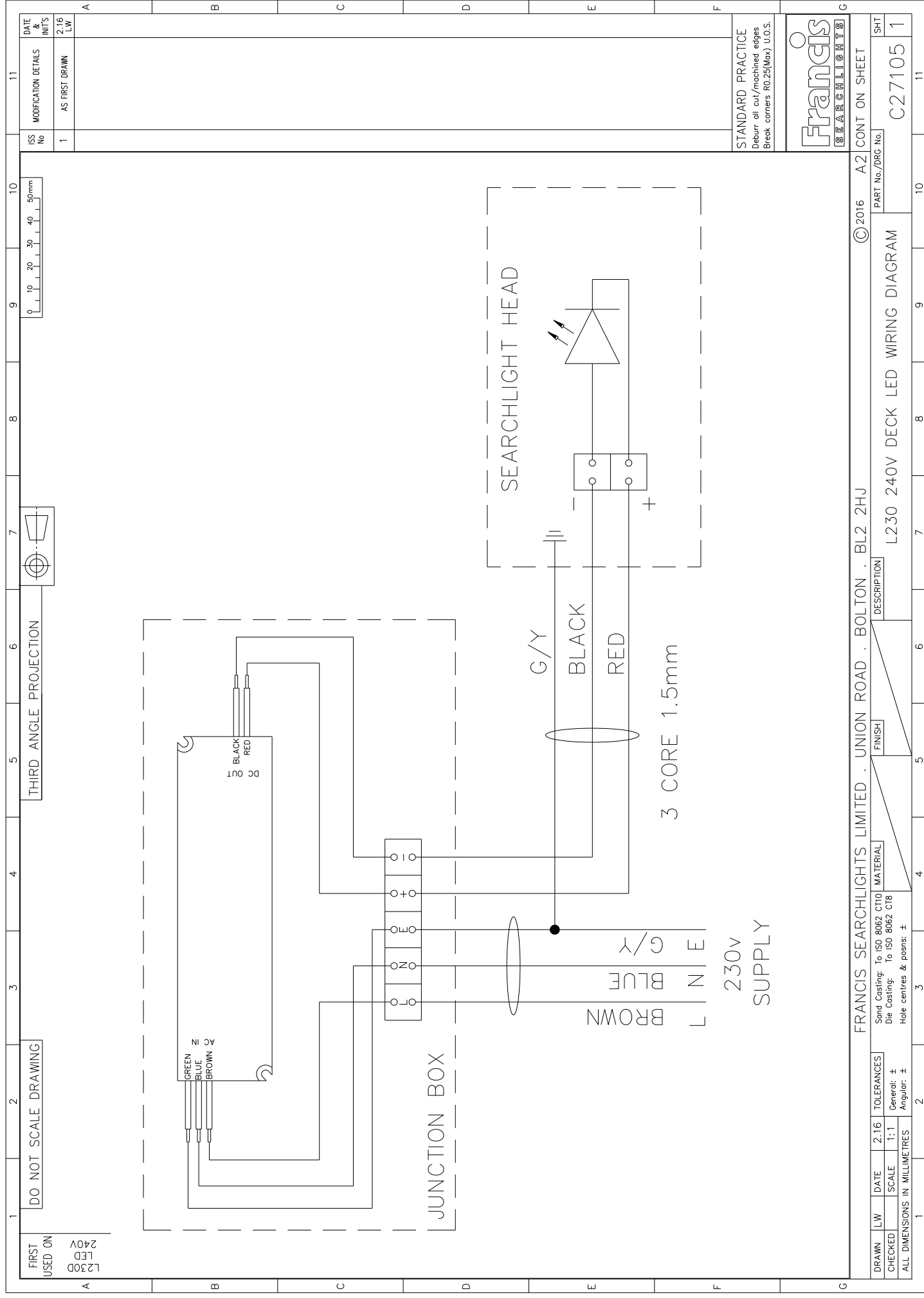
MATERIAL

FINISH

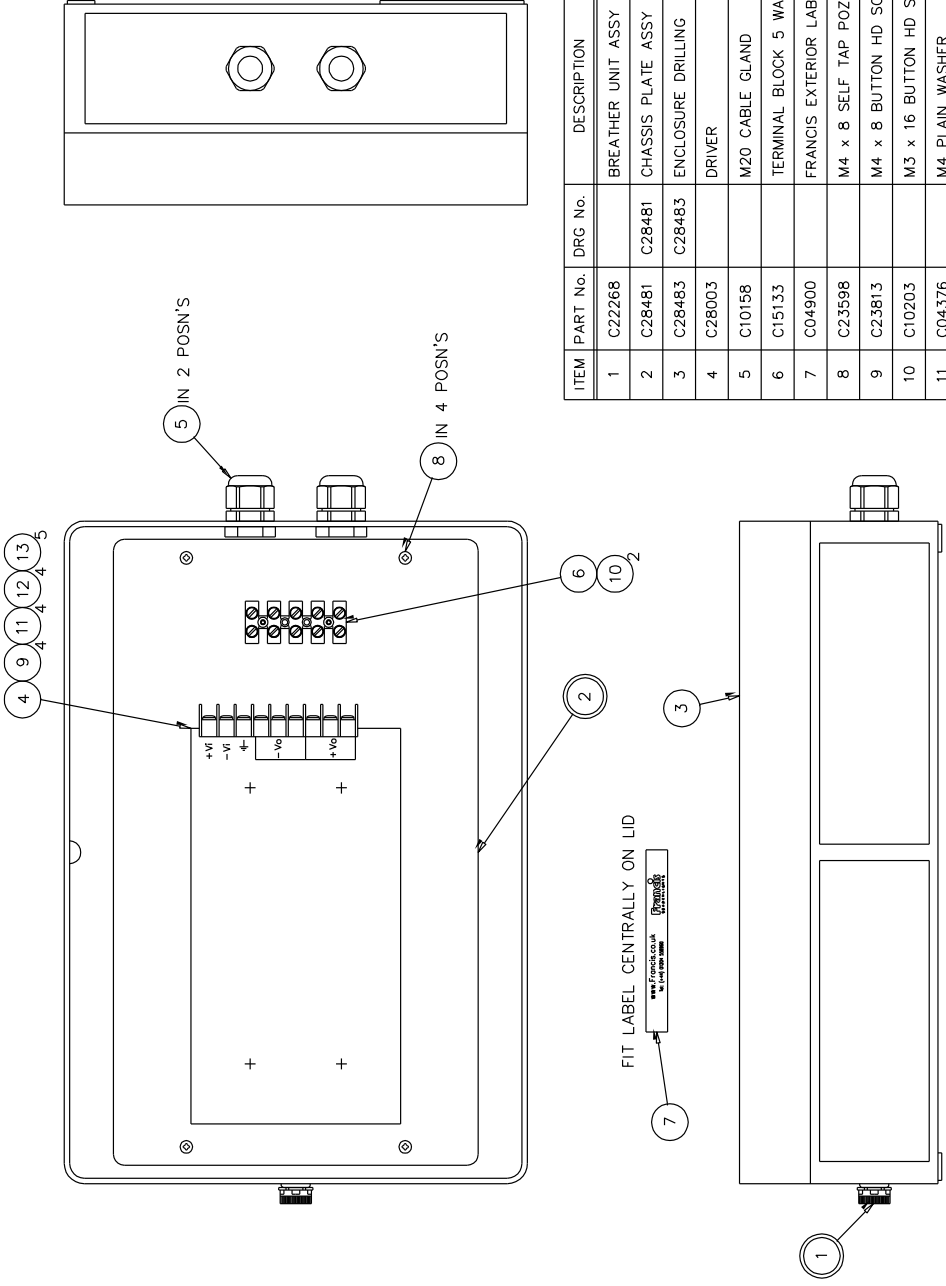
DESCRIPTION

L230CP G.A.

© 2020	A1 CONT ON SHEET	SHT
PART No./DRG No.		A6165 1



[illegible]



ITEM	PART No.	DRG No.	DESCRIPTION	QTY
1	C22268		BREATHER UNIT ASSY	1
2	C28481	C28481	CHASSIS PLATE ASSY	1
3	C28483	C28483	ENCLOSURE DRILLING	1
4	C28003		DRIVER	1
5	C10158		M20 CABLE GLAND	2
6	C15133		TERMINAL BLOCK 5 WAY	1
7	C04900		FRANCIS EXTERIOR LABEL	1
8	C23598		M4 x 8 SELF TAP POZI HD SCREW	4
9	C23813		M4 x 8 BUTTON HD SCREW	4
10	C10203		M3 x 16 BUTTON HD SCREW	2
11	C04376		M4 PLAIN WASHER	4
12	C08793		M4 S/C SPRING WASHER	4
13	C27569		RED FORK CRIMP	5

STANDARD PRACTICE
Deburr all cut/machined edges
Break corners R0.25(Max) U.O.S.



10 – Spare Parts List

The following spare parts can be ordered directly from the manufacturer:

Part Number	Description
C22205-01	Handle Assembly (Deck Model)
C11025-01	Lock wheel Assembly (Deck Model)
C10168-00	Base 'O' Ring
C10169-00	Spigot 'O' Ring
C08926-00	Push Rod Seal
C21967-00	Bellows Bottom Bush 'O' Ring
C20281-00	Bellows (Cabin Model)
C20745-01	Lock wheel Assembly (Cabin Model)
C26630-00	Front Glass
C21141-00	Front Glass Gasket
C22268-01	Breather Assembly
C28068-01	LED Replacement Kit
C27013-00	LED Holder
C27014-00	LED Reflector
C27699-01	LED Driver (HV)
C28003-00	LED Driver (LV)

To prolong the life and performance of your product, we recommend that you only specify Francis Searchlights spare parts. This will ensure that any warranties on your equipment will not be invalidated.

When ordering spare parts please contact the Sales Department at Francis Searchlights Limited. Please always quote searchlight model and serial number. This will enable a fast response to your spares' requirements.