



User Instruction & Installation Manual

M15 12/24v Halogen Searchlight



Product Reference Number:

A6200 – M15 Deck

A6201 – M15 Cabin

Manufacturer's details:

Francis Searchlights Ltd
Union Road, Bolton
Lancashire, BL2 2HJ, UK
Tel: +44 (0) 1204 558960
Fax: +44 (0) 1204 558979
<http://www.francis.co.uk>
E-mail: sales@francis.co.uk

Distributor details:

--

Manual Part Number: C29682
Issue: 2 29.11.23 EC: 1990

CONTENTS

- 1 - Introduction
- 2 - Safety Precautions
- 3 - Technical Information
- 4 - Unpacking and Installation Instructions
- 5 - Electrical Installation
- 6 - Operating Instructions
- 7 - Fault Finding
- 8 - Maintenance and Servicing
- 9 - General Assembly Drawing
- 10 - Spare Parts List

1 - Introduction

It is imperative that this manual is read carefully and understood before installing your equipment. For your future reference please keep this manual in a safe place.

Thank you for specifying a product from the Francis Searchlights range. All Francis products are designed to give complete customer satisfaction and are manufactured to the highest engineering standards to ensure optimum performance and service life.

The Francis Halogen range combines features proven over many years' service in the most hazardous conditions in both marine and land installations.

To prolong the life and performance of your product, we recommend that you only specify Francis Searchlights spare parts. This will also ensure that any warranties on your equipment will not be invalidated. Information on spares ordering and parts is provided in this manual.

Should you ever need to contact Francis Searchlights Ltd. regarding your equipment, please always quote the Product Serial Number.

2 - Safety Precautions

The following instructions must be adhered to, to ensure a safe working environment and the safety of the user.

- Prevent rain, snow, condensation, and water droplets from contacting the lamp as this may cause bulb failure, and possible shattering.
- Quartz halogen lamps run with a high internal pressure more than atmospheric. Whilst the construction is inherently strong, there is a slight risk of the lamp shattering.
- Never look directly into an illuminated searchlight as this may cause severe damage to eyesight. If it is necessary to inspect a lamp whilst in operation, always wear suitable protective goggles.
- Should it be necessary to examine the lamp with the front bezel removed, always use a protective shield to ensure a safe working environment.
- Never attempt to clean the lamp when in use.
- Searchlights get hot. Never touch the unit when lit and always allow at least ten minutes for cooling down after turning off.
- Ensure the lamp has cooled sufficiently before removal. During the cooling down period avoid mechanical or thermal shock to the lamp as this may cause shattering.
- If undue force appears necessary to remove the lamp, the equipment should be inspected by a competent person, or contact the manufacturer.
- When breaking a lamp for disposal, care must be taken to ensure that the fragments are safely contained. Precautions must be taken against flying glass and other fragments. This operation should be performed outdoors or in a well-ventilated area. In ALL cases reference should be made to the lamp manufacturers instructions packed with the lamp.
- Due to the vast range of lamps available, it may appear possible that more powerful lamps can be used in the equipment for which it was designed. Even when the unit will physically accept a higher wattage lamp, this substitution is not recommended as it could be dangerous.

3 – Technical Information

This product has been designed to operate in accordance with the product specification. The M15 searchlight have the following features:

- Constructed from marine grade materials and fixings.
- Parabolic super pure aluminium reflector.
- Powder coated and stove enamel paint finish.
- Tilt elevation $\pm 35^\circ$.
- Pan rotation 360° .
- Fixed focus.
- Toughened super clear Optiwhite front glass.
- Sealing to IP66.
- Tungsten Halogen Lamps.
- Operational temperature -20° .
- Weight Deck – 4Kg Cabin – 4.5 Kg.

The searchlight also performs to the following optical data:

Volts	Watts	Range @ 1 Lux	P.B.C.P. x 1000	Div.	Lamp Life	Lamp Cap	Part Number
12v	100	643M	414	2.2	2000 Hrs	G6.35	D9848
24v	150	784M	614	2.8	300 Hrs	G635	D14795
24v	250	910M	828	2.3	2000 Hrs	G6.35	D4695
24v	250	1095M	1200	3.8	300 Hrs	G6.35	D9851

In order that the searchlight operates correctly it is imperative that competent personnel are responsible for the installation, operation, and servicing of this equipment. Failure to adhere to this advice may cause premature failure or incorrect operation of the searchlight, which may damage the equipment or cause personal injury.

4 - Unpacking and Installation Instructions

The following instructions should be read and fully understood prior to installing the equipment to ensure that the correct procedures are followed, and all safety precautions are observed.

If the equipment has been in storage for a considerable time, it is advisable to conduct a routine maintenance check on all parts before installation.

Care should be taken when unpacking the searchlight, so as not to cause damage to the equipment or cause personal injury. A visual inspection of the equipment should be conducted to check for damage during transit or damaged lamps.

Enclosed in the packing for the M15 is a base mounting gasket. This should be retained for installation purposes.

Preparing the Mounting Position

Deck

Mark out and drill 3 off holes $\varnothing 6.4$ on a 108.0 P.C.D.

Cabin

Mark out and drill 3 off holes $\varnothing 6.4$ on a 108.0 P.C.D.

A central hole $\varnothing 45.0$ will be required to accept the movement of the control handle.

Make sure to fit the base mounting gasket, when in the desired position bolt the searchlight firmly down. On an UN-even surface, a suitable sealant maybe required to provide a weatherproof seal.

5 - Electrical Installation

For safety purposes, only competent personnel should perform the electrical installation. All equipment should be installed to current Electrical Regulations and Standards.

To obtain the maximum light output from the searchlight, it is essential that the full operating voltage of the lamp fitted be applied to the lampholder contacts.

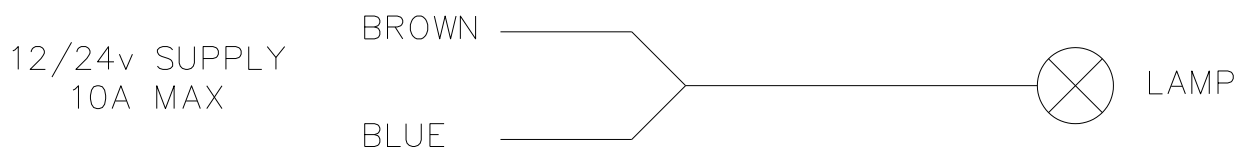
Method of Electrical Connection

- 1) Disconnect the supply before working on the electrical system.
- 2) The searchlight must be connected to a fused electrical supply, using suitably sized cable.
- 3) If the searchlight is located a considerable distance from the supply, provision must be made in the cable size to overcome the voltage drop.

The following table should be used for indication purposes only:

Searchlight	12v 100w	24v 150w	24v 250w
Cable Size (mm ²)	Distance Max	Distance Max	Distance Max
1.0	6 MTRS	15 MTR	9 MTRS

- 4) Whenever possible cable terminations should be made below deck and with approved terminal devices.
- 5) If a spare auxiliary fuse or circuit breaker is not available, one of the correct type/ratings should be fitted and connected to a positive supply. It is advisable to locate a bus bar or main connection and avoid any direct connection to the supply:
- 6) When wiring the negative supply, the direct connection to a battery or supply, or metal hull/object, should be avoided. It is advisable to use a suitable commoning block or connection.
- 7) For ease of use a single pole switch, of the appropriate rating, should be fitted in a convenient location. All cable lengths should be kept to a minimum.



6 - Operating Instructions

This equipment is designed for use out of doors, in free air. Never place anything on, or cover, the searchlight when in use as this may present a hazard.

The searchlight can be tilted $\pm 35^\circ$ or rotated 360° by pushing/pulling or rotating the underdeck handle (Cabin) or rear handle (Deck).

This product should not be used for any purpose other than for which it was designed. Any modifications to the product should not be undertaken without consulting the manufacturer.

Setting to Work

Safe service in use necessitates the strict observance of the following precautions.

- Any article fabricated from quartz or glass is inherently fragile and care should therefore be taken, always, when handling lamps.
- Eye protection must be worn when handling lamps that have been removed from their packaging materials. The protective sleeve should not be removed from the lamp for safety reasons, as there is a remote possibility of the lamp shattering violently, especially if it is subjected to mechanical shock or vibration.
- Quartz lamps should not become contaminated with oils, grease or come into contact with skin.

When fitting the lamp:

- Always isolate the equipment from the supply before inserting a lamp.
- Ensure the circuit is suitably fused.
- Ensure that the lamp is of the recommended type and rating.
- Check the lampholder is in good condition. If the contacts show any sign of corrosion the lamp holder should be replaced.
- Check that the lamp holder is in a good dry condition. Never allow water to collect in the lamp fitting or come into contact with the lamp.

To fit the lamp:

- Unclip the three latches on the front of the searchlight.
- Remove the front bezel and glass.
- Cut open one end of the protective sleeve surrounding the lamp.
- Using the sleeve to prevent the fingers coming into contact with the lamp, position the two lamp pins in-line with the lamp holder.
- Gently push the lamp into the lamp holder and discard the protective sleeve.
- Position the front bezel onto the searchlight centrally and fasten the three latches.

In all circumstances the lamp manufacturer's data should be referred to when dealing with lamps.

Testing

Upon correct installation and connection to an electrical supply, the equipment can be tested to ensure its correct performance. A competent person with some knowledge of electrical equipment must carry out this work.

Equipment required:

Multi-meter with leads.

Ammeter.

Using the equation $P=VI$ the approximate power output of the equipment can be calculated in the following way.

- Using the multimeter take a voltage reading.
- Using the Ammeter, take an amp reading from the live cable to the lamp.
- Multiply these values together to give an approximate wattage.

For example:

Using a 24v 250w Tungsten Halogen lamp.

Voltage reading: 24v.

Amps reading: 10.4 amps.

Therefore:

$$\text{Wattage} = 24 \times 10.4 = 250 \text{ watts.}$$

7- Fault Finding

If a fault occurs the following procedures should be adopted. Any work to be carried out should be conducted by a competent person. A multimeter should be used for fault finding purposes.

Fault

Lamp fails to light.

Causes

- 1) Power not supplied.
- 2) Fuse blown.
- 3) Failed Lamp

Remedy

- 1) Check voltage at supply / battery. If necessary, recharge battery. If supply is not present fault is at customer's supply. If power is present, see remedy 2.
- 2) Check fuse for visual failure. If non noticeable check fuse for continuity. If fuse found to be faulty, replace with new part. If found to be working correctly see remedy 3.
- 3) Firstly, check supply. If supply present, disconnect unit from power supply before removing lamp. If noticeable damage to filament is present, the lamp will have failed. The lamp can also be checked using a multimeter for continuity of the filament. Replace new lamp following all precautions mentioned previously and lamp manufacturers' instructions.

8 - Maintenance and Servicing

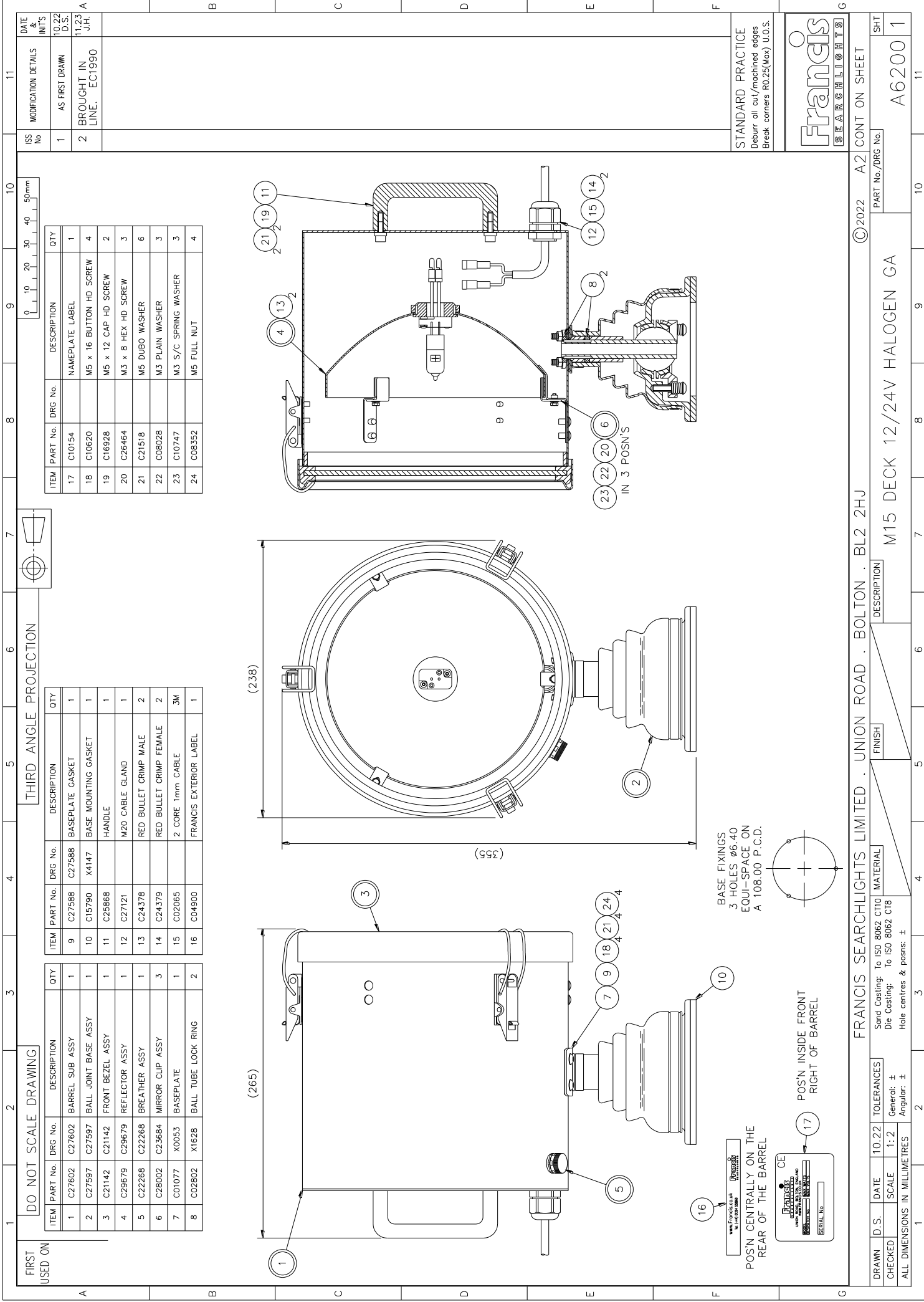
To prolong the service life and performance of your searchlight, the following maintenance guidelines are recommended:

- Maintenance checks should be conducted before every voyage or at least every three months.
- Before checking, disconnect the equipment from the supply.
- Visually inspect the condition of the equipment.
- Any major or minor structural damage should be rectified immediately.
- After inspection it may be necessary to clean the inside of the searchlight. The following procedure should be adhered to:
 - Remove the front bezel.
 - Clean the front glass inside and out using a proprietary glass cleaner.
 - Clean the reflector if required.
 - Ensure that the lampholder is free from corrosion or other damage.
- It is advisable to check all seals and gaskets for signs of degradation. Renew if necessary.
- Upon completing all maintenance requirements, the searchlight should be tested for full working order (approximately 20 minutes).

If in any doubt as to the correct servicing procedures to adopt, please contact your distributor/agent or the manufacturer who will be able to advise the best course of action for your product.

9 - General Assembly Drawing

Drawing Number	Description
A6200	M15 Deck General Assembly
A6201	M15 Cabin General Assembly



Technical drawing of a Halogen Gas Appliance (M15 Cabin 12/24V Halogen GA) showing various views and dimensions.

Views:

- Top View:** Shows the overall dimensions (355, 162, 238) and the central hole (445.00). It includes callouts for base fixings (3 holes, 6.40, 108.00 P.C.D.) and the central hole.
- Front View:** Shows the front profile of the appliance with callouts for the barrel (1), reflector (2), and base (3).
- Side View:** Shows the side profile of the appliance with callouts for the barrel (1), reflector (2), and base (3).
- Bottom View:** Shows the bottom profile of the appliance with callouts for the barrel (1), reflector (2), and base (3).

Dimensions:

- Overall width: 355
- Overall height: 162
- Overall depth: 238
- Central hole diameter: 445.00
- Base fixings: 3 holes, 6.40, 108.00 P.C.D.

Parts List:

ITEM	PART No.	DRG No.	DESCRIPTION	QTY
1	C27602	C27602	BARREL SUB ASSY	1
2	C27598	C27597	BALL JOINT BASE ASSY	1
3	C21142	C21142	FRONT BEZEL ASSY	1
4	C29679	C29679	REFLECTOR ASSY	1
5	C22268	C22268	BREATHING ASSY	1
6	C28002	C23684	MIRROR CLIP ASSY	3
7	C01077	X0053	BASEPLATE	1
8	C02802	X1628	BALL TUBE LOCK RING	2
9	C27588	C27588	BASEPLATE GASKET	1
10	C15790	X4147	BASE MOUNTING GASKET	1
11	C23529		M20 BLANKING PLUG	1
12	C24378		RED BULLET CRIMP MALE	2
13	C24379		RED BULLET CRIMP FEMALE	2
14	C03640		2 CORE 0.75mm CABLE	3M
15	C04900		FRANCIS EXTERIOR LABEL	1
16	C10154		NAMEPLATE LABEL	1
17	C10620		M5 x 16 BUTTON HD SCREW	4
18	C10206		M5 x 12 BUTTON HD SCREW	2
19	C26464		M3 x 8 HEX HD SCREW	3
20	C21518		M5 DUBO WASHER	6
21	C08392		M5 PLAIN WASHER	2
22	C08931		M5 S/C SPRING WASHER	2
23	C08028		M3 PLAIN WASHER	3
24	C10747		M3 S/C SPRING WASHER	3
25	C08352		M5 FULL NUT	6

Notes:

- STANDARD PRACTICE: Debur all cut/machined edges. Break corners R0.25(Max) U.O.S.
- FRANCIS SEARCHLIGHTS
- ©2022 A2 CONT ON SHEET
- Part No./DRG No. A6201
- DESCRIPTION: M15 CABIN 12/24V HALOGEN GA
- FINISH: To ISO 8062 CT10
- MATERIAL: To ISO 8062 C18
- Hole centres & posns: ±
- TOLERANCES: General: ±
- Angular: ±
- SCALE: 1:2
- DATE: 10.22
- DRAWN: 1
- CHECKED: 2
- ALL DIMENSIONS IN MILLIMETRES

10 – Spare Parts List

The following spare parts can be ordered directly from the manufacturer:

Part Number	Description
MK1	
D9848	12v 100w Lamp
D14795	24v 150w Lamp
D4695	24v 250w Lamp
D9851	24v 250w Lamp
C02193-00	Ball Joint Base Spring
C15557-00	Base Bellows
C15920-00	Base Bellows Retaining Clip (Large)
C28385-00	Base Bellows Retaining Clip (Small)
C21140-00	Front Glass
C21141-00	Front Glass Gasket
C25988-00	Reflector
C16878-00	Lamp holder
C22268-01	Breather Assembly
C15790-00	Base Mounting Gasket

To prolong the life and performance of your product, we recommend that you only specify Francis Searchlights spare parts. This will ensure that any warranties on your equipment will not be invalidated.

When ordering spare parts please contact the Sales Department at Francis Searchlights Limited. Please always quote searchlight model and serial number. This will enable a fast response to your spares' requirements.