

L300RC HV 250w RF Laser Remote Control Searchlight

User / Installation Manual

Product Part Number:

A7310 – L300RC HV 250w RF Laser Variable Speed Remote Control Searchlight

PLEASE NOTE!

Please read this manual before installation.



www.francis.co.uk

CONTENTS

1. Introduction
2. Safety Precautions
3. Technical Information
4. Unpacking and Installation Instructions
5. Electrical Installation
6. Start-up and Operating
 - 6.1. FBUS Data & Panel Addresses
7. Fault Finding
 - 7.1. Problems After Installation
 - 7.2. Obtaining Fault Status
8. Maintenance and Servicing
9. Wiring Diagram & General Assembly
10. Spare Parts List

General Information:

Francis Searchlights Ltd

Union Road, Bolton, BL2 2HJ

United Kingdom

T: 00 44 (0)1204 558 960

E: Sales@francis.co.uk

W: www.francis.co.uk

1 – Introduction

It is imperative that this manual is read carefully and understood before installing your equipment. For your future reference please keep this manual in a safe place.

Thank you for specifying a product from the Francis Searchlights range. All Francis products are designed to give complete customer satisfaction and are manufactured to the highest engineering standards to ensure optimum performance and service life.

The Francis Laser range combines features proven over many years in the most hazardous conditions in both marine and land installations.

To prolong the life and performance of your product, we recommend that you only specify Francis Searchlights spare parts. This will also ensure that any warranties on your equipment will not be invalidated. Information on spares ordering and parts is provided in this manual.

Should you ever need to contact Francis Searchlights Ltd. regarding your equipment, please always quote the Product Number and Serial Number of the product you have, this is located on the name plate, inside the front of the barrel to the right.

In order that the searchlight operates correctly it is imperative that competent personnel are responsible for the installation, operation, and servicing of this equipment. Failure to adhere to this advice may cause premature failure or incorrect operation of the searchlight, which may damage the equipment or cause personal injury.

2 – Safety Precautions

The following instructions must be adhered to, to ensure a safe working environment and the safety of the user.

Note: When unpacking or manoeuvring the searchlight into its fixing position, suitable lifting points must be used to prevent damage to the equipment or personal injury.

- Only suitably qualified personnel may install the products.
- Never look directly into an illuminated searchlight as this may cause severe damage to eyesight. If it is necessary to inspect a searchlight whilst in operation, always wear suitable protective goggles.
- Searchlights get hot. Never touch the unit when lit and always allow 15 to 20 minutes for cooling down after turning the searchlight off.
- Never place anything on or cover the searchlight when in use.

3 – Technical Information

Electrical			
Input voltage:	110 VAC	240 VAC.	
Input current:	2.6A	1.3A	
Wattage:	250w		
Dimensions			
Height:	1014mm		
Width:	414mm		
Depth:	711mm		
Weight: Searchlight	44Kgs		
Searchlight Performance			
Range @ 1 Lux:	7211m		
Laser Life (approx.)	12,000h		
Divergence:	1°-18°		
Colour temperature:	6500K		
Luminous flux:	16,000 lumens		
Searchlight movement			
Pan rotation:	365°		
Tilt elevation:	Up 35° & Down 35°		
Pan speed:	Variable Speed 1 to 60°/sec		
Tilt Speed:	Variable Speed 1 to 17°/sec		
Material, colour, IP rating			
Searchlight barrel head:	Aluminium BSEN485 Grade 5251		
Gearbox housing:	Stainless Steel BS1449 304S31		
Crutch:	Stainless Steel BS1449 304S11		
Paint finish powder coated & stove enamel paint:	Ash Grey BS4800 00A01, May Green RAL 6017		
IP rating:	IP67 Gearbox – IP56 Searchlight		
Operating temperature:	-20°C to +50°C (-50°C on request)		
Certification approval:			
Lloyds TA:			
Russian Maritime Register of Shipping:	Parts XI & XVII, Part IV		
ISO9001 2015:	Quality Management System		

4 – Unpacking and Installation Instructions

The following instructions should be read and fully understood prior to installing the equipment to ensure that the correct procedures are followed, and all safety precautions are observed.

Note: If the equipment has been in storage for a considerable amount of time, it is advisable to conduct a routine maintenance check on all parts before installation.

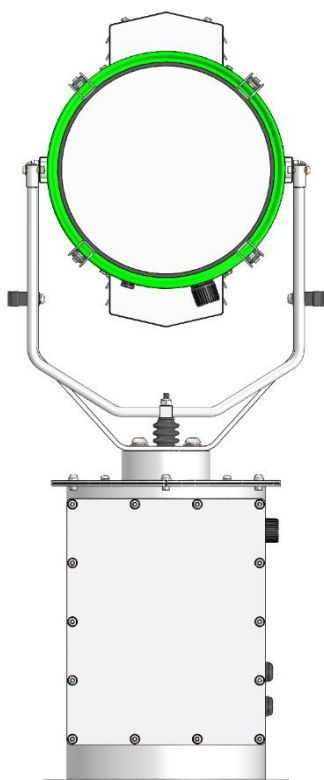
Safety Precautions

This equipment should not be connected to an electrical supply before being installed. Installation procedures should be adhered to, to ensure a safe working environment and reduce the risk of damage or personal injury.

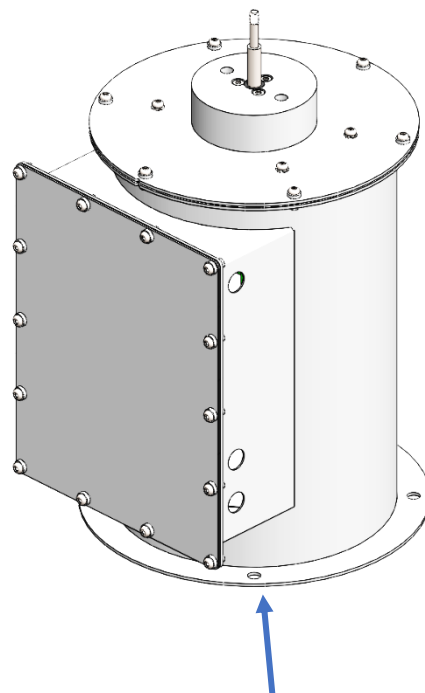
Preparing the Mounting Position

Mark out and drill the fixing holes through the deck. If anti-vibration mounts are to be fitted, the fixing holes for the mounts should also be marked out and drilled. Prior to manoeuvring the searchlight into its' fixing position, the AV mounts should be fitted to the base. When in the desired position, bolt the searchlight firmly down. On an uneven surface it may be necessary to use a suitable sealant such as silicone, to ensure a weatherproofed joint.

Please refer to the drawing C27312 for the Joystick Panel cut out size, which you can find at the back of this manual.



Rear of Searchlight



**Base Fixings, 4 Holes Ø12.50
Equally Spaced on a Ø 290.00**

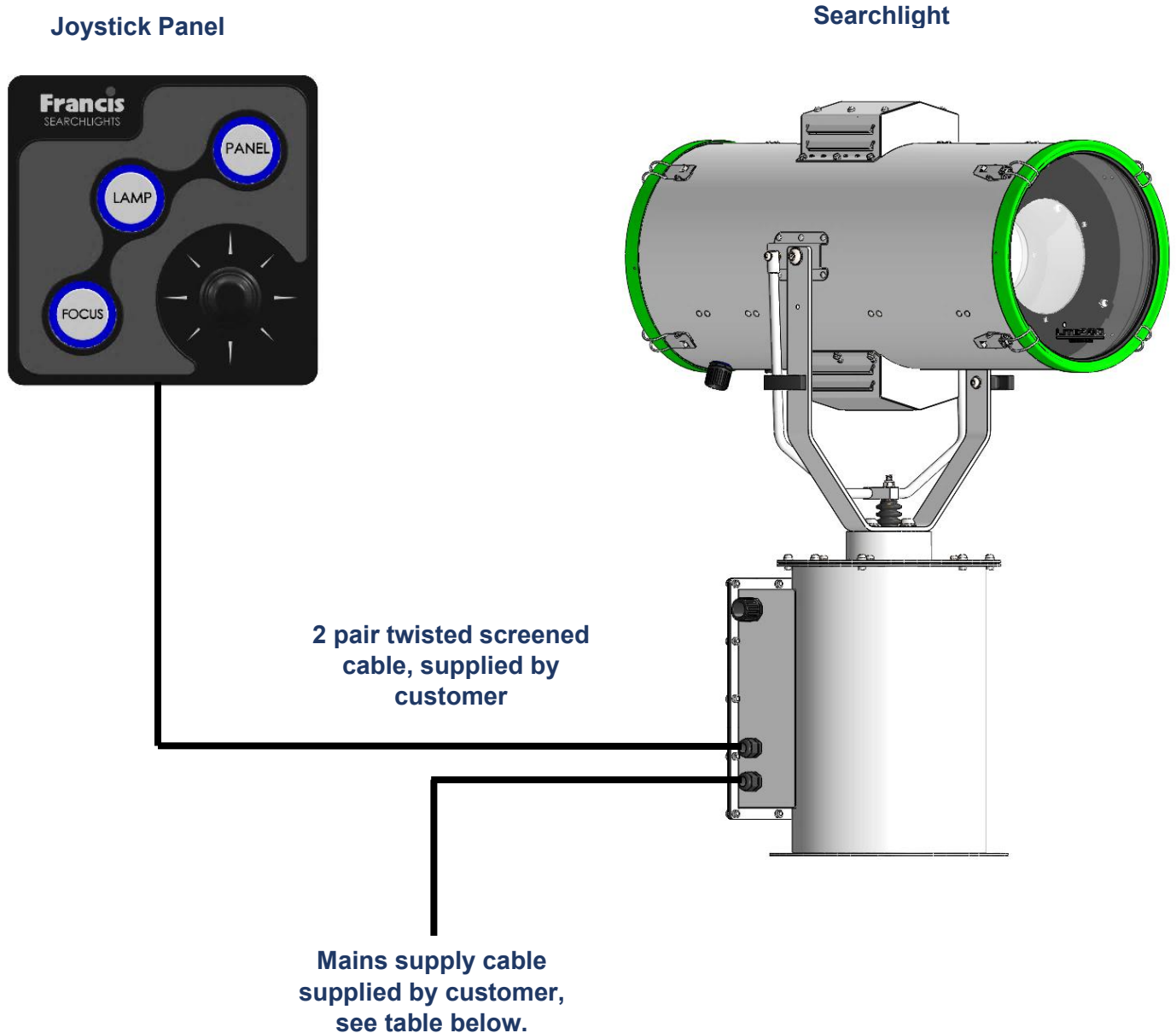
5 – Electrical Installation

For safety purposes, only competent personnel should perform the electrical installation. All equipment should be installed to current Electrical Regulations and Standards.

Referring to wiring diagram C29776 (at the back of the manual), a supply is fed to the gearbox housing, which then provides a common feed to the motor gearbox, searchlight, and joystick panel.

Cables required to be connected by the customer: -

- 2 pair twisted 0.22mm 100ohm screened cable from the joystick panel to the gearbox housing.
- Mains supply cable to the gearbox housing.



To obtain the maximum light output from the searchlight, it is essential that the full operating voltage of the laser fitted be applied.

Method of Electrical Connection

- Disconnect the supply before working on the electrical system.
- The searchlight must be connected to a fused electrical supply, using suitably sized cable.
- If the searchlight is located a considerable distance from the supply, provision must be made in the cable size to overcome the voltage drop.

The following table below indicates the maximum length of cable to be used for the supply cable, from the mains supply to the gearbox housing.

Searchlight	115v 250w	240v 250w
Cable Size (mm ²)	Distance Max	Distance Max
1.5	65M	273M
2.5	110M	461M

- Whenever possible cable terminations should be made below deck and with approved terminal devices.
- If a spare auxiliary fuse or circuit breaker is not available, one of the correct type/ratings should be fitted and connected to a positive supply. It is advisable to locate a bus bar or main connection and avoid any direct connection to the supply.
- For 115/240v AC products, the following colour coding system should be used for the customer supply cable:

Brown	-	Live
Blue	-	Negative
Green/Yellow	-	Earth

Note: This equipment must be earthed.

6 – Start-up and Operating

Start-Up

When the main power is first applied to the searchlight, the searchlight will carry out a self-test, it will Pan to the left limit and Tilt down to the limit, once this is complete, the searchlight will then move to the centre and horizontal, during this please do not try and operate the searchlight while this test is being carried out. Once the searchlight is back at centre the searchlight can then be operated normally, by pressing the Panel button on the control panel.

Operating

Switch On

The panel is activated using the PANEL button. This will illuminate brightly when the panel is active. Alternate operations of the PANEL button will switch the panel on and off.

Lamp Control

When the panel is active pressing the LAMP button will switch the lamp on or off. If the joystick panel is switched off with the PANEL button the lamp will switch off.

Focus Control

The lamp focus can be adjusted using the FOCUS button. Lamp focus will adjust continuously whilst FOCUS is pressed.

Beam Direction

The beam direction can be adjusted using the joystick when the panel is active. Moving the joystick left or right will pan the beam clockwise or anticlockwise. Moving the joystick up or down will move the beam up or down. The speed of movement is proportional to the movement of the joystick. It is possible to move the beam in both directions at once by moving the joystick diagonally.

Home

The searchlight can be returned to a pre-set home position. By default, this is dead ahead with the beam level although different positions can be programmed as described below. To send the searchlight to the home position switch the panel off then press the LAMP button.

Set New Home Position

To set a new home position move the searchlight to the new desired home position. Switch the panel off then press the joystick down to its limit and press the lamp button. The current position will now be the new home position.

Set Motion Limit (only available when Remote Focus is fitted)

The searchlight travel can be limited in either axis or either direction. To set a new limit switch the panel on and move the searchlight to the desired limit position. Switch the panel off then press and hold the focus button whilst moving the joystick full travel in the direction of the desired limit. Hold in this position for 4 seconds. For example, to set a limit to the tilt up motion; -

1. Switch panel on and drive the searchlight to desired tilt up limit position.
2. Switch panel off.
3. Press and hold the FOCUS button and hold joystick in the full up position for 4 seconds.
4. Tilt up motion will now be inhibited above the current position.

Clear Motion Limits

Motion limits as set above can be cleared by switching the panel off then pressing and holding the focus button and lamp buttons together for 10 seconds.

Adjusting Panel Illumination

The panel illumination and indicators intensity can be adjusted to suit ambient light levels. To adjust the intensity, switch the panel on then switch it off with the PANEL button and keep the PANEL button pressed. To increase intensity, move the joystick to the right. To decrease move to the left. Note that the panel button must be kept depressed whilst the joystick is moved. All indicators will illuminate whilst adjustments are performed. Adjustment is complete when the panel button is released.



6.1 - FBUS Data & Panel Addresses

The Francis bus (FBUS) is a custom communication protocol based on RS485 two wire bi-directional communication hardware. The system provides a simple bi-directional link between searchlights and control panels. The system allows given panels to communicate with different searchlights and allows several panels to communicate with the same searchlight.

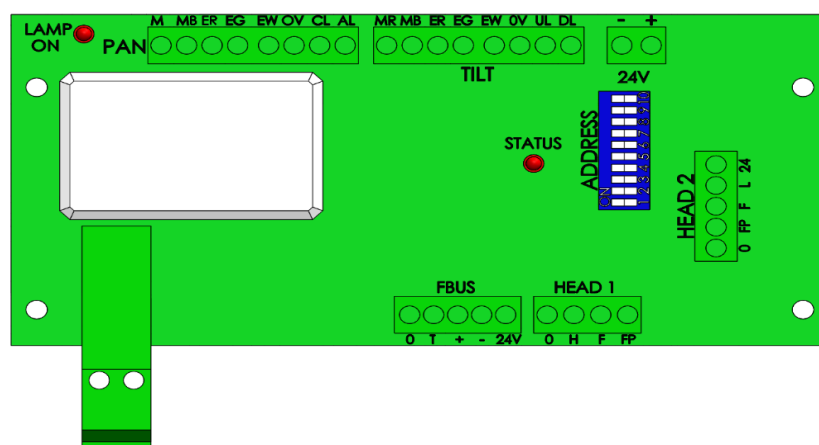
FBUS Address Switches

Setting Searchlight Address Value

The searchlight address is set using the Dip switches on the Speed Controller PCB located inside the Gearbox Assembly (see drawing C30355). With the address switches using simple binary input.

Each switch has a binary value as details below; -

Dip Switch	Searchlight
10	1
9	2
8	4
7	8
6	16



If only 1 Searchlight is used, then all switches will be set to off.

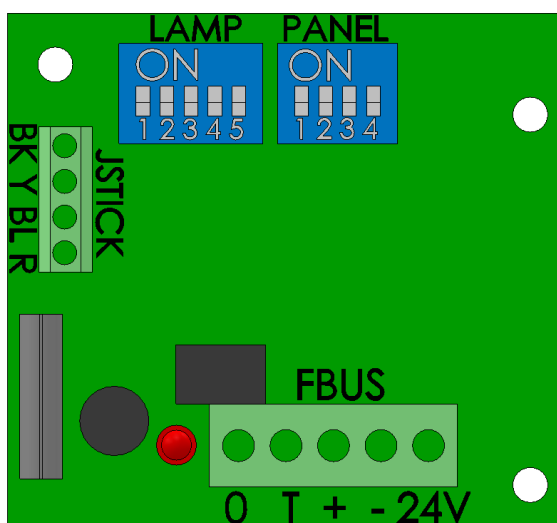
The address value is the sum of the numbers above which are active when the switch is on.

For example, if switches 8 and 10 are on, and all others are off, the address value would be 5.

Note that switches 1-3 are not used for address selection and should be switched off.

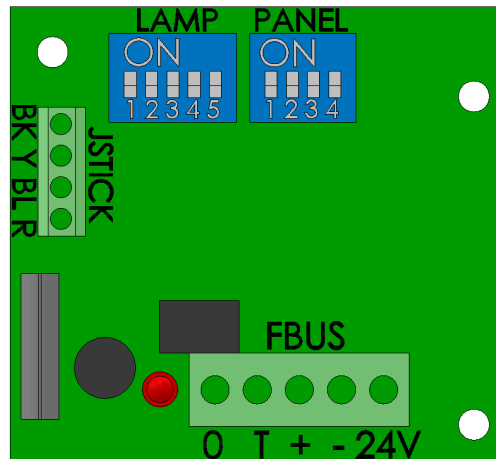
Standard Control Panel – Searchlight (Lamp) Address

Dip Switch	Searchlight
1	16
2	8
3	4
4	2
5	1



Standard Control Panel – Control Panel Address

Dip Switch	Control Panel
1	8
2	4
3	2
4	1



EXAMPLES

Standard control panel – panel address set to 5

Switch 1 = Off

Switch 2 = On (Value 4 added to address)

Switch 3 = Off

Switch 4 = On (Value 1 added to address)

$$4 + 1 = 5$$

Speed control card - lamp address set to 11

Switch 6 = Off

Switch 7 = On (Value 8 added to address)

Switch 8 = Off

Switch 9 = On (Value 2 added to address)

Switch 10 = On (Value 1 added to address)

$$8 + 2 + 1 = 11$$

ADDRESSING SYSTEM

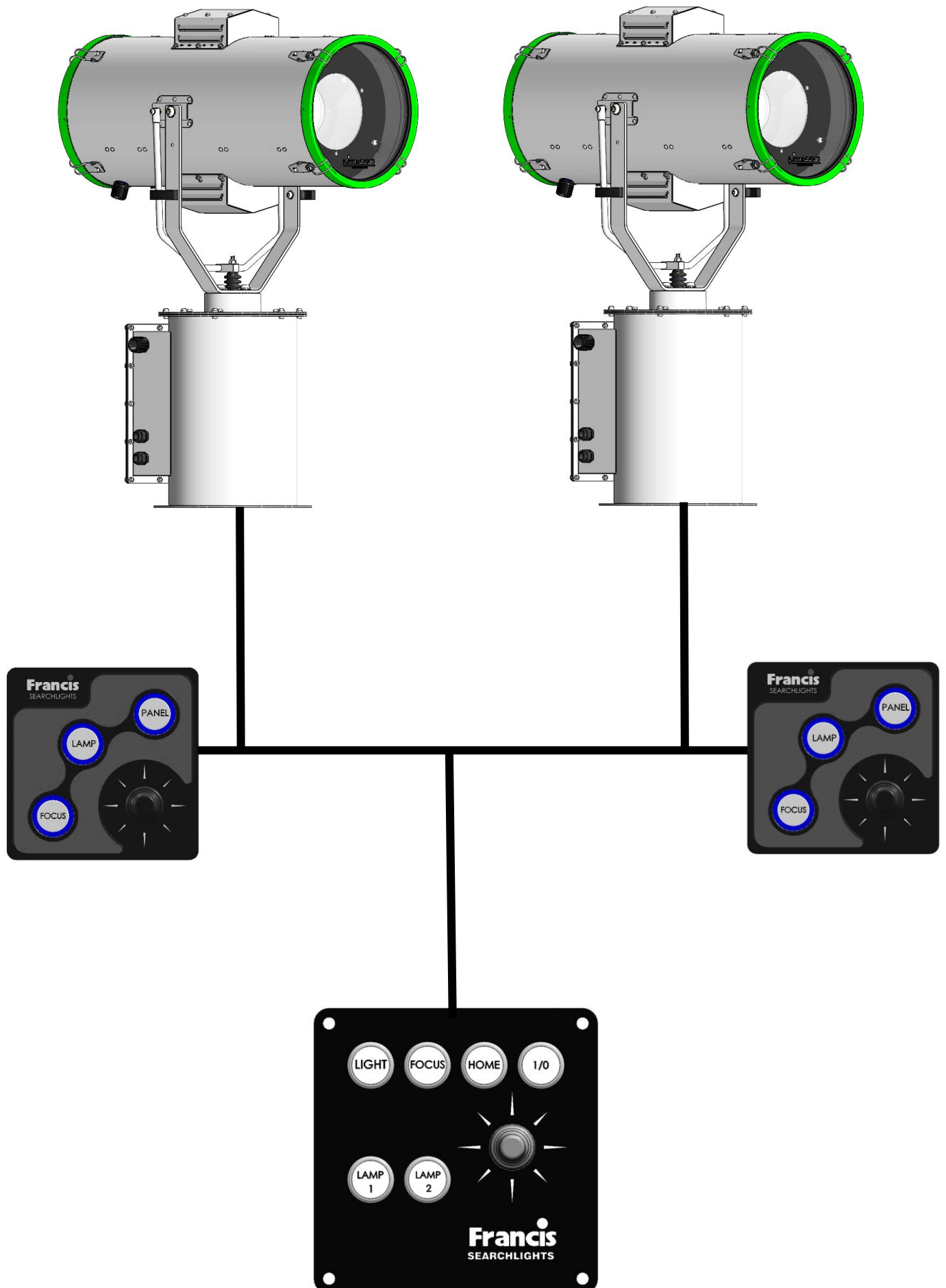
Every searchlight must have a unique address. The addresses should be sequential and should start from zero. If there were three searchlights in a system the addresses should be set to 0, 1 and 2.

Control panel – panel addresses use the same system being sequential and start from zero.

It is essential that all panels have a unique address with no duplication however note that searchlights and panels can be the same address. For example, on a system with two panels and two searchlights, the panel addresses will be 0 and 1 and the lamps addresses will be 0 and 1.

Control panel lamp addresses are defined by the system configuration. If two panels are used to control the same searchlight, they must still have individual panel addresses, but the lamp addresses can be set to the same address value as the searchlight which is to be controlled. Any number of panels can control the same lamp.

Multiple Searchlights, Control Panels and Master Control Panel



7 – Fault Finding

7.1 Problems at Installation

- If the searchlight completes the Self-Test, e.g., Pan left, Tilts down then returns to centre and the LEDs on the joystick panel are not illuminate, then please check the 4 data cables connections on the FBUS connector located on the back of the control panel assembly, as these data cables could be swapped around, you can check the voltages on the 4 connections, you should get as shown below.
 - 0 & + = 3.9v DC
 - 0 & - = 0.9v DC
 - 24 & 0 = 18-24v DC
- If the searchlight completes the Self-Test, e.g., Pan left, Tilts down then returns to centre and the LEDs on the joystick panel are illuminated, but you are unable to control the searchlight via the control panel, then please check the data + & - connections on the FBUS connector located on the back of the control panel assembly, as these data cables could be swapped around.
- If you have more than 1 searchlight in the installation and 2 or more searchlights are moving at the same time in the same direction, then please check the dip switch settings on the speed controller PCB, see **Setting Searchlight Address Value**.

Failure of Lamp to light

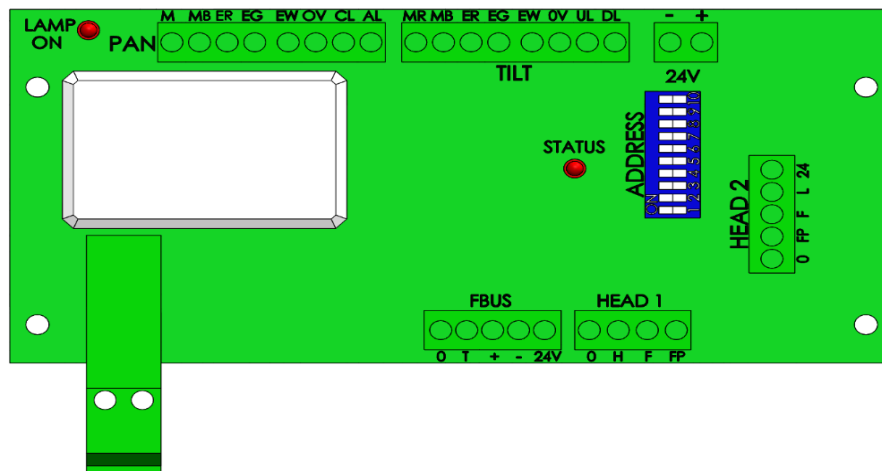
- Check that the supply is connected to the input of the 48v PSU and check all connections as per the wiring diagram. On operation if the laser does not light, switch off mains supply and check all fuses.

7.2 - Problems After Installation

Please note, if the searchlight does not complete the self-test, you will not be able to operate the searchlight in any direction or switch the light on. Please refer to section **7.3 Obtaining Fault Status** below, to confirm the fault.

Once you have confirmed the fault via the control panel, please contact Francis Searchlights for ordering the required parts, sales@francis.co.uk

If the control panel is not communicating with the searchlight and none of the LED's on the control panel are lighting up, then you will need to access the speed controller PCB inside the gearbox (see drawing C30355), to access the speed controller PCB you will need to remove the 14 off M6 screws that hold the gearbox access panel in place, the Status LED located near the top of the card (labelled "STATUS") on the speed controller PCB, shown below.



During faults normal status LED operation is overridden. The status LED will flash red several times with the number of flashes corresponding to the specific fault. If there are multiple faults the LED will flash accordingly with a gap between each fault flash sequence. Fault details are provided on the next page, with the number of flashes indicated on the left.

The Status LED has several functions as detailed below.

Software Version

When power is applied to the speed control card the status LED will flash green. The number of flashes corresponds to the software version.

FBUS Normal operation

When the system is operating from FBUS the status LED will illuminate static green. If used with later control panels the status LED will be on most of the time but will briefly go off every few seconds.

When a valid FBUS data signal is received the LED will switch off momentarily to indicate data reception. If data is continuous the LED will flash green slowly.

If the Status LED does not light up, then please check the 24v DC supply from the PSU within the gearbox, as shown on drawing C30355 Item 7, if there is no output from the PSU then this will need to be replaced.

7.3 - Obtaining Fault Status

Fault codes can be accessed, with the control panel switched off, press the PANEL button and keeping the PANEL button pressed for 10 seconds. Fault codes are indicated by the PANEL button flashing several times related to the fault. Fault codes are detailed below. If more than one fault is present the PANEL button will indicate them in sequence.

1. Pan Limit. – Either of the pan limit switches operated. Note that this may not actually be a fault. The LED will flash when a limit switch is operated under normal circumstances i.e., the lamp is at the limit of travel. This will also indicate when a variable limit is reached.
2. Tilt Limit. – Either of the tilt limit switches operated. Note that this may not actually be a fault. The LED will flash when a limit switch is operated under normal circumstances i.e., the lamp is at the limit of travel. This will also indicate when a variable limit is reached.
3. Pan motor trip. – The pan motor is taking excessive current or has a short circuit. The pan motor will be disabled. To reset, press lamp button.
4. Tilt motor trip. – The tilt motor is taking excessive current or has a short circuit. The tilt motor will be disabled. To reset, press lamp button.
5. Focus motor trip. – The focus motor is taking excessive current. The motor will be disabled for a period when this occurs. Fault indication will remain until power is removed or the fault is corrected.
6. FBUS interface over current. – The speed control card supplies 24VDC to the remote-control panels. The supply is protected by a self-resetting PTC fuse. 6 flashes indicate the fuse has tripped.
7. Anti-condensation heater output over current. – The 24VDC anti condensation heater output is taking excessive current. The heater output will switch off. To restore this output, remove the supply from the speed control card for a period.
8. Limit Switch Error. Some lamp types do not use all or some limit switches. If an invalid limit switch input is detected it is probable the speed control card is set to the wrong product or there is a wiring error.
9. Datum Error. The start-up datum system has not completed correctly.
10. Product type not set or corrupt. The product type has not been set, has been set incorrectly or is corrupt.
11. Supply voltage out of tolerance. The 24V supply is outside the range 18-30V.

8 - Maintenance and Servicing

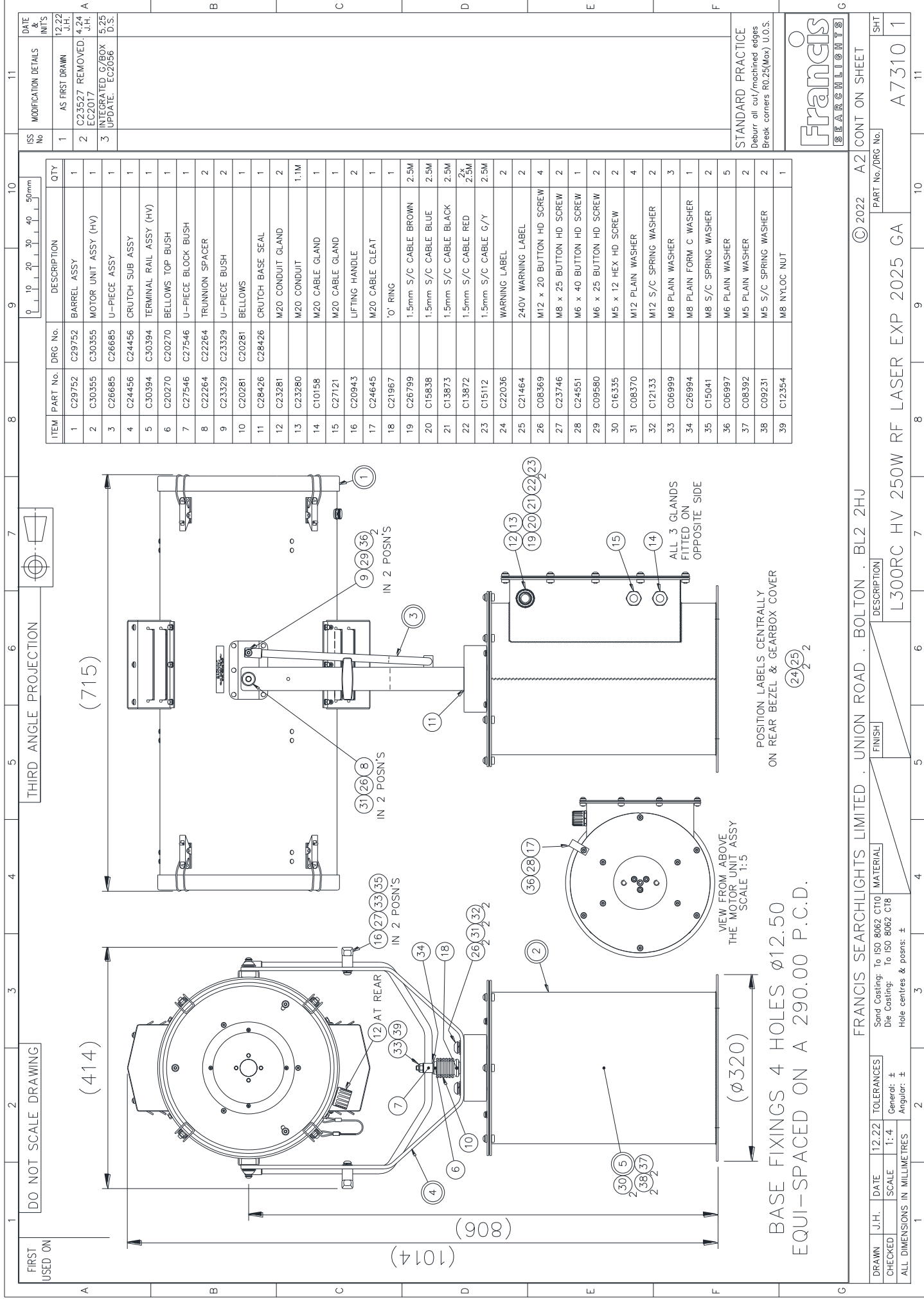
To prolong the service life and performance of your searchlight, the following maintenance guidelines are recommended:

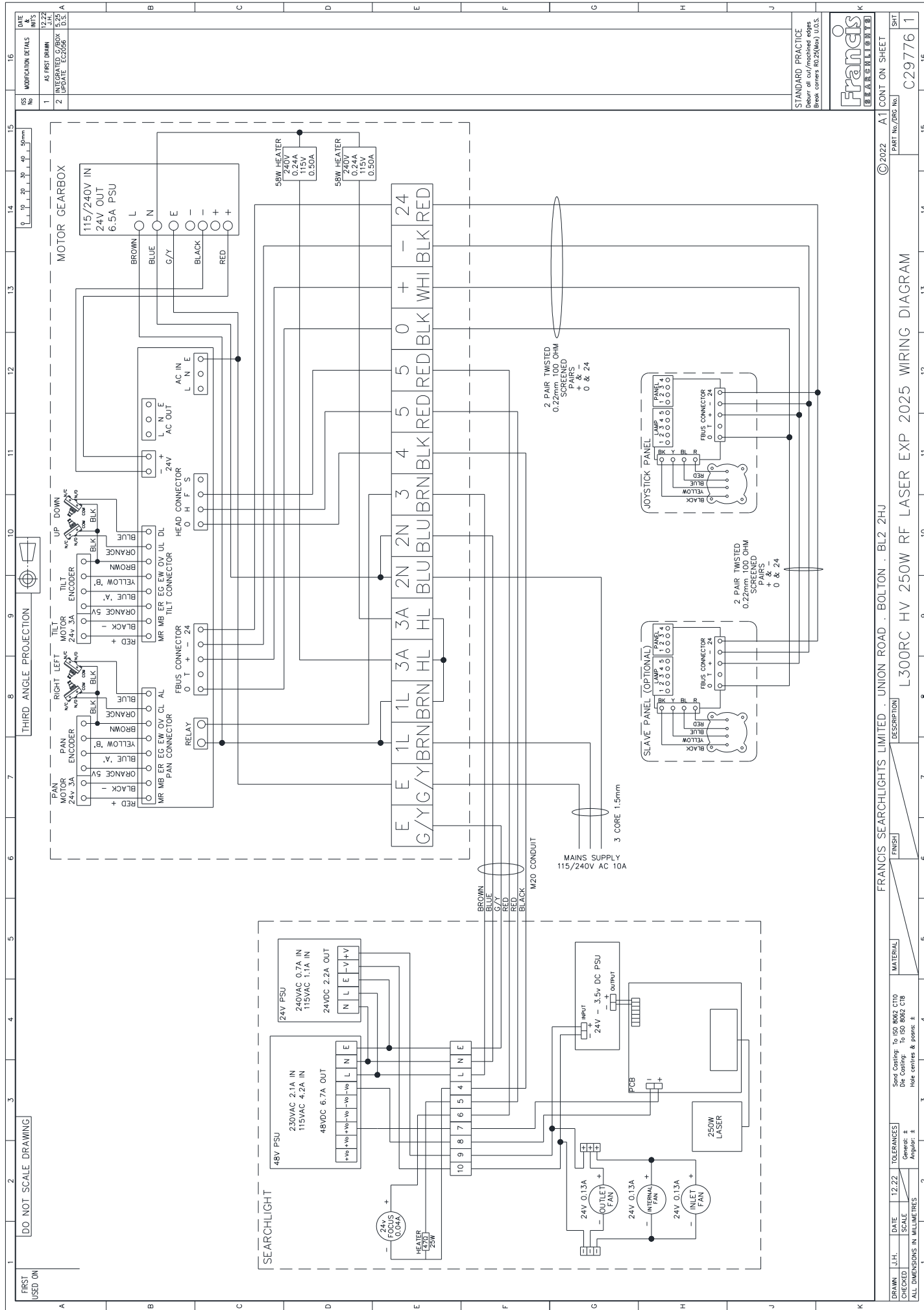
- Maintenance checks should be conducted before every voyage or at least every three months.
- Before checking, disconnect the equipment from the supply.
- Visually inspect the condition of the equipment.
- Any major or minor structural damage should be rectified immediately to reduce sympathetic wear.
- After inspection it may be necessary to clean the inside of the searchlight. The following procedure should be adhered to:
 - Remove the front bezel.
 - Clean the front glass inside and out using a proprietary glass cleaner.
 - Clean the lenses if required.
- It is advisable to check all seals and gaskets for signs of degradation. Renew if necessary.
- The searchlight is fitted with a breather unit. This ensures a steady airflow to prevent any vacuum forming within the barrel.
- Upon completing all maintenance requirements, the searchlight should be tested for full working order (approximately 20 minutes).

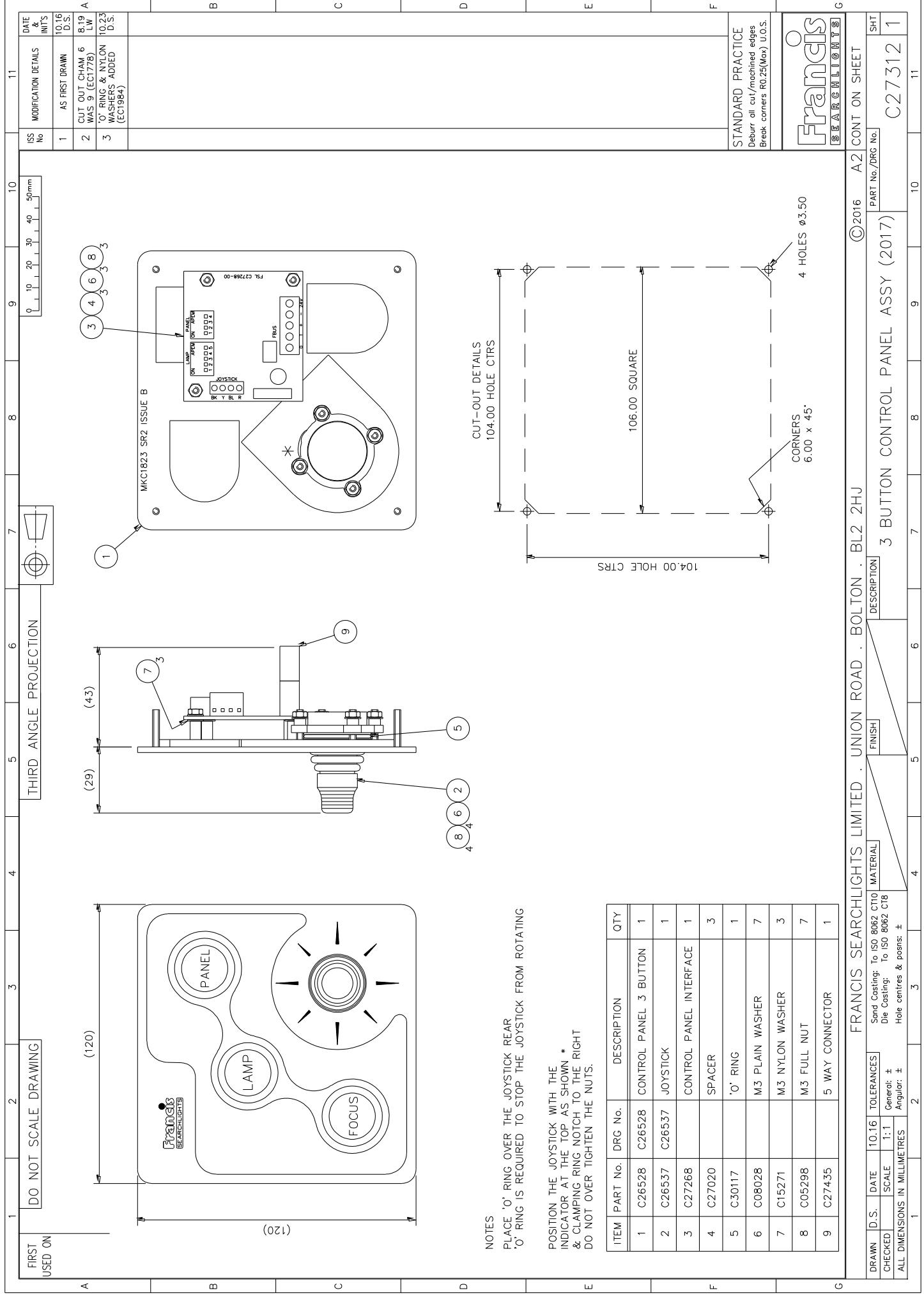
If in any doubt as to the correct servicing procedures to adopt, please contact your distributor/agent or Francis who will be able to advise the best course of action for your product.

9 - Wiring Diagram & General Assembly

Drawing No:	Description
A7310	L300RC HV 250w RF Laser Explorer General Assembly
C29776	Wiring Diagram HV
C27312	Joystick Panel Assembly Remote Focus
C30394	Terminal Rail Assembly HV
C30503	Laser Replacement Instructions
C29752	Barrel Assembly
C30355	Gearbox Assembly 115/240v








DO NOT SCALE DRAWING

THIRD ANGLE PROJ

01020304050mm



FIRST USED ON

A7108

2025

L300RC

DATE

1.25

SCALE

1:1

DRAWN

CHECKED

ALL DIMENSIONS IN MILLIMETRES

ISS No

1

2

MODIFICATION DETAILS

AS FIRST DRAWN

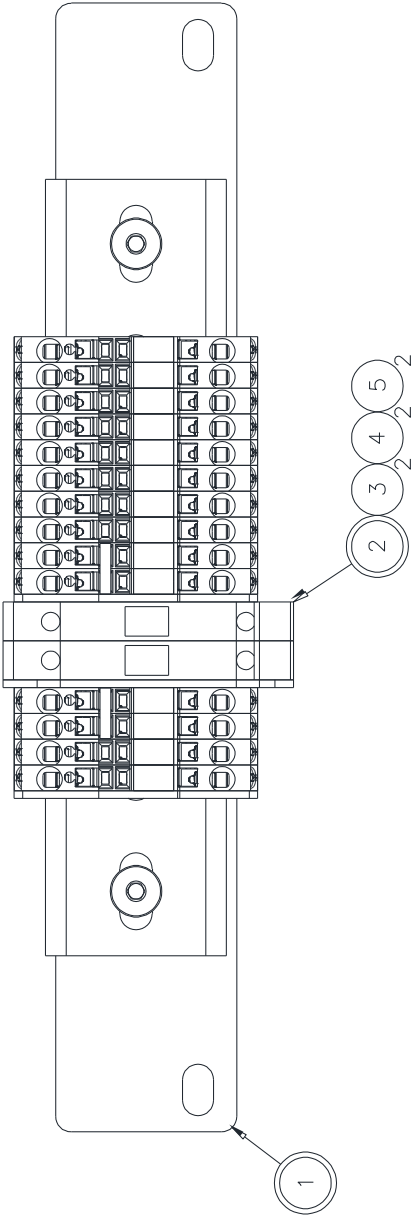
RE-DESIGNED

DATE & INITS

1.25 D.S.

5.25 D.S.

ITEM	PART No.	DRG No.	DESCRIPTION	QTY
1	C30395	C30395	TERMINAL RAIL BKT SUB ASSY	1
2	C30429	C30429	GEARBOX DIN RAIL ASSY	1
3	C09895		M5 x 10 BUTTON HD SCREW	2
4	C08392		M5 PLAIN WASHER	2
5	C09231		M5 S/C SPRING WASHER	2



STANDARD PRACTICE

Deburr all cut/machined edges

Break corners R0.25(Max) U.O.S.

TOLERANCES U.O.S: -

General: ±

Angular: ±

Hole centres & posns: ±

Sand Casting: To ISO 8062 CT10

Die Casting: To ISO 8062 CT8

Francis

SEARCHLIGHTS

FRANCIS SEARCHLIGHTS LIMITED, UNION ROAD, BOLTON, BL2 2HJ

©2025

A3

CONT ON SHEET

DRAWN

CHECKED

ALL DIMENSIONS IN MILLIMETRES

D.S.

DATE

SCALE

MATERIAL

1.25

1:1

FINISH

DESCRIPTION

TERMINAL RAIL ASSY HV

C30394

PART No./DRG No.

SHT

C30394

1

Technical drawing showing the assembly steps for the 250W Laser Module Replacement Instructions. The drawing includes a top view of the module assembly and a side view of the module assembly.

STEP 1 TO STEP 5

STEP 6

STEP 7

STEP 8

STEP 9

STEP 10

STEP 11

STEP 12

STEP 13

STEP 14

STEP 15

STEP 16

STEP 17

STEP 18

STEP 19

STEP 20

STEP 21

STEP 22

STEP 23

STEP 24

STEP 25

STEP 26

STEP 27

STEP 28

STEP 29

STEP 30

STEP 31

STEP 32

STEP 33

STEP 34

STEP 35

STEP 36

STEP 37

STEP 38

STEP 39

STEP 40

STEP 41

STEP 42

STEP 43

STEP 44

STEP 45

STEP 46

STEP 47

STEP 48

STEP 49

STEP 50

STEP 51

STEP 52

STEP 53

STEP 54

STEP 55

STEP 56

STEP 57

STEP 58

STEP 59

STEP 60

STEP 61

STEP 62

STEP 63

STEP 64

STEP 65

STEP 66

STEP 67

STEP 68

STEP 69

STEP 70

STEP 71

STEP 72

STEP 73

STEP 74

STEP 75

STEP 76

STEP 77

STEP 78

STEP 79

STEP 80

STEP 81

STEP 82

STEP 83

STEP 84

STEP 85

STEP 86

STEP 87

STEP 88

STEP 89

STEP 90

STEP 91

STEP 92

STEP 93

STEP 94

STEP 95

STEP 96

STEP 97

STEP 98

STEP 99

STEP 100

STEP 101

STEP 102

STEP 103

STEP 104

STEP 105

STEP 106

STEP 107

STEP 108

STEP 109

STEP 110

STEP 111

STEP 112

STEP 113

STEP 114

STEP 115

STEP 116

STEP 117

STEP 118

STEP 119

STEP 120

STEP 121

STEP 122

STEP 123

STEP 124

STEP 125

STEP 126

STEP 127

STEP 128

STEP 129

STEP 130

STEP 131

STEP 132

STEP 133

STEP 134

STEP 135

STEP 136

STEP 137

STEP 138

STEP 139

STEP 140

STEP 141

STEP 142

STEP 143

STEP 144

STEP 145

STEP 146

STEP 147

STEP 148

STEP 149

STEP 150

STEP 151

STEP 152

STEP 153

STEP 154

STEP 155

STEP 156

STEP 157

STEP 158

STEP 159

STEP 160

STEP 161

STEP 162

STEP 163

STEP 164

STEP 165

STEP 166

STEP 167

STEP 168

STEP 169

STEP 170

STEP 171

STEP 172

STEP 173

STEP 174

STEP 175

STEP 176

STEP 177

STEP 178

STEP 179

STEP 180

STEP 181

STEP 182

STEP 183

STEP 184

STEP 185

STEP 186

STEP 187

STEP 188

STEP 189

STEP 190

STEP 191

STEP 192

STEP 193

STEP 194

STEP 195

STEP 196

STEP 197

STEP 198

STEP 199

STEP 200

STEP 201

STEP 202

STEP 203

STEP 204

STEP 205

STEP 206

STEP 207

STEP 208

STEP 209

STEP 210

STEP 211

STEP 212

STEP 213

STEP 214

STEP 215

STEP 216

STEP 217

STEP 218

STEP 219

STEP 220

STEP 221

STEP 222

STEP 223

STEP 224

STEP 225

STEP 226

STEP 227

STEP 228

STEP 229

STEP 230

STEP 231

STEP 232

STEP 233

STEP 234

STEP 235

STEP 236

STEP 237

STEP 238

STEP 239

STEP 240

STEP 241

STEP 242

STEP 243

STEP 244

STEP 245

STEP 246

STEP 247

STEP 248

STEP 249

STEP 250

STEP 251

STEP 252

STEP 253

STEP 254

STEP 255

STEP 256

STEP 257

STEP 258

STEP 259

STEP 260

STEP 261

STEP 262

STEP 263

STEP 264

STEP 265

STEP 266

STEP 267

STEP 268

STEP 269

STEP 270

STEP 271

STEP 272

STEP 273

STEP 274

STEP 275

STEP 276

STEP 277

STEP 278

STEP 279

STEP 280

STEP 281

STEP 282

STEP 283

STEP 284

STEP 285

STEP 286

STEP 287

STEP 288

STEP 289

STEP 290

STEP 291

STEP 292

STEP 293

STEP 294

STEP 295

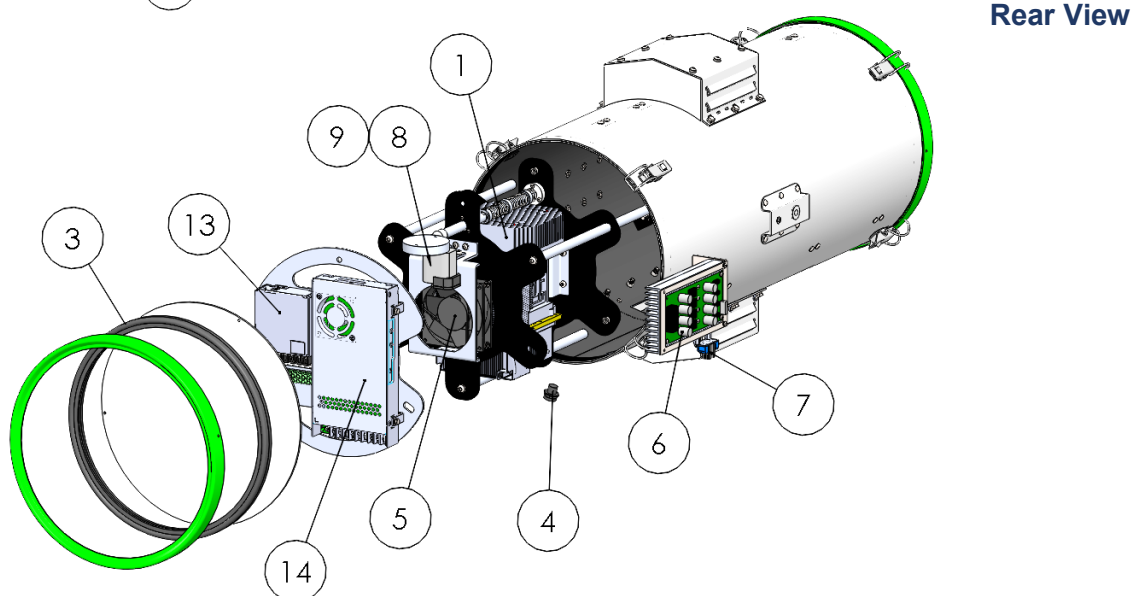
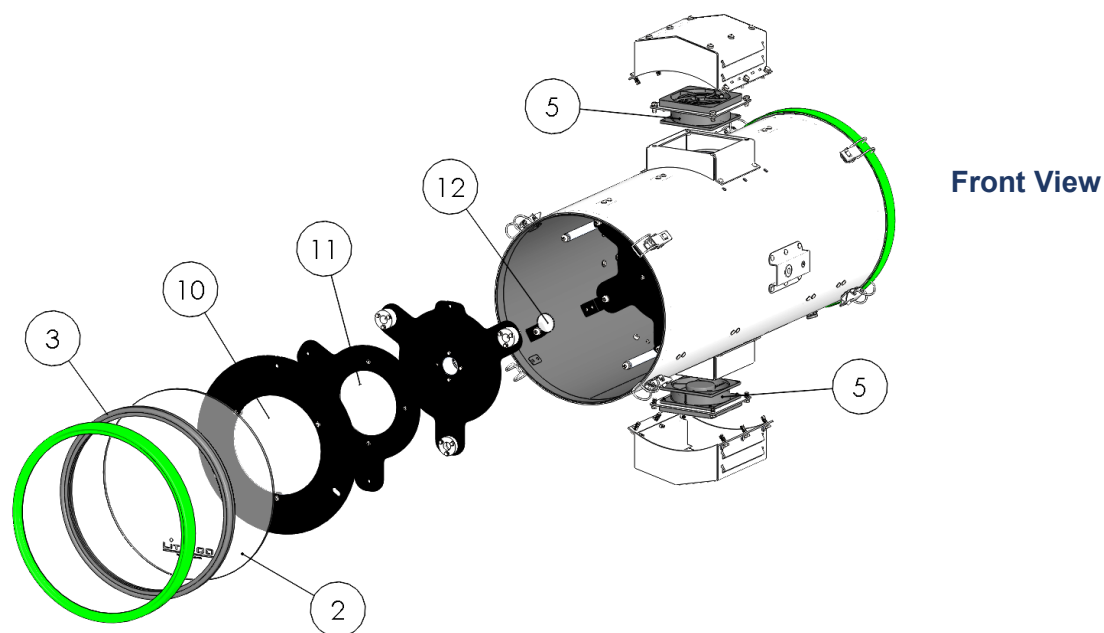
STEP 296

STEP 297

STEP 298

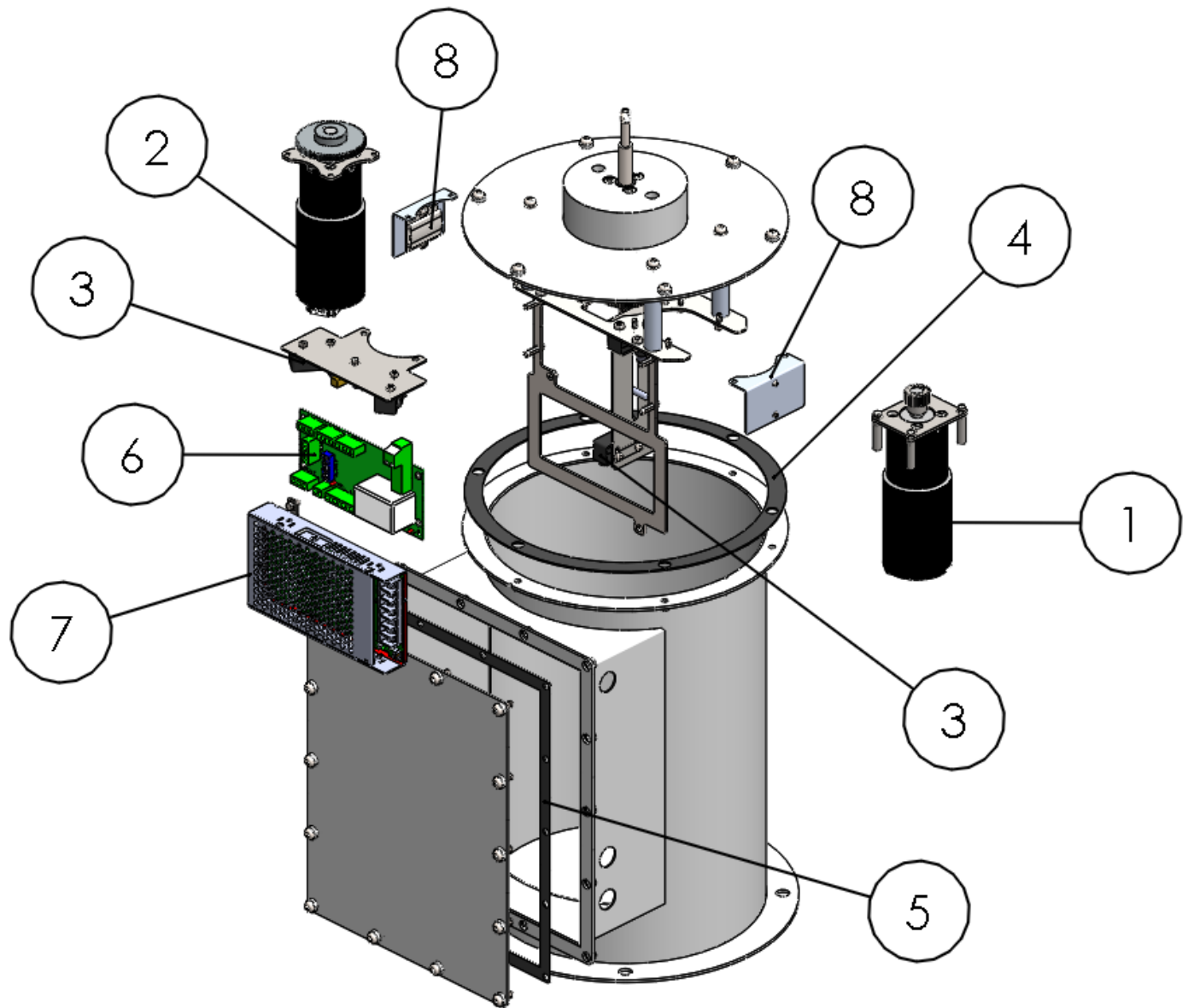
STEP 299

C29752 Barrel Assembly (Front and Rear view)



Item Number	Part Number	Description	Quantity
1	C29757-00	250W Laser Module Assembly	1
2	C20645-00	Front Glass	1
3	C20567-00	Front & Rear Bezel Gasket	2
4	C22268-01	Breather Assembly	1
5	C27820-00	Fan	3
6	C29758-00	PCB Board	1
7	C29759-00	Step Down Transformer PCB	1
8	C16410-00	Focus Motor	1
9	C16534-00	Focus Motor Cover	1
10	C29756-00	Front Lens	1
11	C29755-00	Middle Lens	1
12	C29754-00	Rear Lens	1
13	C29033-00	24v PSU	1
14	C29530-00	48v PSU	1

C30355 Gearbox Assembly 115/240v



Item Number	Part Number	Description	Quantity
1	C29501-01	Pan Motor Assembly	1
2	C29500-01	Tilt Motor Assembly	1
3	C29275-00	Micro-switch	4
4	C23234-00	Pedestal Sealing Gasket	1
5	C30361-01	Rear Cover Sealing Gasket	1
6	C29535-01	Speed Controller PCB	1
7	C29162-00	PSU	1
8	C23277-00	Heater 115/240v	2

10 - Spare Parts List

The following spare parts can be ordered directly from the manufacturer:

Part Number	Description
-------------	-------------

Searchlight Spares

C29757-00	250w Laser Module Assembly
C20645-00	Front Glass
C20567-00	Front & Rear Bezel Gasket
C22268-01	Breather Assembly
C27820-00	Fan
C29758-00	PCB Board
C29759-00	Step Down Transformer PCB
C16410-01	Focus Motor
C16534-00	Focus Motor Cover
C29756-00	Lens Ø160mm
C29755-00	Lens Ø120mm
C29754-00	Lens Ø30mm
C29033-00	24v PSU
C29530-00	48v PSU
C20281-00	Bellows

Motor Gearbox Spares

C29501-01	Pan Motor Assembly
C29500-01	Tilt Motor Assembly
C29275-00	Micro switch
C23234-00	Pedestal Sealing Gasket
C29535-01	Speed Controller PCB
C30361-00	Rear Cover Sealing Gasket
C29162-00	PSU
C23277-00	Heater 115/240v

Joystick Panel Spares

C26537-01	Joystick
C27268-00	Joystick Controller PCB

To prolong the life and performance of your product, we recommend that you only specify Francis Searchlights spare parts. This will ensure that any warranties on your equipment will not be invalidated.

When ordering spare parts please contact the Sales Department at Francis Searchlights Limited sales@francis.co.uk . Please always quote the searchlight model and serial number, which you can find on the nameplate located on the lid of the junction box. This will enable a fast response to your spares' requirements.