



APPLICATION

The new Francis Bus Explorer range of variable speed Remote Controlled Searchlights incorporate the design features required to successfully operate searchlights in the most demanding product operating environments on land and sea.

Francis Searchlights have developed and improved all remote controlled searchlights across the range still further by adding full variable speed, a new modern and sleek joystick control panel, using membrane and LED technology, offering Bus Control.

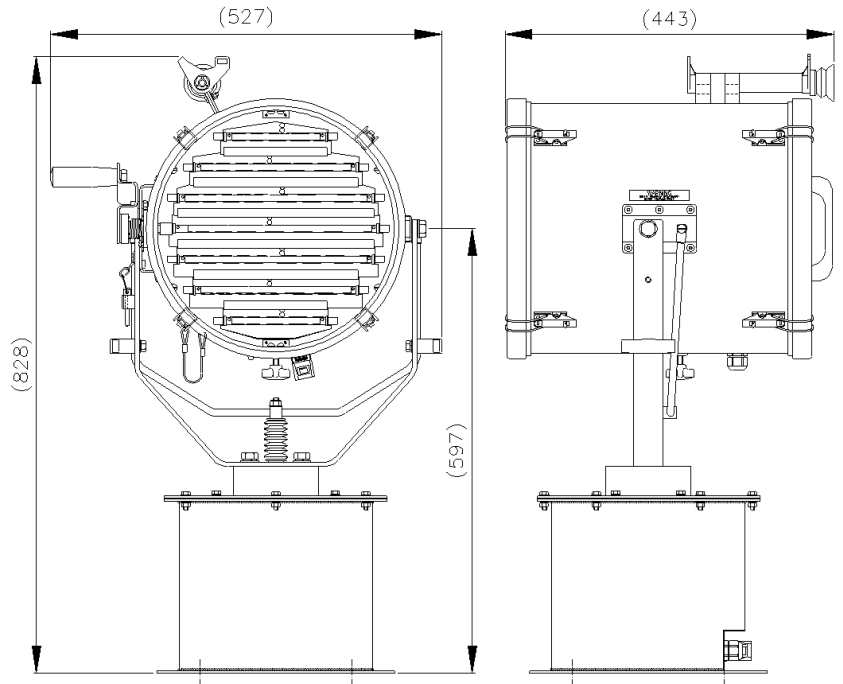
The FSP300RC Signalling range of searchlights is suited to vessels that require a permanently installed day/night visual signalling searchlight.

Standard features include remote focus mechanism and combined tubular and V sights. The well designed shutter mechanism can be locked in the 'open' position, allowing the unit to be used as a searchlight.

The high quality equipment will perform in the most demanding product operating environments on land and sea.

SPECIFICATION

- Toughened super clear Optiwhite front glass.
- High quality shutter mechanism for morse code
- Signaling range minimum of 10 miles / 16 km (daylight)
- Signalling speed of 12 words per minute
- Parabolic glass reflector
- Constructed from marine grade materials and fixings.
- Powder coated and stove enamel paint finish.
- Tungsten halogen lamp
- Removable front and rear bezels
- Pan rotation 365°.
- Tilt elevation control $\pm 35^\circ$.
- Operational temp -50°
- Remote lamp focus 2° spot to 10° flood.
- Searchlight weight 35Kgs
- Variable speed LED joystick, with auto home position.
- RS485 connectivity. Dimmable Control Panel.
- Variable Rotation Speed 1 to 19°/sec (Pan).
- Variable Elevation Speed 1 to 6°/sec (Tilt).
- Heater fitted in gearbox & optional in barrel.



ALL DIMENSIONS IN MILLIMETRES

Base fixing details:
4 holes 12.5 \varnothing equi-spaced on a 290mm PCD
Joystick panel 120 x 120mm (106 x 106mm cutout)

Part Numbers

Type	Supply	Part No
FSP300RC	24v	A7235
FSP300RC	115/230v	A7236
Waterproof Cover		C10233-00
Blue Filter Assy		C23428-00
Green Filter Assy		C23429-00
Red Filter Assy		C21867-00

Optional Controls:

Program Record Function
Computer Control Software
Azimuth LED Control Panel
Master Control Panel (control up to 10 Searchlights)
Slave Control Panels (with full control)
Fiber Optic/TCP/IP Connections

VAC	Lamp life	Range @ 1 Lux	PBCP X 1000	Div	Watts	Lamp No
24v	2000 hrs	1298m	1685	3°	250w	D4695
24v	300 hrs	1563m	2442	3°	250w	D9851
230v	750 hrs	950m	902	5°	650w	D1813
115v	750 hrs	1049m	1100	5°	1000w	D1809
230v	750 hrs	1017m	1034	5°	1000w	D6715