



APPLICATION

Designed to compliment the already highly successful LH230 150w, the LH300 575w will undoubtedly prove invaluable on projects where a greater range and light output is required.

Again produced in high quality Stainless Steel. Whether to be used as an uplight or downlight, this product has many uses in the illumination of buildings, statues, spires and garden features.

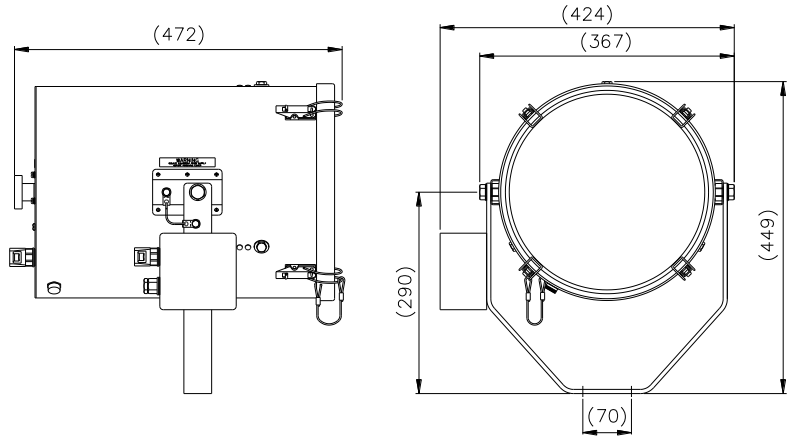
Available for use with 575w lamps, it can also be used in conjunction with a reeded glass in order to collimate the light, thus providing a uniform floodlit effect.

This new development provides a substantial increase in performance and with lamp life being an all important issue, this unit provides 3,000 hours.

All round a high performer, being more environmentally friendly, offering exceptional build quality, and a reduction in maintenance. Comes complete with removable spill rings.

SPECIFICATION

- Toughened super clear Optiwhite front glass.
- Parabolic formed deep dish aluminum reflector.
- Constructed from marine grade materials and fixings.
- Powder coated and stove enamel paint finish.
- Spill Rings to prevent unwanted glare & stray light.
- External lamp focus adjustment.
- Sealing – IP66 Searchlight.
- Searchlight weight 10kgs, PSU 8.5Kg
- Supplied with stainless steel security bracket and safety cable.



ALL DIMENSIONS IN MILLIMETRES

Base fixing details:
Deck 3 holes Ø11.0 equi-spaced on a 154 PCD
Crutch Fixing 2 holes Ø 12.50mm at 70mm centres

Part Numbers

Type	Supply	Part No
LH300 575w	230v	A2859
Control Gear Assy 575w	230v	C21294-01

Useful Information for 70w (based on divergence at 7°)

At 25m, provides beam diameter of 3.06m @ 18,627 lux
At 50m, provides beam diameter of 6.12m @ 4,657 lux
At 100m, provides beam diameter of 12.24m @ 1,164 lux

VAC	Lamp life	Range @ 1 Lux	PBCP X 1000	Div	Watts	Lamp No
230v	3,000hrs	3412m	11,642	7°	575w	D23720