

L380RC Halogen Remote Control Searchlight

User / Installation Manual

Product Part Number:

A7110 – L380RC 115/240v Variable Speed Remote Control Searchlight

A7111 – L380RC RF 115/240v Variable Speed Remote Control Searchlight

A7112 – L380RC 24v Variable Speed Remote Control Searchlight

A7113 – L380RC RF 24v Variable Speed Remote Control Searchlight

PLEASE NOTE!

Please read this manual before installation.



www.francis.co.uk

CONTENTS

1. Introduction
2. Safety Precautions
3. Technical Information
4. Unpacking and Installation Instructions
5. Electrical Installation
6. Start-up and Operating
 - 6.1. FBUS Data & Panel Addresses
7. Fault Finding
 - 7.1. Problems After Installation
 - 7.2. Obtaining Fault Status
8. Maintenance and Servicing
9. Wiring Diagram & General Assembly
10. Spare Parts List

General Information:

Francis Searchlights Ltd

Union Road, Bolton, BL2 2HJ

United Kingdom

T: 00 44 (0)1204 558 960

E: Sales@francis.co.uk

W: www.francis.co.uk

1 – Introduction

It is imperative that this manual is read carefully and understood before installing your equipment. For your future reference please keep this manual in a safe place.

Thank you for specifying a product from the Francis Searchlights range. All Francis products are designed to give complete customer satisfaction and are manufactured to the highest engineering standards to ensure optimum performance and service life.

The Francis LITE range combines features proven over many years in the most hazardous conditions in both marine and land installations.

To prolong the life and performance of your product, we recommend that you only specify Francis Searchlights spare parts. This will also ensure that any warranties on your equipment will not be invalidated. Information on spares ordering and parts is provided in this manual.

Should you ever need to contact Francis Searchlights Ltd. regarding your equipment, please always quote the Product Number and Serial Number of the product you have, this is located on the name plate, inside the front of the barrel to the right.

In order that the searchlight operates correctly it is imperative that competent personnel are responsible for the installation, operation, and servicing of this equipment. Failure to adhere to this advice may cause premature failure or incorrect operation of the searchlight, which may damage the equipment or cause personal injury.

2 – Safety Precautions

The following instructions must be adhered to, to ensure a safe working environment and the safety of the user.

Note: When unpacking or manoeuvring the searchlight into its fixing position, suitable lifting points must be used to prevent damage to the equipment or personal injury.

- Only suitably qualified personnel may install the products.
- Prevent rain, snow, condensation, and water droplets from contacting the lamp as this may cause bulb failure and possible shattering.
- Halogen bulbs run with a high internal pressure more than atmospheric. Whilst the construction is inherently strong, there is a slight risk of the bulb shattering.
- Never look directly into an illuminated searchlight as this may cause severe damage to eyesight. If it is necessary to inspect a lamp whilst in operation, always wear suitable protective goggles.
- Should it be necessary to examine the lamp with the front bezel removed, always use a protective shield and wear goggles to ensure a safe working environment.
- Never attempt to clean a lamp whilst in use.
- Searchlights get hot. Never touch the unit when lit and always allow 15 to 20 minutes for cooling down after turning the searchlight off.
- Never place anything on or cover the searchlight when in use.
- Ensure the lamp has cooled sufficiently before removal.
- If undue force appears necessary to remove the lamp, the equipment should be inspected by a competent person or contact the manufacturer.
- When breaking a lamp for disposal, care must be taken to ensure the glass fragments are safely contained. This operation must be performed out of doors in free air. In all circumstances refer to the lamp manufacturer's instructions packed with the lamp.
- Due to the vast range of lamps available it may appear possible that more powerful lamps can be used in the equipment than for which it was designed. Even when the unit will physically accept a higher wattage or voltage lamp, this substitution is not recommended and is dangerous. This action will also void any warranties on the equipment.

Always refer to the lamp manufacturer's technical data when dealing with lamps.

3 – Technical Information

| | | | |
|--|---|----------|---------|
| Electrical | | | |
| Input voltage: | 24VDC | 110VAC | 240 VAC |
| Input current: | 10.5A Max | 9.5A Max | 5A Max |
| Wattage: | 250w-1Kw | | |
| Dimensions | | | |
| Height: | 908mm | | |
| Width: | 493mm | | |
| Depth: | 393mm | | |
| Weight: | 31Kgs | | |
| Searchlight Performance | | | |
| Lamp power: | 250-1000w | | |
| Range @ 1 Lux: | 1114-1673m | | |
| Lamp life (approx.) | 300-2000h | | |
| Divergence: | 2.5°-6° | | |
| PBCP (Peak Beam Candle Power): | 1,240,000-2,800,000 cd | | |
| Colour temperature: | 3000K | | |
| Luminous flux: | 5750 - 23500 lumens | | |
| Searchlight movement | | | |
| Pan rotation: | 365° | | |
| Tilt elevation: | Up 35° & Down 40° | | |
| Pan speed: | Variable Speed 1 to 19°/sec | | |
| Tilt Speed: | Variable Speed 1 to 6°/sec | | |
| Material, colour, IP rating | | | |
| Searchlight barrel head: | Stainless Steel BS1449 304S31 | | |
| Gearbox housing: | Stainless Steel BS1449 304S31 | | |
| Crutch: | Stainless Steel BS1449 304S11 | | |
| Paint finish powder coated & stove enamel paint: | Ash Grey BS4800 00A01, Steel Blue RAL5011 | | |
| IP rating: | IP66 | | |
| Operating temperature: | -20°C to +50°C (-50°C on request) | | |
| Certification approval: | | | |
| Lloyds TA: | IEC 60945: 2002 | | |
| Russian Maritime Register of Shipping: | Parts XI & XVII, Part IV | | |
| ISO9001 2015: | Quality Management System | | |

4 – Unpacking and Installation Instructions

The following instructions should be read and fully understood prior to installing the equipment to ensure that the correct procedures are followed, and all safety precautions are observed.

Note: If the equipment has been in storage for a considerable amount of time, it is advisable to conduct a routine maintenance check on all parts before installation.

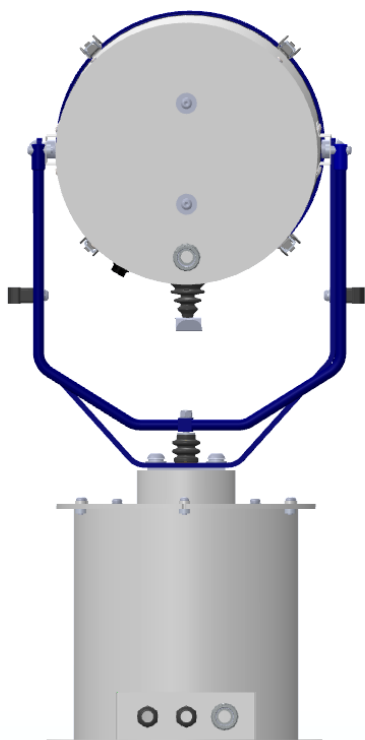
Safety Precautions

This equipment should not be connected to an electrical supply before being installed. Installation procedures should be adhered to, to ensure a safe working environment and reduce the risk of damage or personal injury.

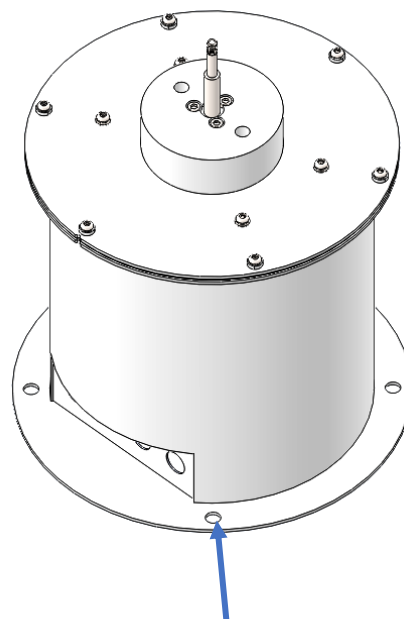
Preparing the Mounting Position

Mark out and drill the fixing holes through the deck. If anti-vibration mounts are to be fitted, the fixing holes for the mounts should also be marked out and drilled. Prior to manoeuvring the searchlight into its' fixing position, the AV mounts should be fitted to the base. When in the desired position, bolt the searchlight firmly down. On an uneven surface it may be necessary to use a suitable sealant such as silicone, to ensure a weatherproofed joint.

Please refer to the drawing C27312 for the Joystick Panel cut out size, which you can find at the back of this manual.



Rear of Searchlight



Base Fixings, 4 Holes Ø12.5
Equally Spaced on a Ø 290.00

5 – Electrical Installation

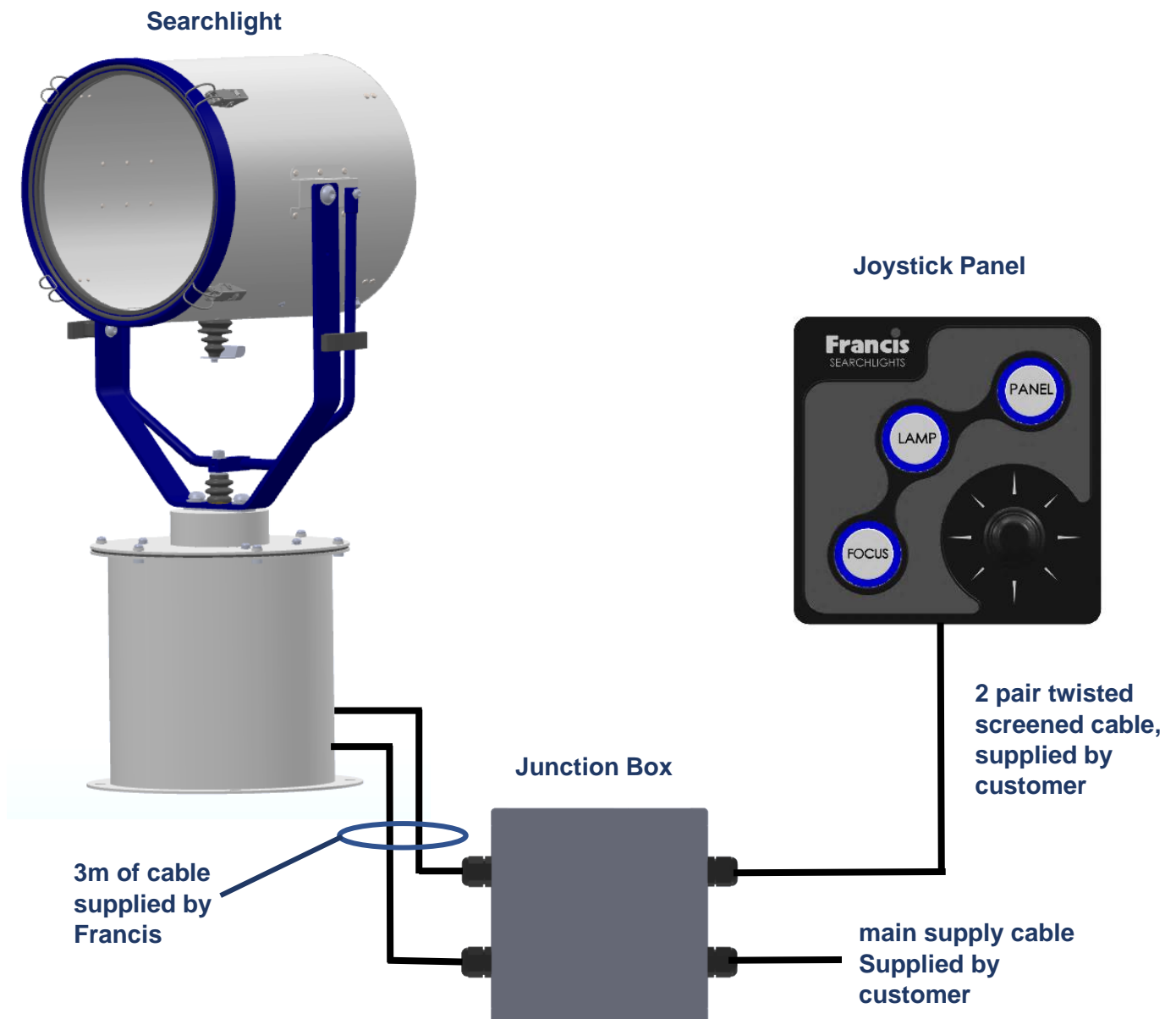
For safety purposes, only competent personnel should perform the electrical installation. All equipment should be installed to current Electrical Regulations and Standards.

Referring to wiring diagram C27422 115/240v or C27423 24v (at the back of the manual), a supply is fed to the junction box, which then provides a common feed to the motor gearbox, searchlight, and joystick panel.

The searchlight has been pre-wired with 3 meters of cable from the motor gearbox to junction box provided. The searchlight head is pre-wired along with the connecting cable to the motor gearbox.

Cables required to be connected by the customer: -

- 2 pair twisted 0.22mm 100ohm screened cable from the joystick panel to the junction box.
- Mains supply cable to the junction box.



To obtain the maximum light output from the searchlight, it is essential that the full operating voltage of the lamp fitted be applied to the lamp holder contacts.

Method of Electrical Connection

- Disconnect the supply before working on the electrical system.
- The searchlight must be connected to a fused electrical supply, using suitably sized cable.
- If the searchlight is located a considerable distance from the supply, provision must be made in the cable size to overcome the voltage drop.

The following table below indicates the maximum length of cable to be used for the supply cable, from the mains supply to the junction box.

| Searchlight | 24v 250w | 115v 1Kw | 230v 1Kw | 230v 650w |
|----------------------------------|-----------------|-----------------|-----------------|-----------------|
| Cable Size (mm ²) | Distance Max | Distance Max | Distance Max | Distance Max |
| 1.5 | 3M | 19M | 85M | 131M |
| 2.5 | 5M | 33M | 143M | 221M |
| 4 | 9M | 52M | 230M | 354M |
| 6 | 13M | 78M | 343M | 528M |
| 10 | 24M | 139M | 605M | 932M |

- Whenever possible cable terminations should be made below deck and with approved terminal devices.
- If a spare auxiliary fuse or circuit breaker is not available, one of the correct type/ratings should be fitted and connected to a positive supply. It is advisable to locate a bus bar or main connection and avoid any direct connection to the supply.
- For 115/240v AC products, the following colour coding system should be used for the customer supply cable:

| | | |
|--------------|---|----------|
| Brown | - | Live |
| Blue | - | Negative |
| Green/Yellow | - | Earth |

Note: This equipment must be earthed.

6 – Start-up and Operating

When fitting the lamp

- Always isolate the equipment from the supply when inserting a lamp.
- Ensure the circuit is suitably fused.
- Ensure the lamp is of the correct power rating and type.
- Check lamp holder is in good condition. If the contacts show any sign of corrosion, replace the lamp holder.
- Check the lamp holder is in a good dry condition. Never allow water to collect in the lamp fitting or contact with the lamp.

To fit the lamp

- Remove the front bezel assembly by operating the safety catch and lifting the catch body.
- For easier access, the light shield/spill ring may be removed by undoing the fasteners.
- Cut open one end of the protective sleeve surrounding the lamp.
- Use the sleeve supplied with the lamp to prevent touching the glass envelope, position the two pins above the holes in the lamp holder.
- Gently push the lamp into the lamp holder and remove the protective sleeve.
- Replace the light shield/spill ring and front bezel assembly, ensuring the safety catch is engaged.

Testing

Upon correct installation and connection to an electrical supply, the equipment can be tested to ensure its' correct performance. A competent person with some knowledge of electrical equipment must carry out this work.

Equipment required: multi-meter with leads & Ammeter.

Using the equation $P=VI$, the approximate power output of the equipment can be calculated in the following way:

- Using the multi-meter, take a voltage reading.
- Using the ammeter, take an amp reading from the live cable to the lamp.
- Multiply these figures together to give an approximate wattage (Power output).

For example:

Using a 24v 250w Tungsten halogen lamp:

Voltage reading = 24v; Amps reading = 10.4 amps

Therefore, Wattage = $24 \times 10.4 = 250$ watts

Start-Up

When the main power is first applied to the searchlight, the searchlight will carry out a self-test, it will Pan to the left limit and Tilt down to the limit, once this is complete, the searchlight will then move to the centre and horizontal, during this please do not try and operate the searchlight while this test is being carried out. Once the searchlight is back at centre the searchlight can then be operated normally, by pressing the Panel button on the control panel.

Operating

Switch On

The panel is activated using the PANEL button. This will illuminate brightly when the panel is active. Alternate operations of the PANEL button will switch the panel on and off.

Lamp Control

When the panel is active pressing the LAMP button will switch the lamp on or off. If the joystick panel is switched off with the PANEL button the lamp will switch off.

Focus Control

The lamp focus can be adjusted using the FOCUS button. Lamp focus will adjust continuously whilst FOCUS is pressed.

Beam Direction

The beam direction can be adjusted using the joystick when the panel is active. Moving the joystick left or right will pan the beam clockwise or anticlockwise. Moving the joystick up or down will move the beam up or down. The speed of movement is proportional to the movement of the joystick. It is possible to move the beam in both directions at once by moving the joystick diagonally.

Home

The searchlight can be returned to a pre-set home position. By default, this is dead ahead with the beam level although different positions can be programmed as described below. To send the searchlight to the home position switch the panel off then press the LAMP button.

Set New Home Position

To set a new home position move the searchlight to the new desired home position. Switch the panel off then press the joystick down to its limit and press the lamp button. The current position will now be the new home position.

Set Motion Limit (only available when Remote Focus is fitted)

The searchlight travel can be limited in either axis or either direction. To set a new limit switch the panel on and move the searchlight to the desired limit position. Switch the panel off then press and hold the focus button whilst moving the joystick full travel in the direction of the desired limit. Hold in this position for 4 seconds. For example, to set a limit to the tilt up motion; -

1. Switch panel on and drive the searchlight to desired tilt up limit position.
2. Switch panel off.
3. Press and hold the FOCUS button and hold joystick in the full up position for 4 seconds.
4. Tilt up motion will now be inhibited above the current position.

Clear Motion Limits

Motion limits as set above can be cleared by switching the panel off then pressing and holding the focus button and lamp buttons together for 10 seconds.

Adjusting Panel Illumination

The panel illumination and indicators intensity can be adjusted to suit ambient light levels. To adjust the intensity, switch the panel on then switch it off with the PANEL button and keep the PANEL button pressed. To increase intensity, move the joystick to the right. To decrease move to the left. Note that the panel button must be kept depressed whilst the joystick is moved. All indicators will illuminate whilst adjustments are performed. Adjustment is complete when the panel button is released.



6.1 - FBUS Data & Panel Addresses

The Francis bus (FBUS) is a custom communication protocol based on RS485 two wire bi-directional communication hardware. The system provides a simple bi-directional link between searchlights and control panels. The system allows given panels to communicate with different searchlights and allows several panels to communicate with the same searchlight.

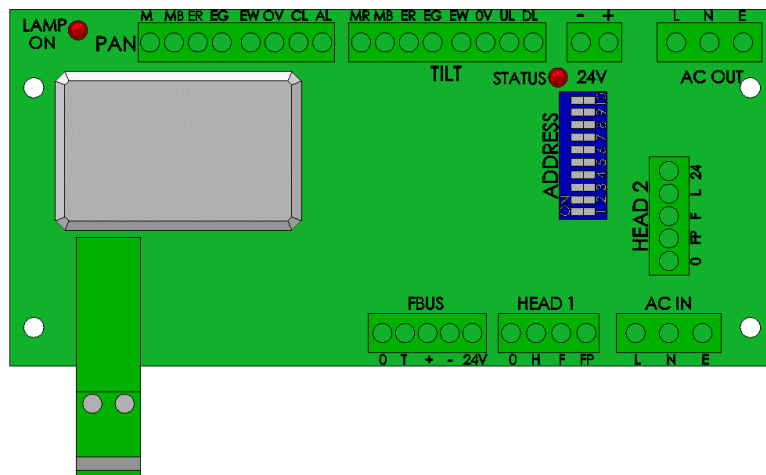
FBUS Address Switches

Setting Searchlight Address Value

The searchlight address is set using the Dip switches on the Speed Controller PCB located inside the Gearbox Assembly (see drawing C29488). With the address switches using simple binary input.

Each switch has a binary value as details below; -

| Dip Switch | Searchlight |
|------------|-------------|
| 10 | 1 |
| 9 | 2 |
| 8 | 4 |
| 7 | 8 |
| 6 | 16 |



If only 1 Searchlight is used, then all switches will be set to off.

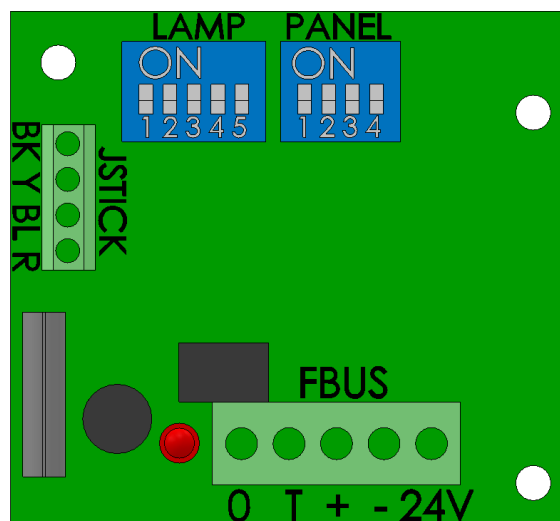
The address value is the sum of the numbers above which are active when the switch is on.

For example, if switches 8 and 10 are on, and all others are off, the address value would be 5.

Note that switches 1-3 are not used for address selection and should be switched off.

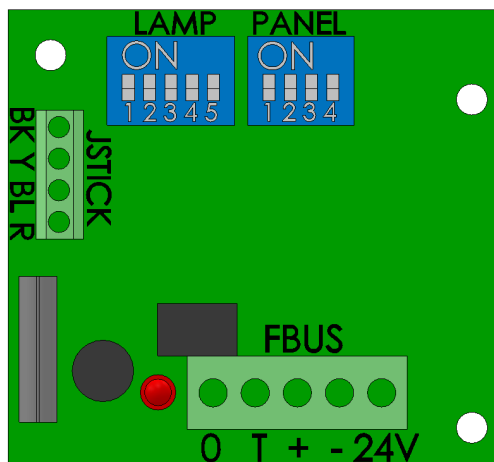
Standard Control Panel – Searchlight (Lamp) Address

| Dip Switch | Searchlight |
|------------|-------------|
| 1 | 16 |
| 2 | 8 |
| 3 | 4 |
| 4 | 2 |
| 5 | 1 |



Standard Control Panel – Control Panel Address

| Dip Switch | Control Panel |
|------------|---------------|
| 1 | 8 |
| 2 | 4 |
| 3 | 2 |
| 4 | 1 |



EXAMPLES

Standard control panel – panel address set to 5

Switch 1 = Off

Switch 2 = On (Value 4 added to address)

Switch 3 = Off

Switch 4 = On (Value 1 added to address)

$$4 + 1 = 5$$

Speed control card - lamp address set to 11

Switch 6 = Off

Switch 7 = On (Value 8 added to address)

Switch 8 = Off

Switch 9 = On (Value 2 added to address)

Switch 10 = On (Value 1 added to address)

$$8 + 2 + 1 = 11$$

ADDRESSING SYSTEM

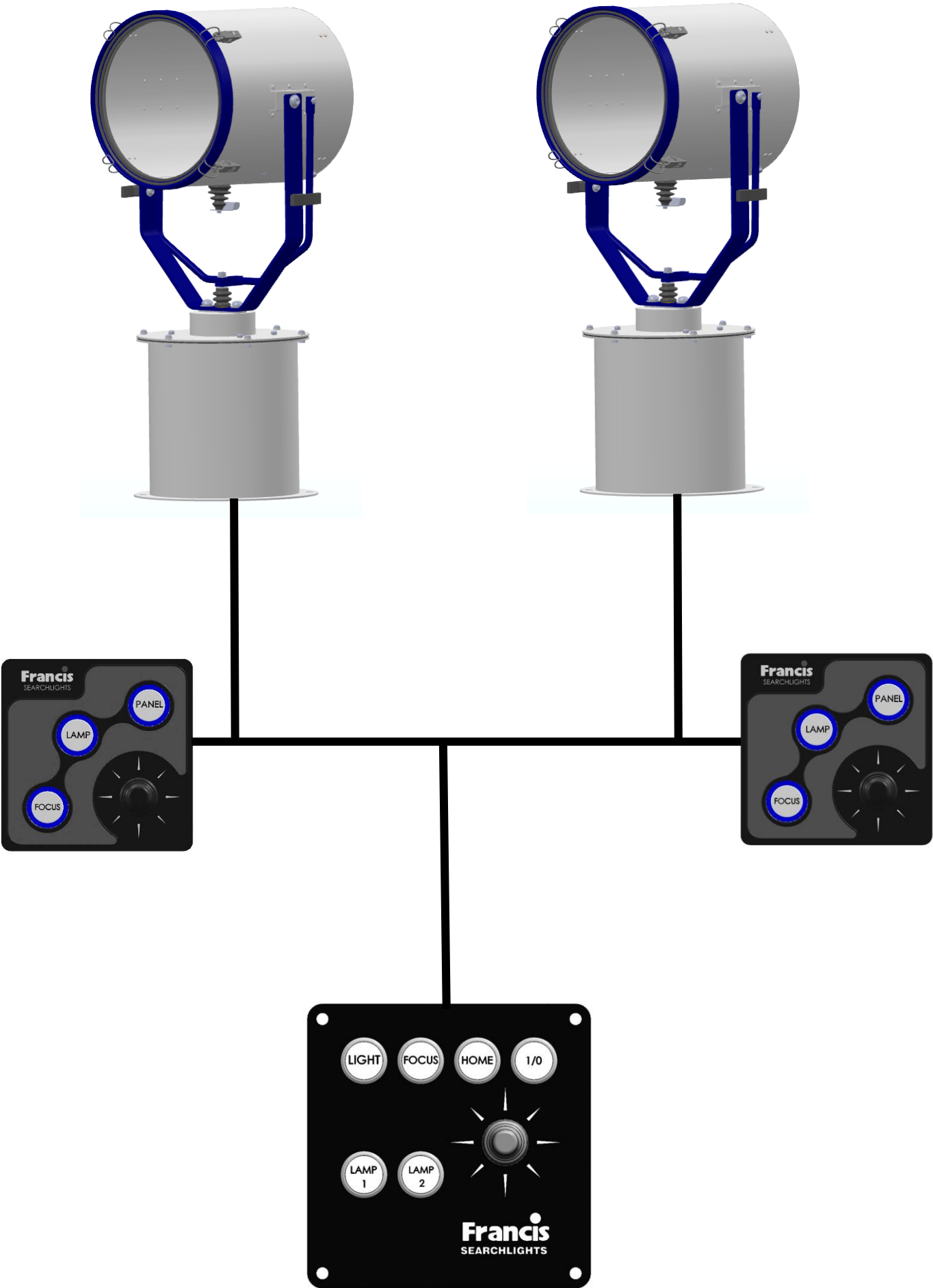
Every searchlight must have a unique address. The addresses should be sequential and should start from zero. If there were three searchlights in a system the addresses should be set to 0, 1 and 2.

Control panel – panel addresses use the same system being sequential and start from zero.

It is essential that all panels have a unique address with no duplication however note that searchlights and panels can be the same address. For example, on a system with two panels and two searchlights, the panel addresses will be 0 and 1 and the lamps addresses will be 0 and 1.

Control panel lamp addresses are defined by the system configuration. If two panels are used to control the same searchlight, they must still have individual panel addresses, but the lamp addresses can be set to the same address value as the searchlight which is to be controlled. Any number of panels can control the same searchlight. See drawing C27422 at the rear of this manual for the wiring for multiple control panels.

Multiple Searchlights, Control Panels and Master Control Panel



7 – Fault Finding

7.1 Problems at Installation

- If the searchlight completes the Self-Test, e.g., Pan left, Tilts down then returns to centre and the LEDs on the joystick panel are not illuminate, then please check the 4 data cables connections on the FBUS connector located on the back of the control panel assembly, as these data cables could be swapped around, you can check the voltages on the 4 connections, you should get as shown below.
 - 0 & + = 2.2v DC
 - 0 & - = 2.2v DC
 - 24 & 0 = 18-24v DC
- If the searchlight completes the Self-Test, e.g., Pan left, Tilts down then returns to centre and the LEDs on the joystick panel are illuminated, but you are unable to control the searchlight via the control panel, then please check the data + & - connections on the FBUS connector located on the back of the control panel assembly, as these data cables could be swapped around.
- If you have more than 1 searchlight in the installation and 2 or more searchlights are moving at the same time in the same direction, then please check the dip switch settings on the speed controller PCB, see **Setting Searchlight Address Value**.

Failure of Lamp to light

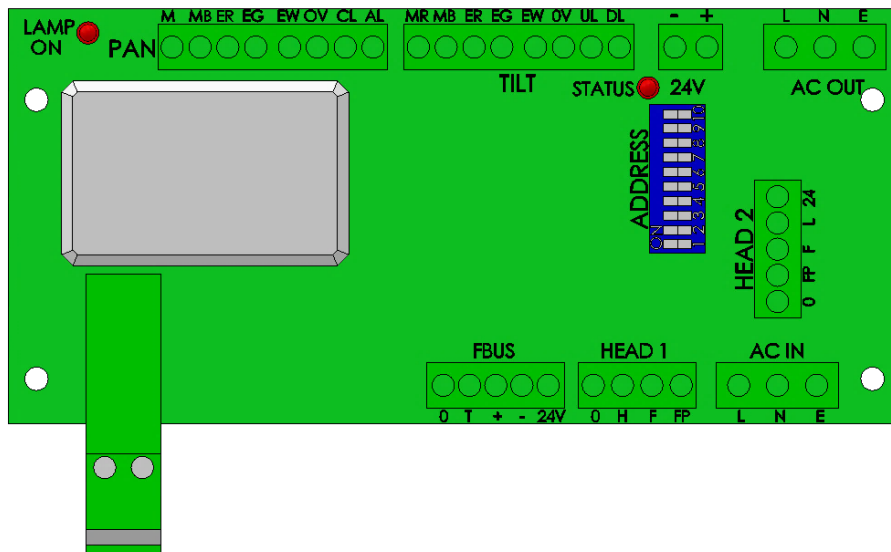
- Firstly, check supply at lamp holder connecting block (within searchlight barrel). If supply is present, disconnect unit from power supply before removing the lamp. If noticeable damage to filament is present, the lamp will have failed. The lamp can also be checked for continuity using a multi-meter. Replace lamp ensuring all precautions and instructions previously outlined in this manual are adhered to.

7.2 - Problems After Installation

Please note, if the searchlight does not complete the self-test, you will not be able to operate the searchlight in any direction or switch the lamp on. Please refer to section **7.3 Obtaining Fault Status** below, to confirm the fault.

Once you have confirmed the fault via the control panel, please contact Francis Searchlights for ordering the required parts, sales@francis.co.uk

If the control panel is not communicating with the searchlight and none of the LED's on the control panel are lighting up, then you will need to access the speed controller PCB inside the gearbox (see drawing C29488), to access the speed controller PCB you will need to remove the 6 off M6 screws that hold the motor top to the gearbox housing and then lift the searchlight up out of the gearbox housing, taking care not to damage the assembly, the Status LED located near the top of the card (labelled "STATUS") on the speed controller PCB, shown below.



During faults normal status LED operation is overridden. The status LED will flash red several times with the number of flashes corresponding to the specific fault. If there are multiple faults the LED will flash accordingly with a gap between each fault flash sequence. Fault details are provided on the next page, with the number of flashes indicated on the left.

The Status LED has several functions as detailed below.

Software Version

When power is applied to the speed control card the status LED will flash green. The number of flashes corresponds to the software version.

FBUS Normal operation

When the system is operating from FBUS the status LED will illuminate static green. When a valid FBUS data signal is received the LED will switch off momentarily to indicate data reception. If data is continuous the LED will flash green slowly.

If the Status LED does not light up, then please check the 24v DC supply from the PSU within the gearbox, as shown on drawing C29488 Item 6, if there is no output from the PSU then this will need to be replaced.

7.3 - Obtaining Fault Status

Fault codes can be accessed, with the control panel switched off, press the PANEL button and keeping the PANEL button pressed for 10 seconds. Fault codes are indicated by the PANEL button flashing several times related to the fault. Fault codes are detailed below. If more than one fault is present the PANEL button will indicate them in sequence.

1. Pan Limit. – Either of the pan limit switches operated. Note that this may not actually be a fault. The LED will flash when a limit switch is operated under normal circumstances i.e., the lamp is at the limit of travel. This will also indicate when a variable limit is reached.
2. Tilt Limit. – Either of the tilt limit switches operated. Note that this may not actually be a fault. The LED will flash when a limit switch is operated under normal circumstances i.e., the lamp is at the limit of travel. This will also indicate when a variable limit is reached.
3. Pan motor over current. – The pan motor is taking excessive current. The motor will be disabled for a period when this occurs. Fault indication will remain until power is removed or the fault is corrected.
4. Tilt motor over current. – The tilt motor is taking excessive current. The motor will be disabled for a period when this occurs. Fault indication will remain until power is removed or the fault is corrected.
5. Focus motor over current. – The focus motor is taking excessive current. The motor will be disabled for a period when this occurs. Fault indication will remain until power is removed or the fault is corrected.
6. FBUS interface over current. – The speed control card supplies 24VDC to the remote-control panels. This fault indicates the 24VDC output is taking excessive current. The FBUS supply output will switch off. To restore this output, remove the supply from the speed control card for a period.
7. Anti-condensation heater output over current. – The 24VDC anti condensation heater output is taking excessive current. The heater output will switch off. To restore this output, remove the supply from the speed control card for a period.
8. Limit Switch Error. Some lamp types do not use all or some limit switches. If an invalid limit switch input is detected it is probable the speed control card is set to the wrong product or there is a wiring error.
9. Datum Error. The start-up datum system has not completed correctly.
10. Product type not set or corrupt. The product type has not been set, has been set incorrectly or is corrupt.
11. Supply voltage out of tolerance. The 24V supply is outside the range 18-30V.

8 - Maintenance and Servicing

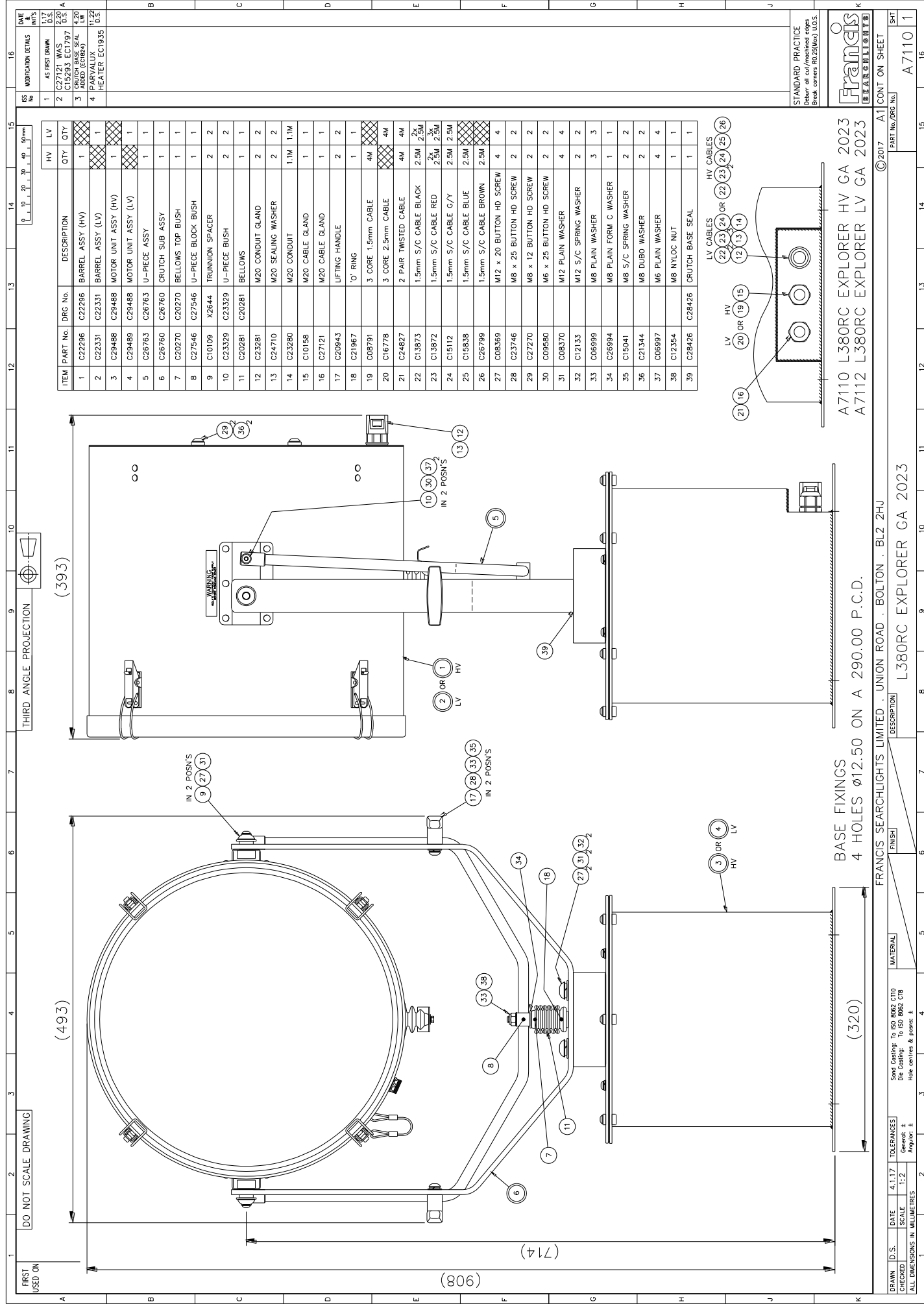
To prolong the service life and performance of your searchlight, the following maintenance guidelines are recommended:

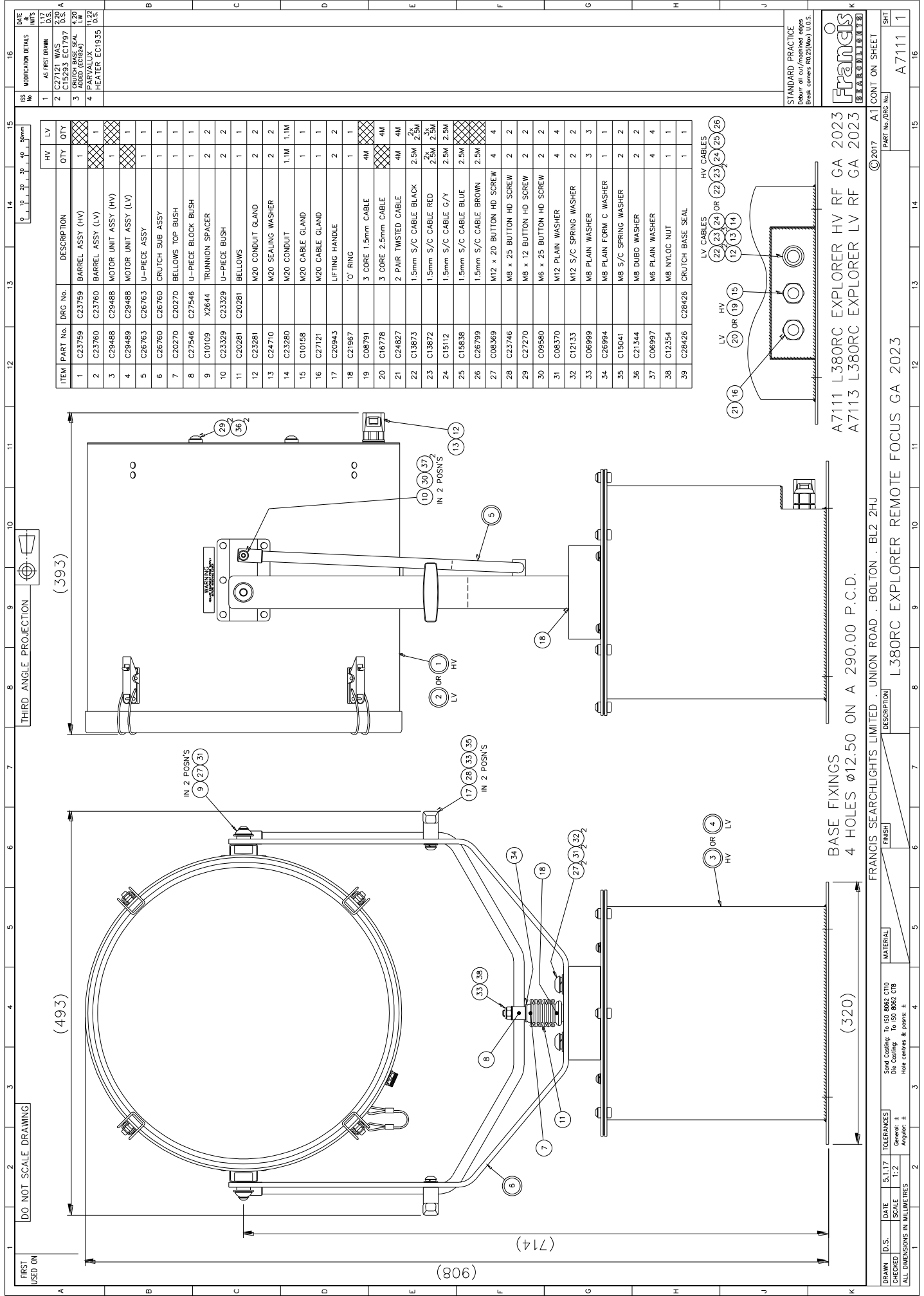
- Maintenance checks should be conducted before every voyage or at least every three months.
- Before checking, disconnect the equipment from the supply.
- Visually inspect the condition of the equipment.
- Any major or minor structural damage should be rectified immediately to reduce sympathetic wear.
- After inspection it may be necessary to clean the inside of the searchlight. The following procedure should be adhered to:
 - Remove the front bezel.
 - Clean the front glass inside and out using a proprietary glass cleaner.
 - Clean the reflector if required.
 - Ensure that the lamp holder is free from corrosion or other damage.
- It is advisable to check all seals and gaskets for signs of degradation. Renew if necessary.
- The searchlight is fitted with a breather unit. This ensures a steady airflow to prevent any vacuum forming within the barrel.
- Upon completing all maintenance requirements, the searchlight should be tested for full working order (approximately 20 minutes).

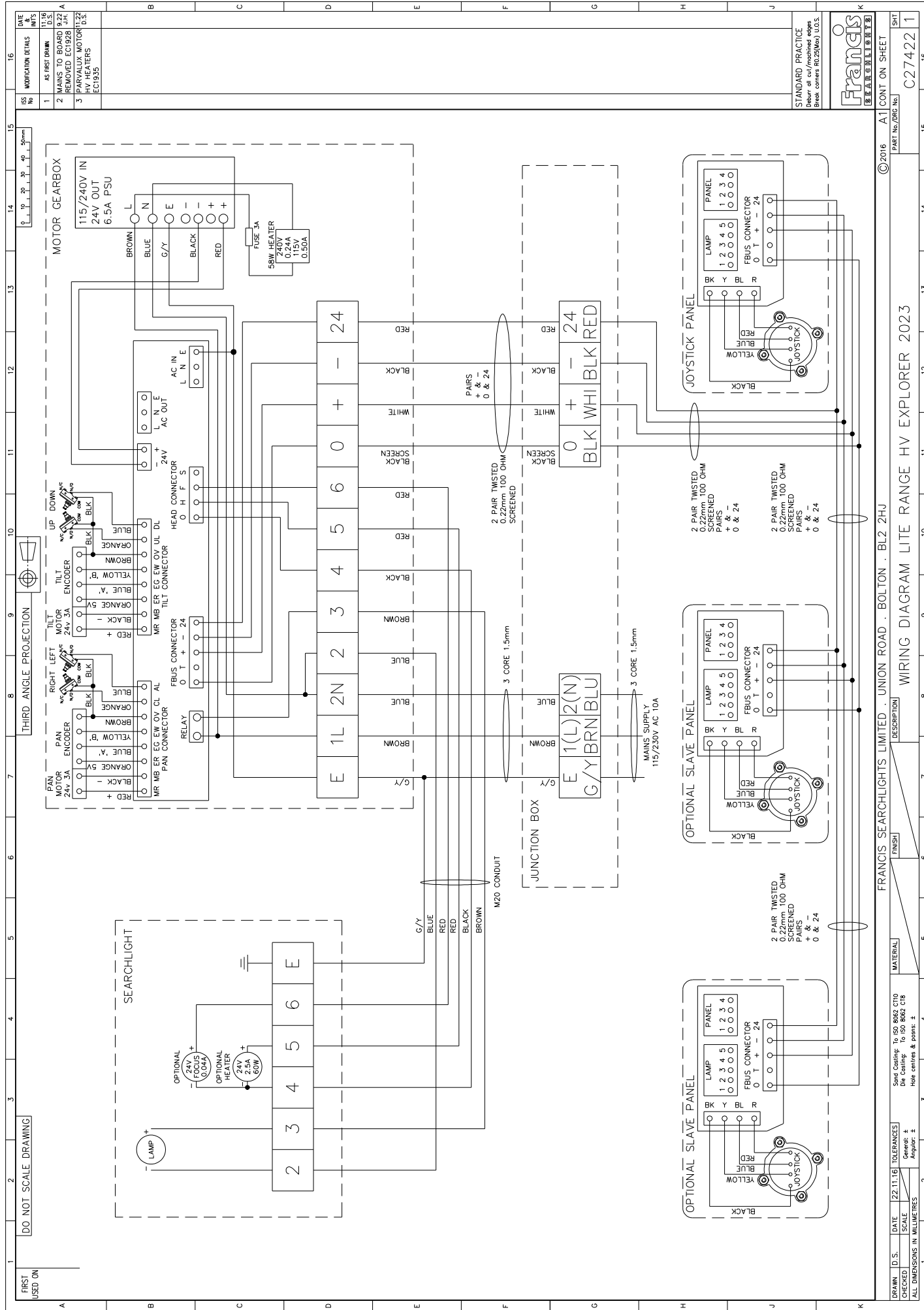
If in any doubt as to the correct servicing procedures to adopt, please contact your distributor/agent or Francis who will be able to advise the best course of action for your product.

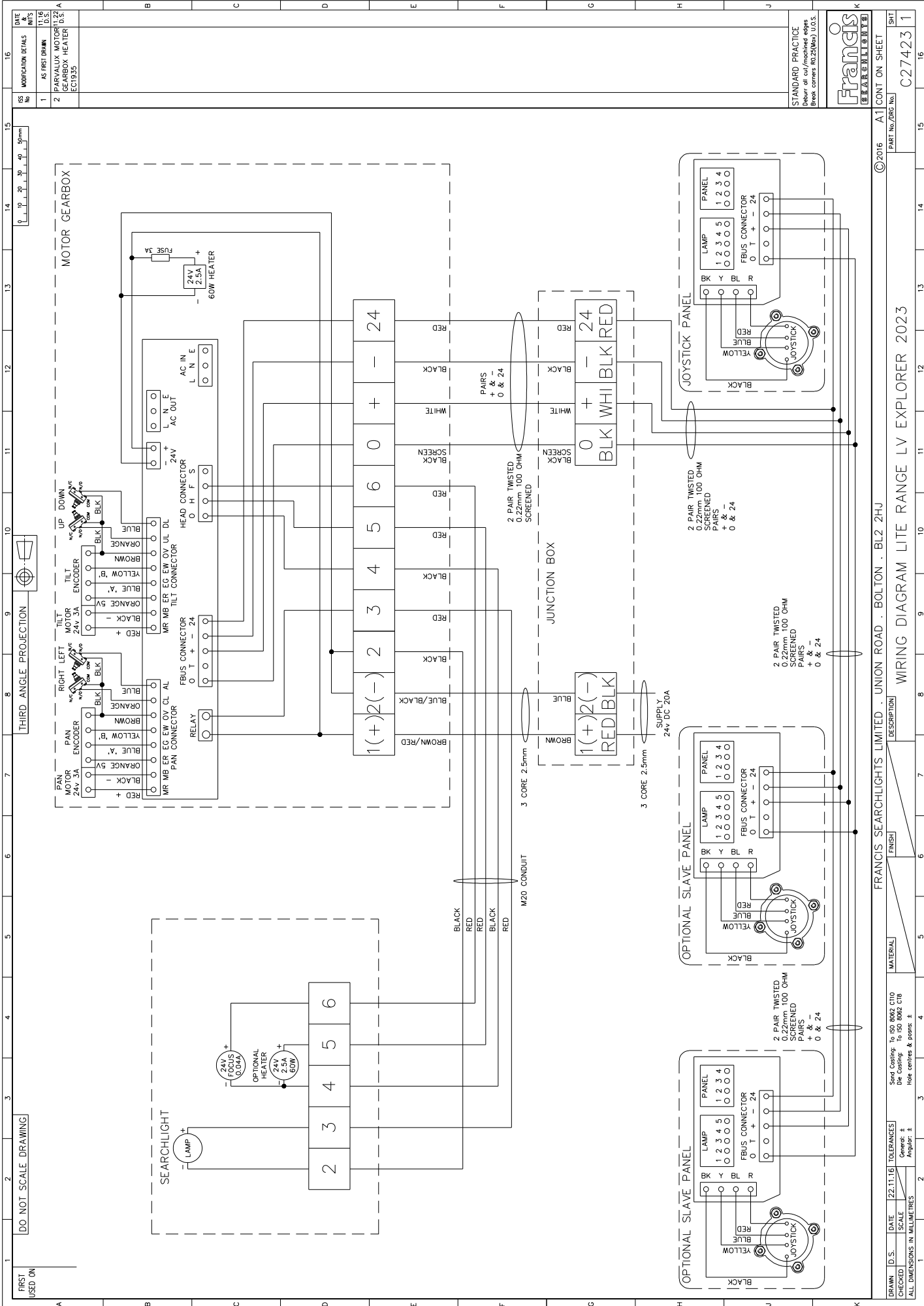
9 - Wiring Diagram & General Assembly

| Drawing No: | Description |
|---------------|---|
| A7110 / A7112 | L380RC Explorer General Assembly |
| A7111 / A7113 | L380RC Explorer Remote Focus General Assembly |
| C27422 | Wiring diagram 115/240v. |
| C27423 | Wiring diagram 24v. |
| C27313 | Joystick Panel Assembly Manual Focus |
| C27312 | Joystick Panel Assembly Remote Focus |
| C28912 | Junction Box Assembly 115/240v |
| C28914 | Junction Box Assembly 24v |
| C22296 | Barrel Assembly 115/240v |
| C23759 | Barrel Assembly Remote Focus 115/240v |
| C22331 | Barrel Assembly 24v |
| C23760 | Barrel Assembly Remote Focus 24v |
| C29488 | Gearbox Assembly |









STANDARD PRACTICE
Debur all cut/machined edges
Break corners R0.25(Min) U.D.S.

Francis
SEARCHLIGHTS LIMITED

© 2016 A1 CONT ON SHEET
PART No. 2082 N6

SHT
C27423 1

WIRING DIAGRAM LITE RANGE LV EXPLORER 2023

FRANCIS SEARCHLIGHTS LIMITED · UNION ROAD · BOLTON · BL2 2HJ

| DRAWN | D.S. | DATE | 22.11.16 | TOLERANCES |
|-------------------------------|-------|------|-----------|------------|
| CHECKED | SCALE | 24:1 | General ± | Angular ± |
| ALL DIMENSIONS IN MILLIMETRES | | | | |

Spwd Castings To ISO 8062 C110
Die Castings To ISO 8062 C18
Hole centres & points ±

MATERIAL

FINISH

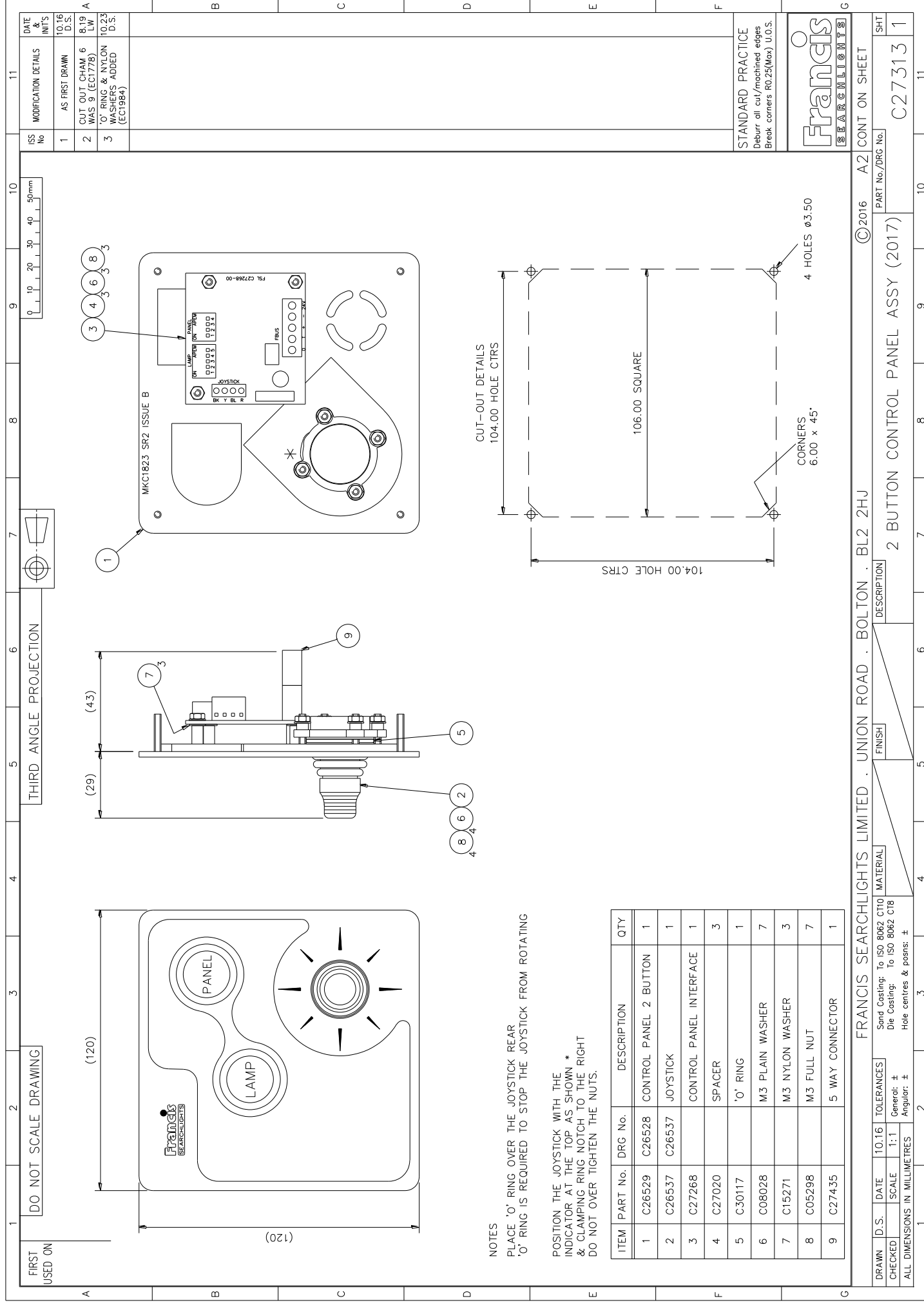
DESCRIPTION

FRANCIS SEARCHLIGHTS LIMITED · UNION ROAD · BOLTON · BL2 2HJ

WIRING DIAGRAM LITE RANGE LV EXPLORER 2023

© 2016 A1 CONT ON SHEET
PART No. 2082 N6

SHT
C27423 1



11

10

9

8

7

6

5

4

3

2

1

DO NOT SCALE DRAWING

THIRD ANGLE PROJECTION

0 10 20 30 40 50mm

DATE & INIT'S

MODIFICATION DETAILS

ISS No

1

2

3

AS FIRST DRAWN

CUT OUT CHAM WAS 9 (EC1775)

O RING & NYLON WASHERS ADDED (EC1984)

8.19 D.S.

10.23 D.S.

10.16 D.S.

STANDARD PRACTICE

Deburr all cut/machined edges

Break corners R0.25(Max) U.O.S.

Francis

SEARCHLIGHTS

CONT ON SHEET

©2016

A2

PART No./DRG No.

SHT

1

C27312

10

9

8

7

6

5

4

3

2

1

ALL DIMENSIONS IN MILLIMETRES

TOLERANCES

10.16

DATE

D.S.

CHECKED

Francis

SEARCHLIGHTS

MKC1823 SR2 ISSUE B

1

3

4

6

8

3

JOYSTICK

ON

OFF

LAMP

PANEL

FRUS

104.00 HOLE CTRS

106.00 SQUARE

104.00 HOLE CTRS

4 HOLES ø3.50

CORNERS 6.00 x 45°

CUT-OUT DETAILS

1

2

3

4

5

6

7

8

9

120

120

10

20

30

40

50

60

70

80

90

100

110

120

130

140

150

160

170

180

190

200

210

220

230

240

250

260

270

280

290

300

310

320

330

340

350

360

370

380

390

400

410

420

430

440

450

460

470

480

490

500

510

520

530

540

550

560

570

580

590

600

610

620

630

640

650

660

670

680

690

700

710

720

730

740

750

760

770

780

790

800

810

820

830

840

850

860

870

880

890

900

910

920

930

940

950

960

970

980

990

1000

1010

1020

1030

1040

1050

1060

1070

1080

1090

1100

1110

1120

1130

1140

1150

1160

1170

1180

1190

1200

1210

1220

1230

1240

1250

1260

1270

1280

1290

1300

1310

1320

1330

1340

1350

1360

1370

1380

1390

1400

1410

1420

1430

1440

1450

1460

1470

1480

1490

1500

1510

1520

1530

1540

1550

1560

1570

1580

1590

1600

1610

1620

1630

1640

1650

1660

1670

1680

1690

1700

1710

1720

1730

1740

1750

1760

1770

1780

1790

1800

1810

1820

1830

1840

1850

1860

1870

1880

1890

1900

1910

1920

1930

1940

1950

1960

1970

1980

1990

2000

2010

2020

2030

2040

2050

2060

2070

2080

2090

2100

2110

2120

2130

2140

2150

2160

2170

2180

2190

2200

2210

2220

2230

2240

2250

2260

2270

2280

2290

2300

2310

2320

2330

2340

2350

2360

2370

2380

2390

2400

2410

2420

2430

2440

2450

2460

2470

2480

2490

2500

2510

2520

2530

2540

2550

2560

2570

2580

2590

2600

2610

2620

2630

2640

2650

2660

2670

2680

2690

2700

2710

2720

2730

2740

2750

2760

2770

2780

2790

2800

2810

2820

2830

2840

2850

2860

2870

2880

2890

2900

2910

2920

2930

2940

2950

2960

2970

2980

2990

3000

3010

3020

3030

3040

3050

3060

3070

3080

3090

3100

3110

3120

3130

3140

3150

3160

3170

3180

3190

3200

3210

3220

3230

3240

3250

3260

3270

3280

3290

3300

3310

3320

3330

3340

3350

3360

3370

3380

3390

3400

3410

3420

3430

3440

3450

3460

3470

3480

3490

3500

3510

3520

3530

3540

3550

3560

3570

3580

3590

3600

3610

3620

3630

3640

3650

3660

3670

3680

3690

3700

3710

3720

3730

3740

3750

3760

3770

3780

3790

3800

3810

3820

3830

3840

3850

Technical drawing of a Junction Box Assy (HV) showing three views: Top View, Front View, and Side View. The drawing includes dimensions and callouts for various components.

Top View: Shows the top of the junction box. Dimensions include a width of 180.00 and a height of 163.50. Callouts 1 through 9 identify specific components. A note indicates "IN 2 POSN'S IN 2 POSN'S" for callouts 4 and 5.

Front View: Shows the front of the junction box. Dimensions include a width of 180.00 and a height of 163.50. Callouts 1 through 9 identify specific components.

Side View: Shows the side of the junction box. Dimensions include a width of 180.00 and a height of 163.50. Callouts 1 through 9 identify specific components.

Dimensions:

- Top View: 180.00 (width), 163.50 (height)
- Front View: 180.00 (width), 163.50 (height)
- Side View: 180.00 (width), 163.50 (height)

Callouts:

- 1: Junction Box Drilling
- 2: M20 Gland
- 3: M20 Gland
- 4: M3 x 8 Button HD Screw
- 5: Ø4 x 8 Pan HD Polymate Screw
- 6: M4 x 12 O/D Washer
- 7: M3 S/C Spring Washer
- 8: Junction Box Din Rail Assy
- 9: Chassis Plate Assy

Table:

| ITEM | PART No. | DRG. No. | DESCRIPTION | QTY |
|------|----------|----------|-------------------------------|-----|
| 1 | C23602 | C23602 | CHASSIS PLATE ASSY | 1 |
| 2 | C28911 | C28911 | JUNCTION BOX DIN RAIL ASSY | 1 |
| 3 | C26684 | C26684 | JUNCTION BOX DRILLING | 1 |
| 4 | C10158 | | M20 GLAND | 2 |
| 5 | C27121 | | M20 GLAND | 2 |
| 6 | C10207 | | M3 x 8 BUTTON HD SCREW | 2 |
| 7 | C23598 | | Ø4 x 8 PAN HD POLYIMATE SCREW | 4 |
| 8 | C20637 | | M4 x 12 O/D WASHER | 2 |
| 9 | C10747 | | M3 S/C SPRING WASHER | 2 |

Notes:

- DO NOT SCALE DRAWING
- THIRD ANGLE PROJECTION
- STANDARD PRACTICE: Debur all cut/machined edges. Break corners R0.2(Min) U.O.S.

Header:

FRANCIS SEARCHLIGHTS LIMITED · UNION ROAD · BOLTON · BL2 2HU

Footer:

DATE: 23.12.20
SCALE: 1:1
TOLERANCES: Spot Centering to ISO R0.2, 0.10
Die Centering to ISO R0.2, 0.10
Hole centres & posns: ±
Angles: ±

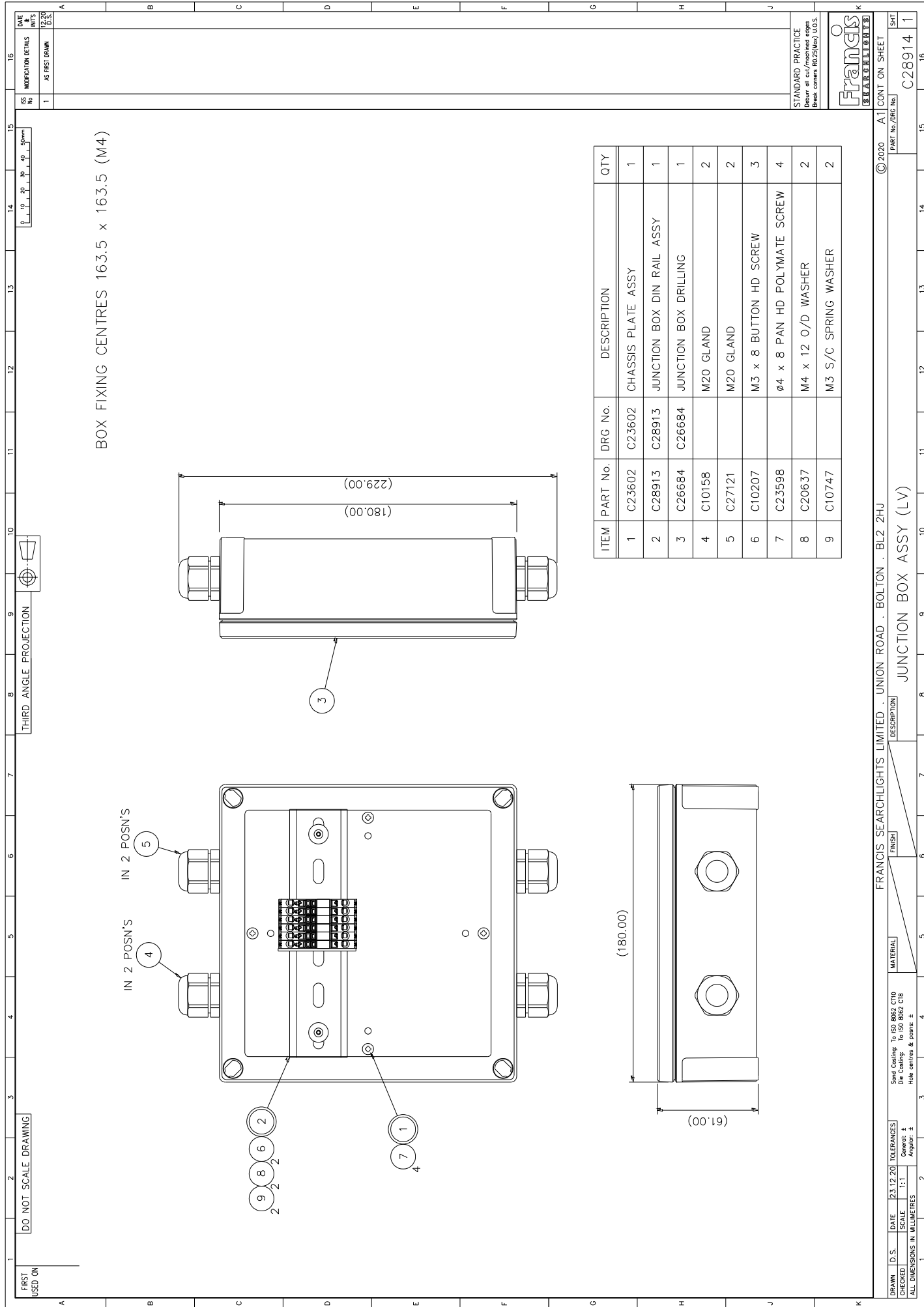
Revision Table:

| REV | DATE | DESCRIPTION |
|-----|----------|---------------|
| 1 | 23.12.20 | Initial Issue |

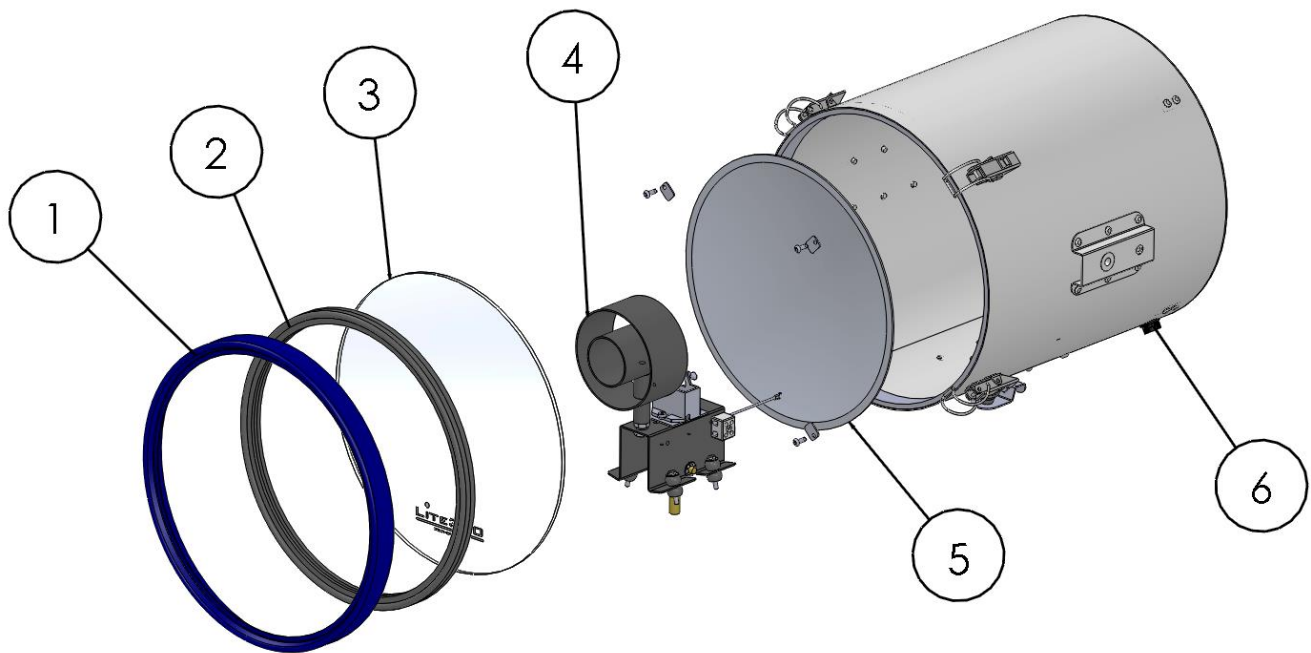
Part Information:

PART No./DRG No.: C28912 / 1

SWT: C28912 / 1



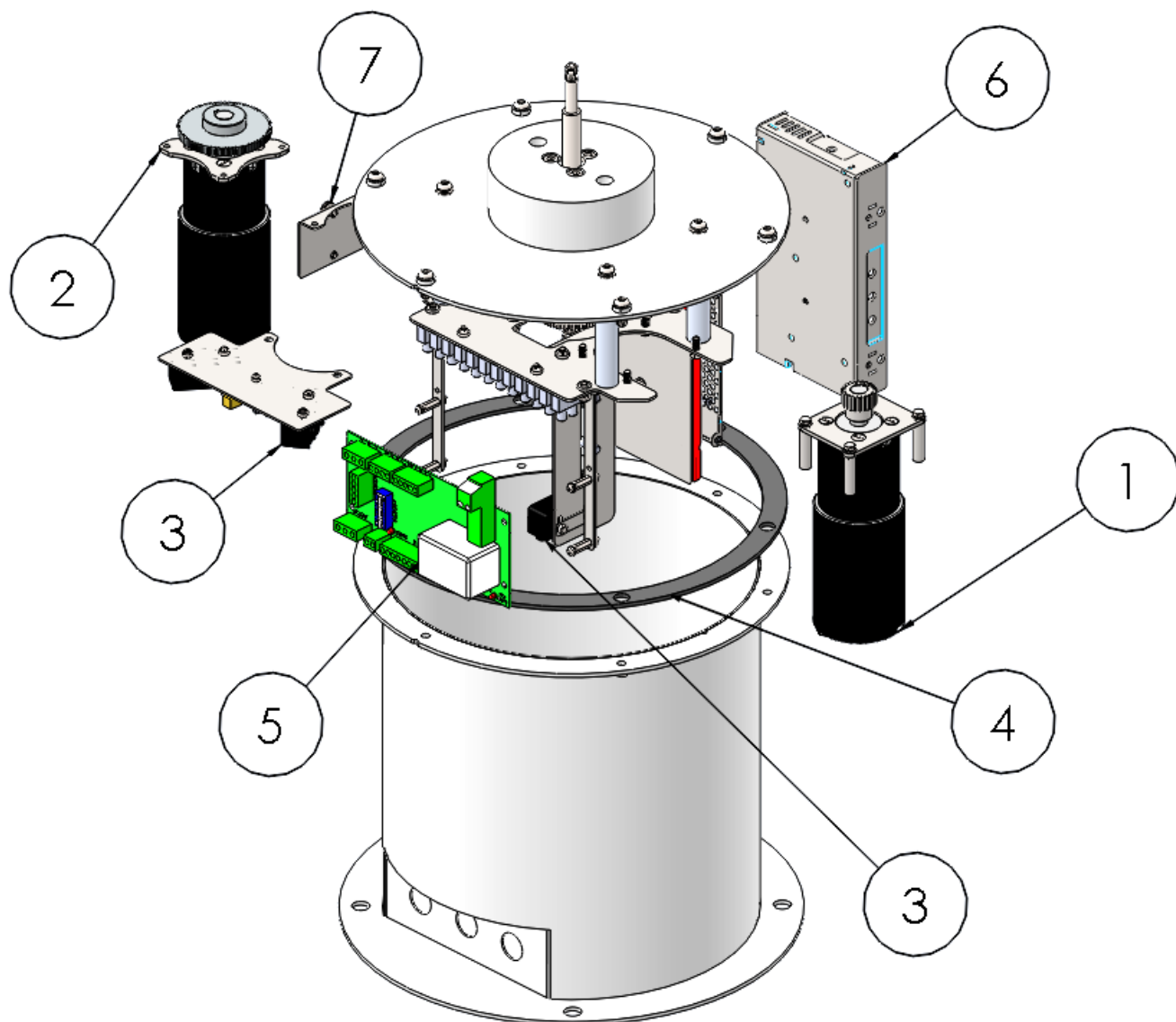
**C22296 115/240v Barrel Assembly, C23759 115/240v RF Barrel Assembly
C22331 24v Barrel Assembly, C23760 24v Remote Focus Barrel Assembly**



| Item Number | Part Number | Description | Quantity |
|-------------|-------------|----------------------------|----------|
| 1 | C22002-79 | Front Bezel | 1 |
| 2 | C22011-00 | Front Glass Gasket | 1 |
| 3 | C22305-00 | Front Glass | 1 |
| 4 | C22303-01 | Lamp holder Assembly HV | 1 |
| 4 | C22332-01 | Lamp holder Assembly LV | 1 |
| 4 | C17203-01 | Lamp holder Assembly RF HV | 1 |
| 4 | C20001-01 | Lamp holder Assembly RF LV | 1 |
| 5 | C22310-00 | Reflector | 1 |
| 6 | C22268-01 | Breather Assembly | 1 |

C29488 Gearbox Assembly 115/240v

C29489 Gearbox Assembly 24v



| Item Number | Part Number | Description | Quantity |
|-------------|-------------|-------------------------|----------|
| 1 | C29501-01 | Pan Motor Assembly | 1 |
| 2 | C29500-01 | Tilt Motor Assembly | 1 |
| 3 | C29275-00 | Micro-switch | 4 |
| 4 | C23234-00 | Pedestal Sealing Gasket | 1 |
| 5 | C29535-01 | Speed Controller PCB | 1 |
| 6 | C29162-00 | PSU | 1 |
| 7 | C23277-00 | Heater 115/240v | 1 |
| 7 | C23278-00 | Heater 24v | 1 |

10 - Spare Parts List

The following spare parts can be ordered directly from the manufacturer:

| Part Number | Description |
|-------------|-------------|
|-------------|-------------|

Searchlight Spares

| | |
|-----------|---|
| D9851 | 24v 250w 300HRS GX6.35 Tungsten Halogen Lamp |
| D4695 | 24v 250w 2000HRS GX6.35 Tungsten Halogen Lamp |
| D1809 | 115v 1000w 750HRS GX9.5 Tungsten Halogen Lamp |
| D6715 | 230v 1000w 750HRS GX9.5 Tungsten Halogen Lamp |
| D1813 | 230v 650w 750HRS GX9.5 Tungsten Halogen Lamp |
| C03022-00 | Lamp holder GX9.5 |
| C16878-00 | Lamp holder GX6.35 |
| C22002-79 | Front Bezel |
| C22305-00 | Front Glass |
| C22011-00 | Front Glass Gasket |
| C28025-01 | Focus Motor Assembly |
| C22310-00 | Reflector |
| C22268-01 | Breather Assembly |
| C16761-00 | Lamp holder AV Mount |
| C20281-00 | Bellows |

Motor Gearbox Spares

| | |
|-----------|-------------------------|
| C29501-01 | Pan Motor Assembly |
| C29500-01 | Tilt Motor Assembly |
| C29275-00 | Micro switch |
| C23234-00 | Pedestal Sealing Gasket |
| C29535-01 | Speed Controller PCB |
| C29162-00 | PSU |
| C23277-00 | Heater 115/240v |
| C23278-00 | Heater 24v |

Joystick Panel Spares

| | |
|-----------|-------------------------|
| C26537-01 | Joystick |
| C27268-00 | Joystick Controller PCB |

To prolong the life and performance of your product, we recommend that you only specify Francis Searchlights spare parts. This will ensure that any warranties on your equipment will not be invalidated.

When ordering spare parts please contact the Sales Department at Francis Searchlights Limited sales@francis.co.uk . Please always quote the searchlight model and serial number, which you can find within the front of the barrel head to the right, on the name plate. This will enable a fast response to your spares' requirements.